

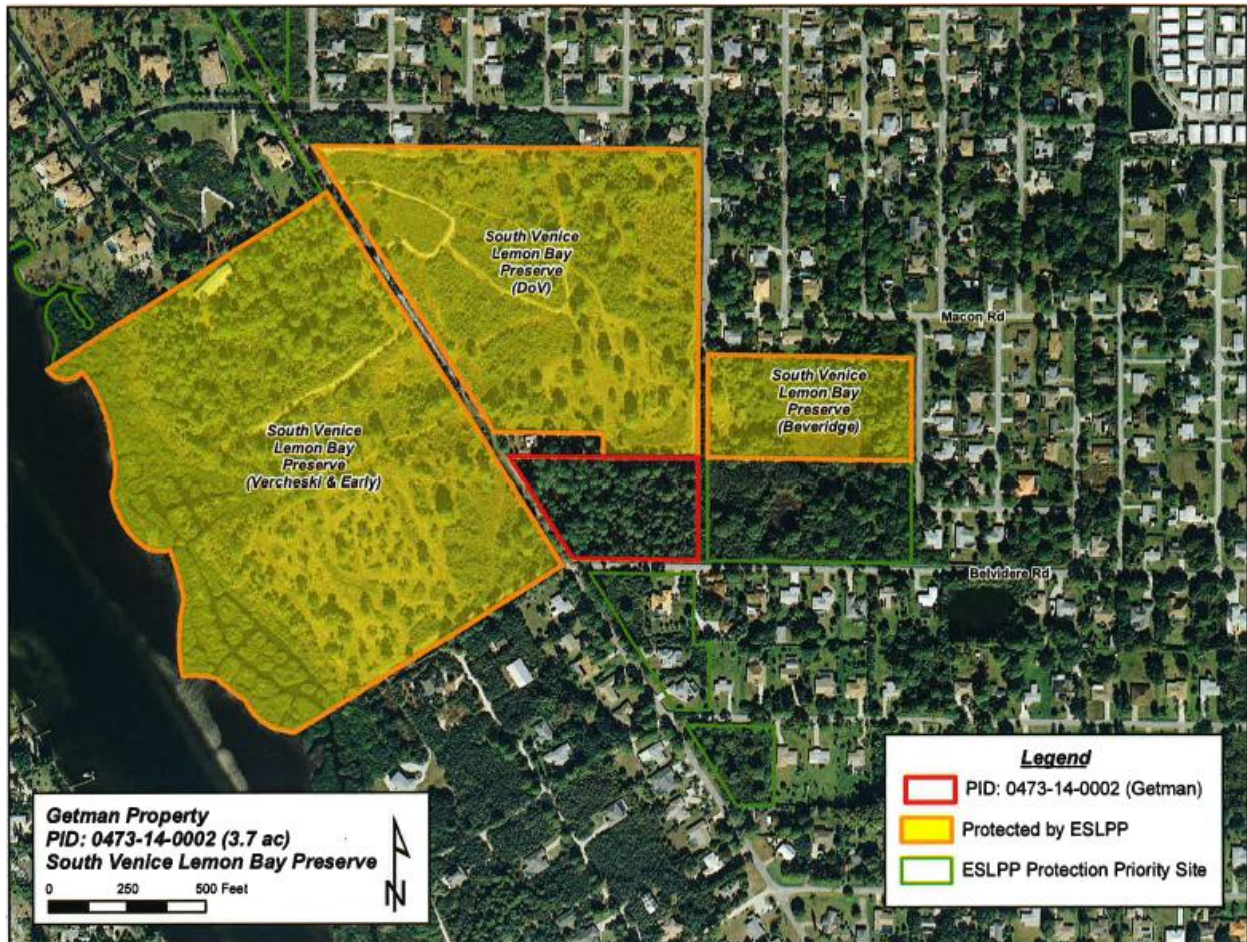
## Environmentally Sensitive Lands Protection Program Acquires Two Important Parcels

The Environmentally Sensitive Lands Protection Program (ESLPP) of Sarasota County is a voter-approved and taxpayer-funded program designed to acquire and protect natural lands. Priority sites within the county are ranked on environmental criteria including connectivity, water quality, habitat rarity, land quality and manageability. Acquired lands are being protected and managed. Some preserves will have public access for nature-based recreation.

Sarasota County's environmentally sensitive lands provide safe habitat for many threatened and native species including gopher tortoises, Florida scrub-jays, bobcats, eagles and migrant birds. Acquisition and protection of these lands now ensures that their environmentally sensitive nature and habitats will be there for future generations.

On Dec. 15, 2010, two parcels were acquired:

- **The Getman parcel** (3.77 acres) in the Environmentally Sensitive Lands Protection Program's South Venice Lemon Bay Preserve closed on December 15, 2010. (Map below.) This parcel connects previously acquired land, resulting in 61 contiguous acres of coastal and scrubby habitats. Estuarine birds, fish and invertebrates are found in the coastal waters, while gopher tortoises and other wildlife inhabit the preserve's upland areas.





- **The Decker parcel** (2.92 acres), a Neighborhood Parkland site providing adjacent acreage to the County-owned Snook Haven Park and Riverfront Restaurant, also closed on December 15, 2010. (Map below.) This property has a canopy of mature live oaks and frontage on the Myakka River. Existing improvements include a residence and a boat ramp. The parcel will expand this successful riverfront investment and enhance water access for recreation.

