



# *Lemon Bay League Inc.*

The Lemon Bay League is a not-for-profit corporation committed to building partnerships for a common Community Vision and coordination of existing and future planning efforts within the region defined by the Lemon Bay watershed region.

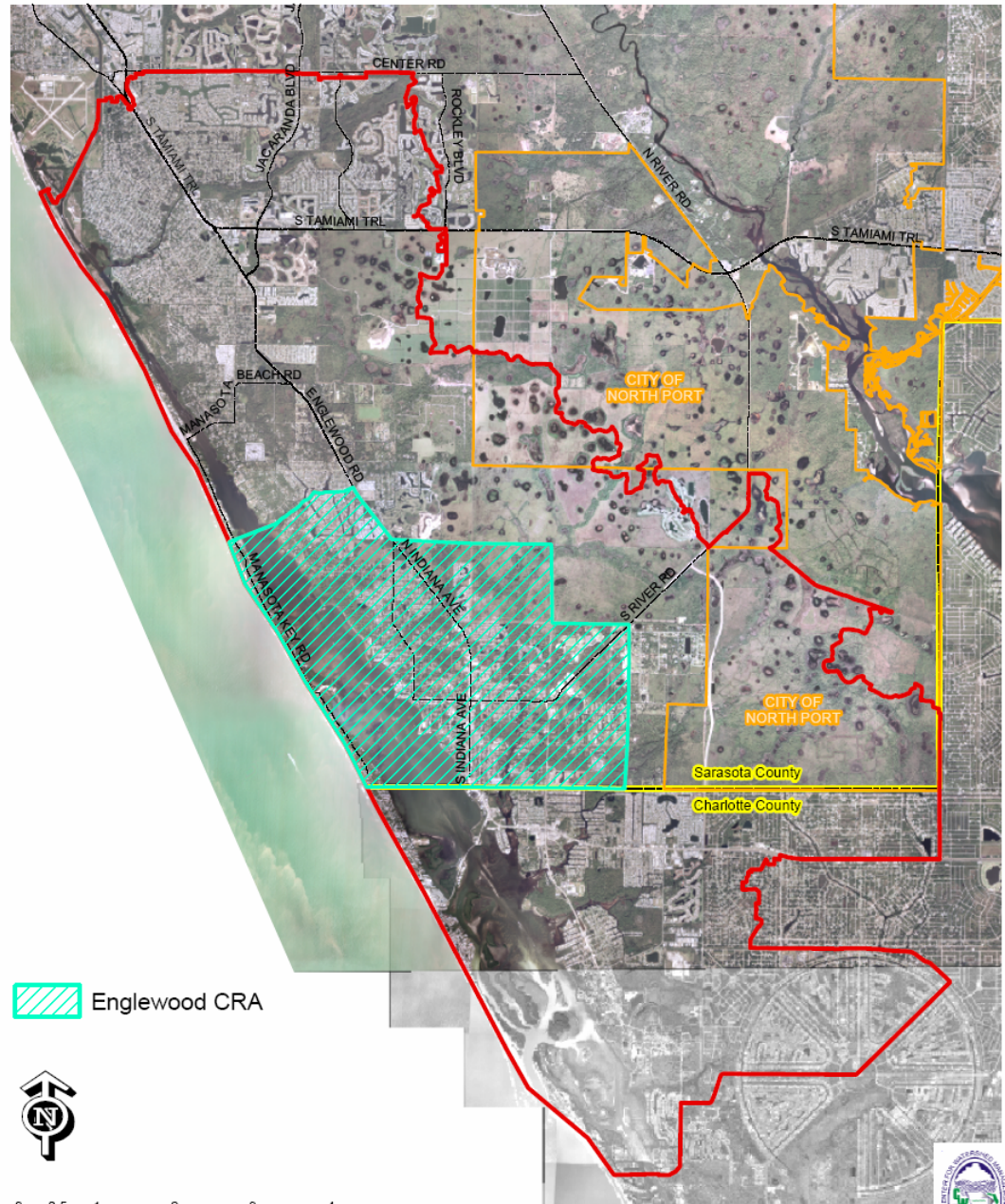
---

## **Lemon Bay Watershed Community Goal :**

**Goal:** To develop congruency in multiple plans, jurisdictions, projects and constituencies by developing a common Community Vision and by coordinating existing and future planning efforts within the Lemon Bay Watershed.

# THE LEMON BAY WATERSHED

## Proposed Lemon Bay Watershed Master Plan Study Boundary



# Lemon Bay Interagency Comprehensive Watershed Management Plan



Community Based Watershed Management

2004



# COMMUNITY WATERSHED GOALS

1. The planning and provisions for Water Supply and Wastewater in the Lemon Bay watershed region should continue to be coordinated and interconnected.
2. Future development should be controlled from filling or occurring in the 100-year floodplain.
3. Excess stormwater should be recycled to augment irrigation demands and to provide other beneficial uses.
4. The quantity and quality of freshwater flows to Lemon Bay should be addressed to restore historical seagrass and oyster beds.
5. Restore watershed hydrology by implementing watershed restoration projects.
6. Quantify the “cost” difference of business as usual and improved watershed management (including land use) practices.
7. Provide financial and tax incentives to citizens and the private sector for personal responsibility.
8. Create an Environmental Learning Center to provide for continued community engagement of local natural systems and watershed management awareness.
9. Reverse public apathy towards water conservation and address deed restrictions requiring water intensive landscaping.
10. Move towards better wastewater treatment practices in areas with older septic tank systems.
11. Provide for 100% reuse of reclaimed water.
12. Include recommendations from the Lemon Bay public workshop sponsored by the Charlotte Harbor National Estuary Program on March 27, 2004.
13. Include recommendations from the *Nonpoint Source Model Development and Basin Management Strategies for Lemon Bay – Final Report* prepared by Environmental Research and Design, Inc. for the Southwest Florida Water Management District.

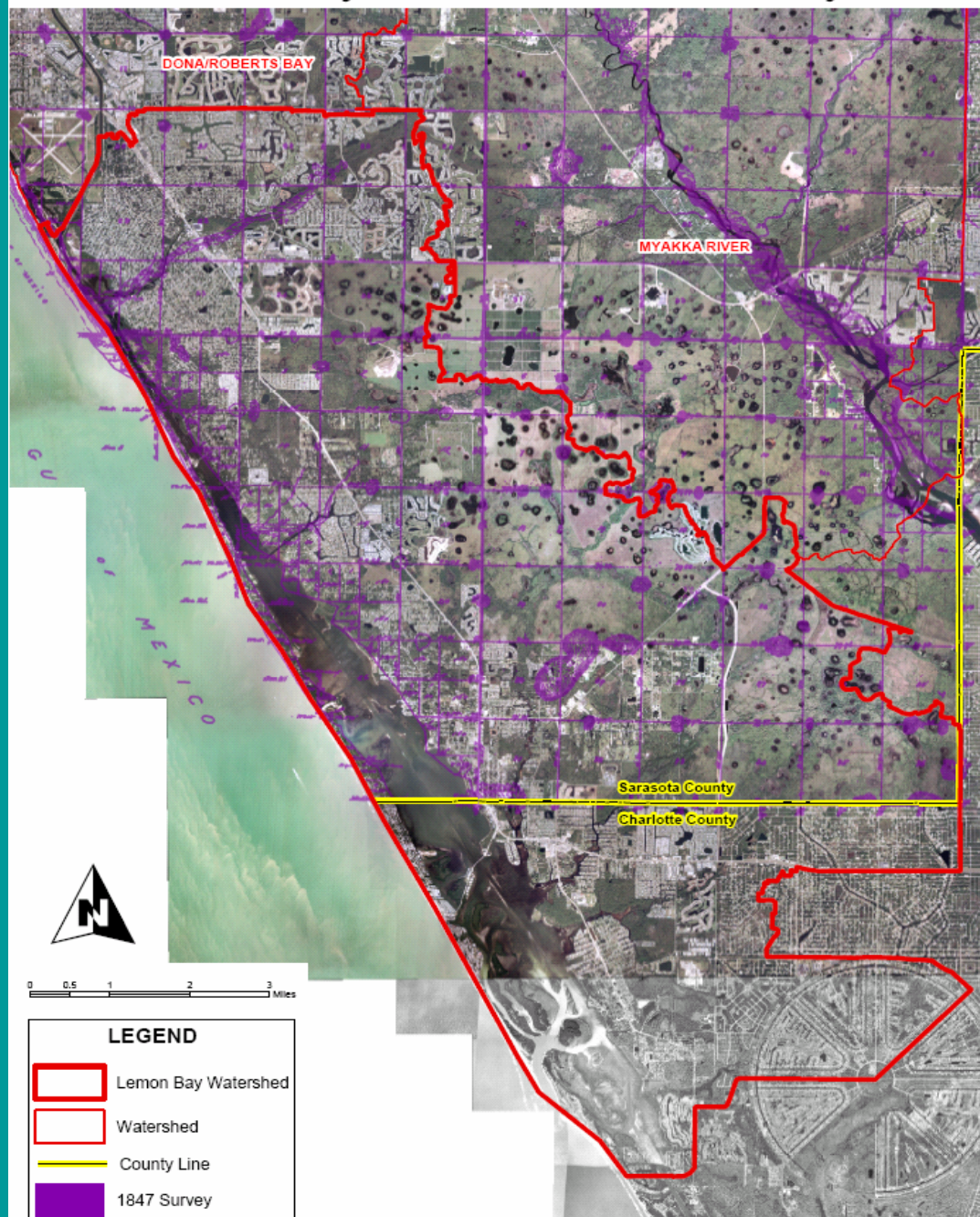
***“Everything is what it is  
because it got that way.”***

---

**Sir D’Arcy Thompson, 1917**

# 1847 SURVEY

## Lemon Bay Watershed - 1847 Survey



Map was created using ArcMap 6.3 by K. Dotson  
of Sarasota County Water Resources on May 26, 2004.  
Aerial photography was flown in November, 2002.



# TODAY'S DRAINAGE NETWORK

## Lemon Bay Watershed - Existing Drainage System

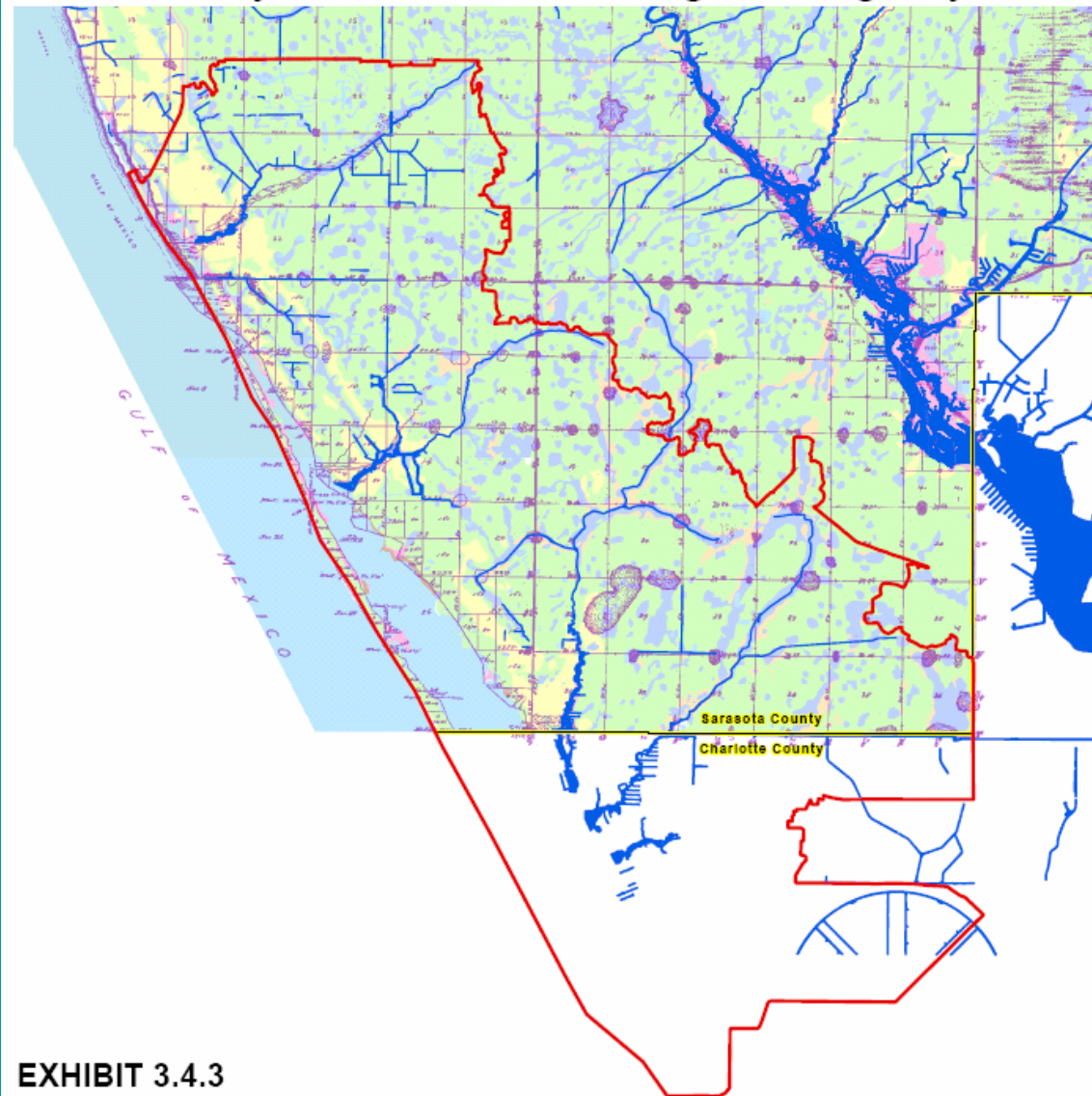


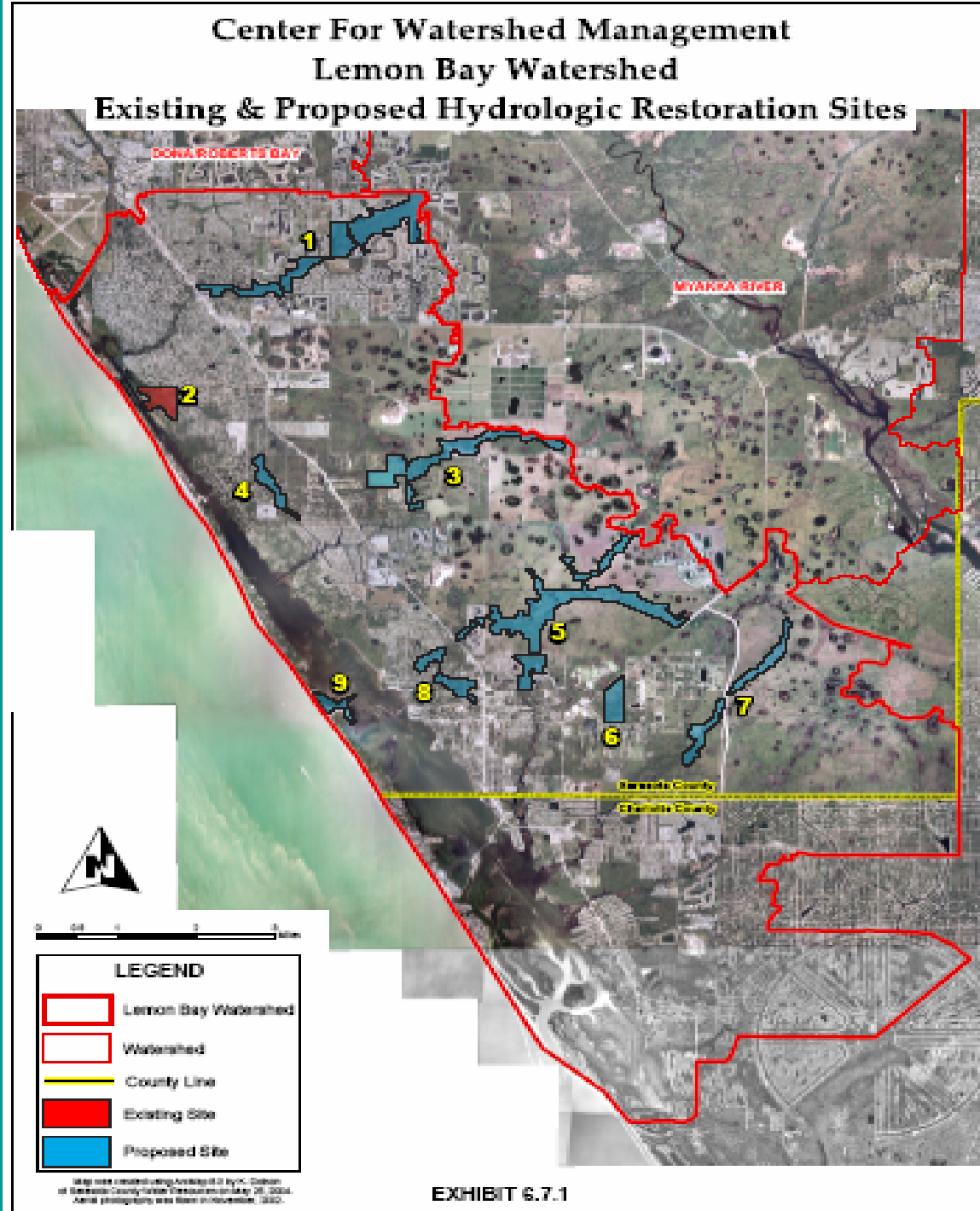
EXHIBIT 3.4.3

### Legend

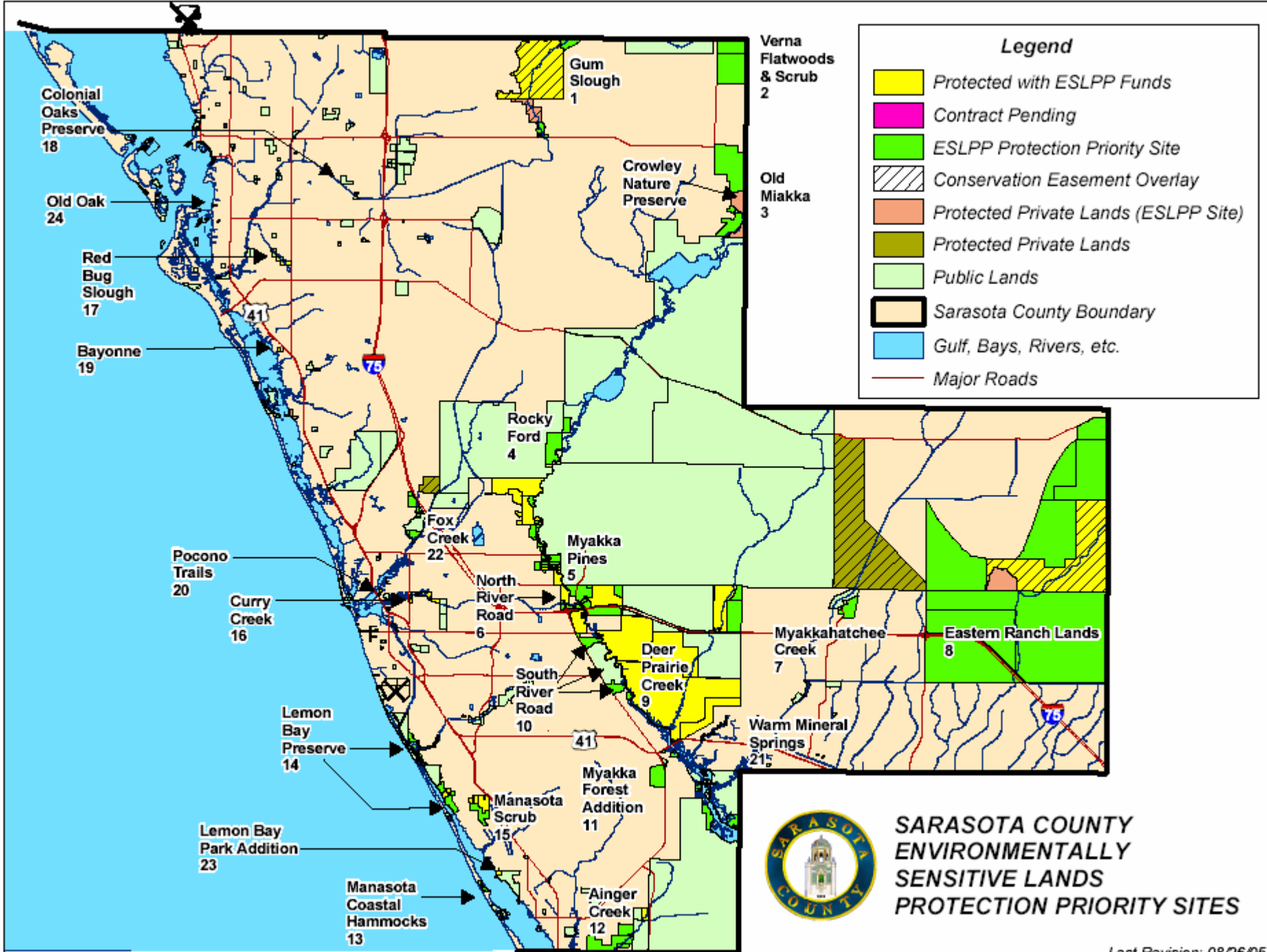
Watershed	Pine Flatwoods	Freshwater Wetlands
County Line	Hammocks	Tidal Marsh Wetlands
1847 Survey	Scrub Flatwoods	Spoils
Canal	Water	



# WATERSHED RESTORATION SITES









# LEMON BAY LEAGUE, FLORIDA HOUSE INSTITUTE, and GULF COAST COMMUNITY FOUNDATION OF VENICE

## PARTNER TO HELP PRESERVE BASS LAB RECORDS

# Bass Biological Laboratory, Englewood – 1931 to 1941





Species	Date	Locality and Habitat	Determined by
P. pectinatus	1935	Key West	H.W.N.
(Sawfish)	4/10	Lemon Bay	L.G.

Phylum Chordata Class Elasmobranchii Order Batoidei  
Genus Pristis Family Pristidae

Name	Date	Locality	Determined by
------	------	----------	---------------

## MOLLUSCA--GASTROPODA (cont'd)

Melongena pugilina		Striped and straited with brown	H.H.P.
Haminea solitaria	2-3/35	Common in north end of Lemon Bay and Oyster Cr.	D.J.Z. H.H.P.
Fasciolaria tulipa		Giant brown chnch. Urn-shaped egg cases.	H.H.P.
Fasciolaria gigantea			D.J.Z.
Acteon punctostriatus	3/35	Lemon Bay--not common	H.H.P.
Murex pomum		Gulf beach	

\*\*\*\*\*

\*\*\* \*\*

## --PELECYPODA--

Arca ponderosa			H.H.P.
Arca noae			H.H.P.
Avicula atlantica			H.H.P.
Spondylus Americanus			H.H.P.
Pinna muricata		Lemon Bay and Gulf shore--common	D.J.Z. H.H.P.
Pinna rudis			
Ostrea virginica		Lemon Bay--common on bars.	D.J.Z.
Ostrea frons		Commonest in Bay, especially in shallow water and on mangrove roots.	H.H.P. H.H.P. H.H.P.
Pecten dislocatus			
Pecten nodosum			
Pecten irradians		Common on grass flats--Lemon Bay	D.J.Z.
Pecten islandicus		Gulf shores--not common	D.J.Z.
Anomia glabrums			H.H.P.
Mytilus hamatus			H.H.P.
Cardium magnum			H.H.P.
Venus mercenaria			H.H.P.
Venus m. Mortoni			H.H.P.
Venus cancellata			H.H.P.
Cytherea convexa			H.H.P.
Cytherea (Callista) maculata			H.H.P.
Dosinia discus			H.H.P.
Donax variabilis		Gulf beach	H.H.P.
Donax carinata			H.H.P.
Tellina radiata			H.H.P.
Ensis directus	5/8/35	Thornton's Inlet	H.H.P.
Pholas costata		Common in certain mud flats at southern end of Lemon Bay. Also Gulf	D.J.Z.

\*\*\*\*\*

\*\*\* \*\*

# How do we create a common understanding/vision for the future?

**EDUCATION**

**ECONOMIC DEVELOPMENT**

**NEIGHBORHOOD PRESERVATION**

**TRANSPORTATION**

**HISTORIC PRESERVATION**

**SMART GROWTH**

**ENERGY**

**HEALTH**

**PUBLIC SAFETY**

**TECHNOLOGY**

**AGRICULTURE**

**AFFORDABLE HOUSING**

**ENVIRONMENT**



# ORGANIZING AROUND SYSTEM LAYERS

## A Taxonomy for Communities - The Four System Layers

### **SOCIAL**

Governance and Decision-making  
Education  
Health  
Culture  
Worship  
Family and Informal Association

### **ECONOMIC**

Business  
Markets  
Economies  
Currencies  
Technological Innovations  
Extractive and Value-added Processes

### **BUILT**

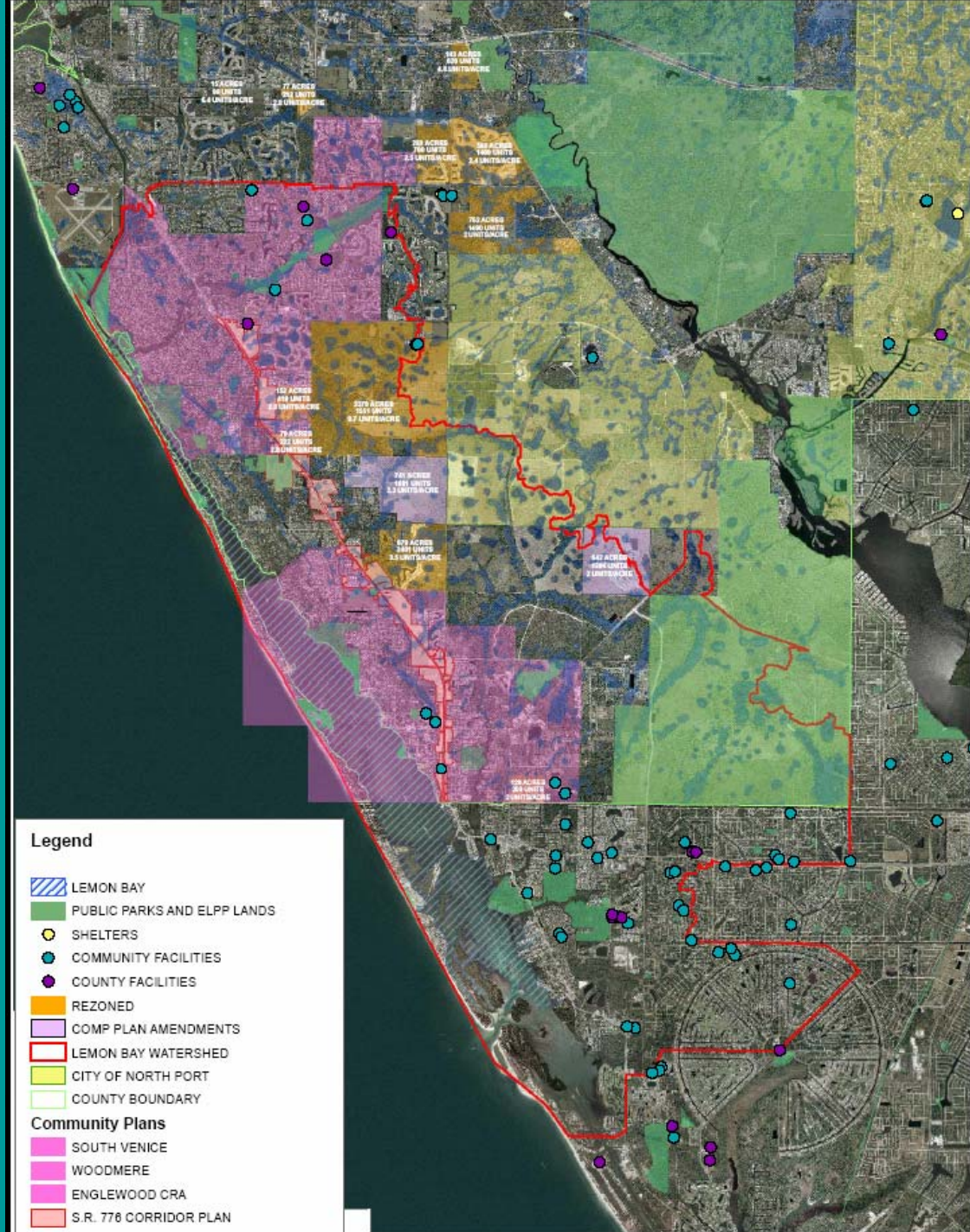
Buildings and Infrastructure  
Water  
Waste  
Energy Transportation  
Communication Systems

### **NATURAL**

Solar Energy  
Atmosphere  
Animal and Plant Communities  
Water  
Geology



# LEMON BAY - ASSET MAP







# *Lemon Bay League Inc.*

## **BUILDING COMMUNITY & RESOURCE PARTNERSHIPS:**

### **Community Partnerships:**

- **West Charlotte Civic Association**
- **Southwest County Alliance**
- **South Venice 2010**
- **South Venice Civic Association**
- **Englewood CRA Board**
- **Englewood Area Planning Advisory Board**
- **Thomas Ranch**
- **Englewood Water District**
- **Englewood Citizens for a Sustainable Learning Center**
- **Englewood Chamber of Commerce**





# *Lemon Bay League Inc.*

## **BUILDING COMMUNITY & RESOURCE PARTNERSHIPS:**

### **Resource Partnerships:**

- Charlotte County
- Sarasota County
- Southwest Regional Planning Council
- Lemon Bay Conservancy
- Sarasota Conservancy
- Charlotte Harbor National Estuary Program
- Southwest Florida Water Management District
- Charlotte Harbor Environmental Center
- Englewood Hospital
- Gulf Coast Community Foundation of Venice
- Florida House Institute
- Florida Gulf Coast University
- Sarasota Conservation Foundation
- Lemon Bay Aquatic Preserve
- Economic Development Corporation

# LEMON BAY COMMUNITY PARTNERSHIP – WORK PLAN ELEMENTS

- TASK 1 - Assist in the compilation of the Interagency Comprehensive Watershed Management Plan for Lemon Bay.
- TASK 2 – Assist in the compilation and analysis of historical data of Lemon Bay from the Bass Laboratory
- TASK 3 - Build Community Leadership Capacity
- TASK 4 - Facilitate community workshops to create a common understanding and a vision for natural, social, and economic systems in the Lemon Bay watershed region.
- TASK 5 - Develop a Watershed Stewardship Certification Program.
- TASK 6 - Develop sustainable criteria to guide future communities in the watershed region.

**THE END**