

SIMPLE-Monthly Pollutant Loading Model Results - Myakka River TN

- Section 1** TN Loading decreased by 3% from 2001-2016.
Irrigation was the component that saw the greatest increase in loading from 2001-2016 (+301%)
- Section 2** Stormwater Runoff is the greatest contributor to TN in the Myakka River basin, contributing 77% of the total load.
- Section 3** Myakka River basin is a major TN contributor to the Myakka River watershed.

Section 1

Myakka River

Total Nitrogen

Pollutant Loading Trend	Decrease	-3%	2001 to 2016
Components of the Trend			
Stormwater Runoff	Increase	1%	2001 to 2016
Baseflow	Increase	1%	2001 to 2016
Septic Systems	Decrease	-100%	2001 to 2016
Point Source	Increase	107%	2001 to 2016
Irrigation	Increase	301%	2001 to 2016
Atmospheric Deposition	Not Modeled		2001 to 2016

Year	Total	Runoff	Baseflow	Septic	Point Source	Irrigation	Atmospheric
2001	483617.71	360598.48	82458.89	18866.16	211.80	5629.94	0.00
2006	481331.94	349256.43	88157.19	20993.18	354.97	22570.17	0.00
2011	487221.54	363701.72	83379.34	18844.86	349.62	20946.00	0.00
2016	471336.84	364635.11	83668.97	0.00	439.28	22593.48	0.00

Units are pounds per year and modeled using a typical rainfall year.
 Jones Edmunds and Associates conducted this modeling for Sarasota County in 2017.
 Modeling was conducted only for the parts of basins located within Sarasota County.
 Pollutant loading from Atmospheric Deposition (wet and dry) was conducted only for bays.

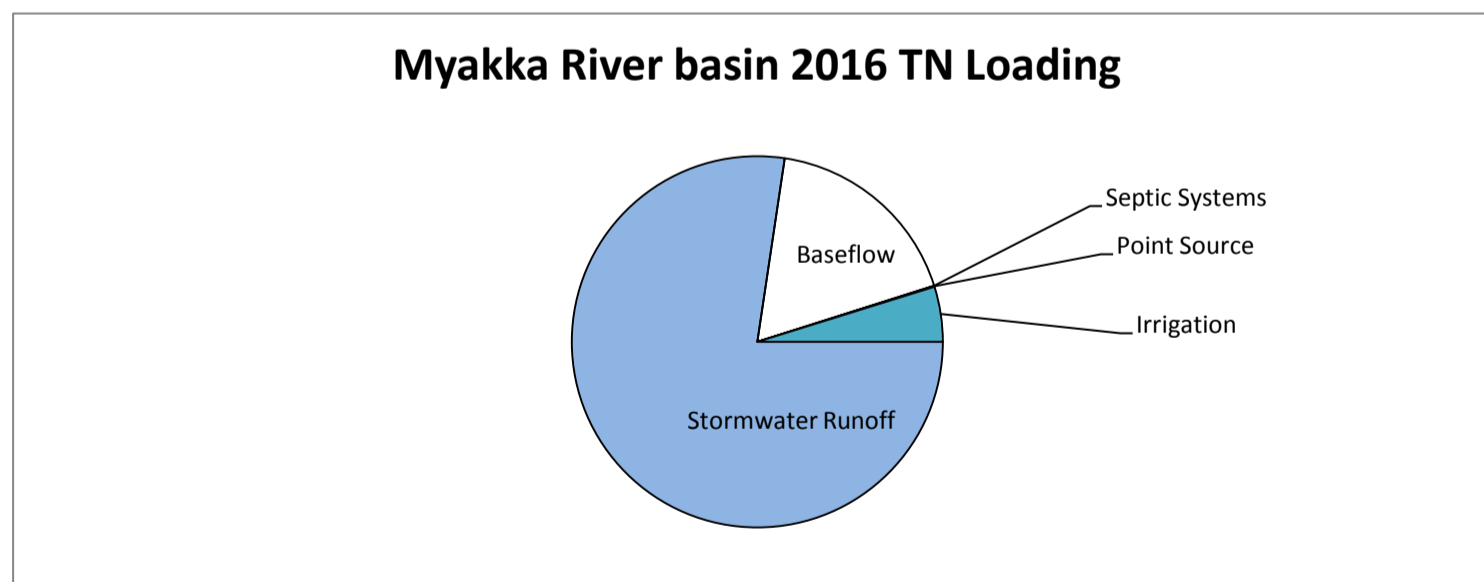
Section 2

Myakka River

Total Nitrogen

2016 Pollutant loading is influenced by some sources more than others

Stormwater Runoff	77%
Baseflow	18%
Septic Systems	0%
Point Source	0%
Irrigation	5%
Atmospheric Deposition	Not Modeled



Section 3

Myakka River

Total Nitrogen

2016 Pollutant loading to the Myakka River Watershed has more than one source

Proportion of loading is **High** when % load is compared to % acreage.
Myakka River acreage is 47% and % loading is 48%

Myakka II basin is a part of the **Myakka River Watershed**

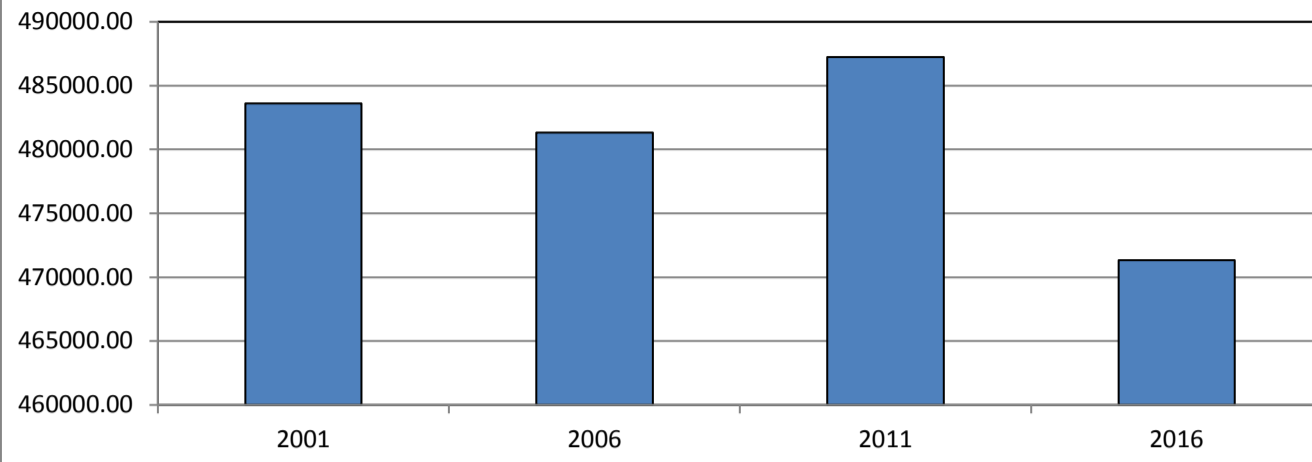
	Pounds TN 2016	Acreage
Myakka River Watershed	973,132	202,785

The following basins contribute to the loading to the Myakka River Watershed

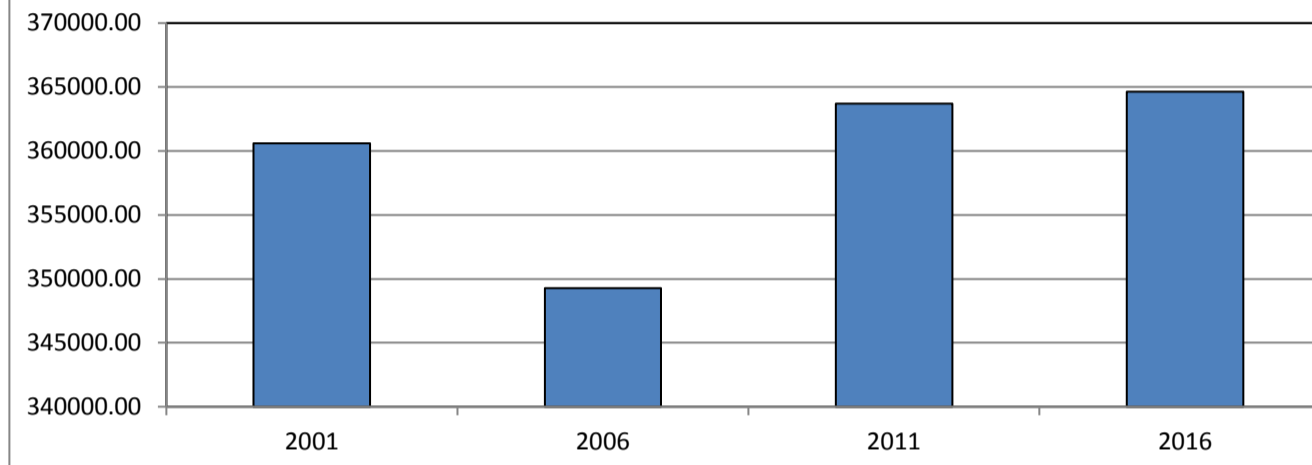
	Pounds TN 2016	% of Watershed Load	Acreage	% of Myakka River Watershed
Myakka River	471,337	48%	95,170	47%
Myakka River II*	48	0%	1,334	1%
Upper Myakka River	518	0%	3,699	2%
Big Slough	489,530	50%	84,625	42%
Deer Prairie Slough	11,486	1%	16,189	8%
Little Salt Creek	213	0%	1,769	1%

*The Myakka River was modeled as two separate sections due to computer limitations with the model.

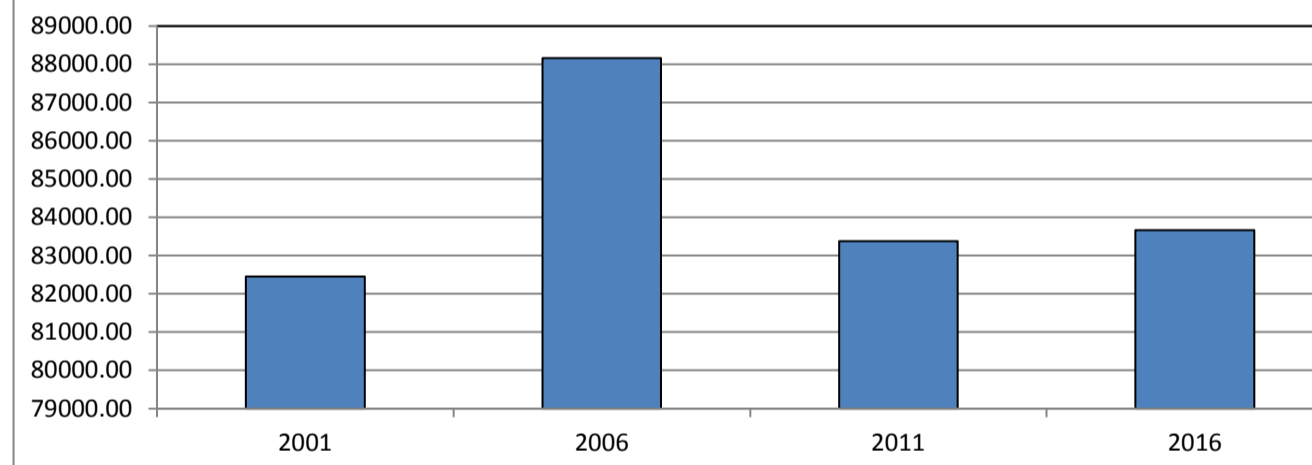
Myakka River basin Total TN Loading



Myakka River basin Runoff TN Loading



Myakka River basin Baseflow TN Loading



Myakka River basin Septic TN Loading

