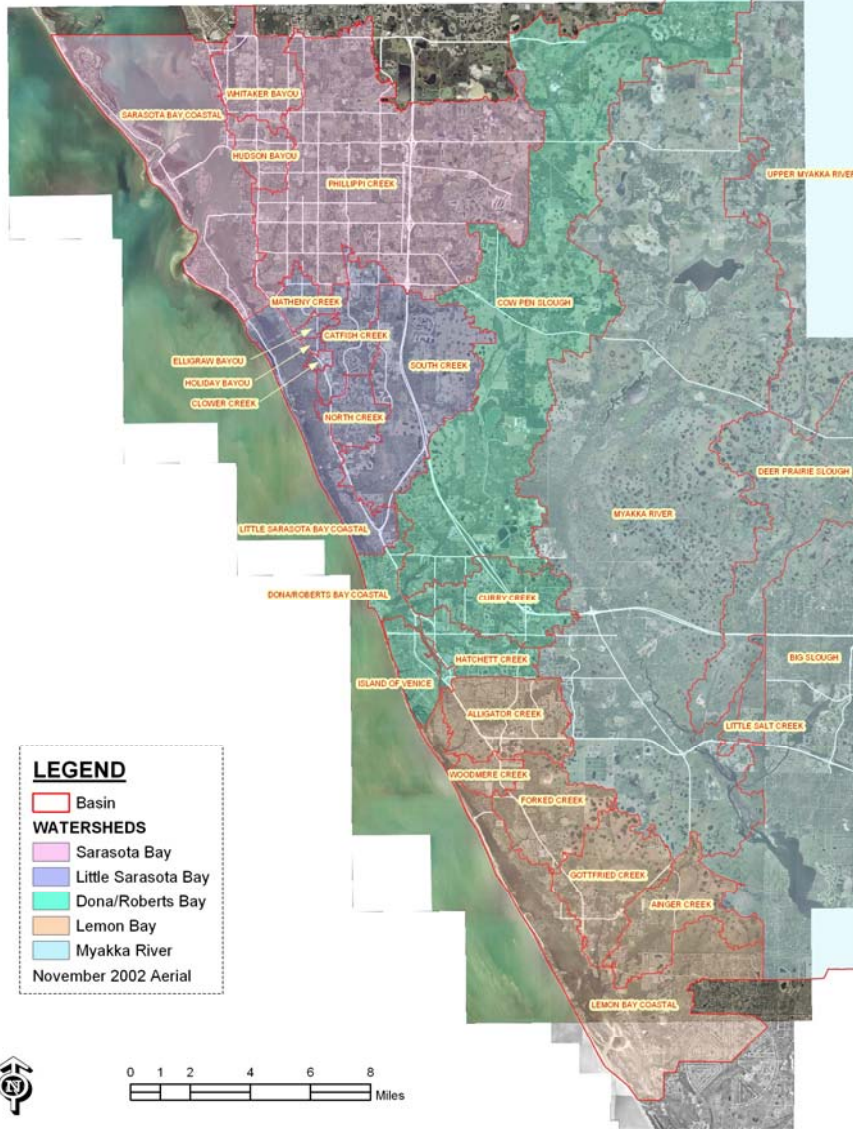


Sarasota County Flood Studies

- Primarily two program activities with flood studies
 - Model Maintenance
 - Model Updates

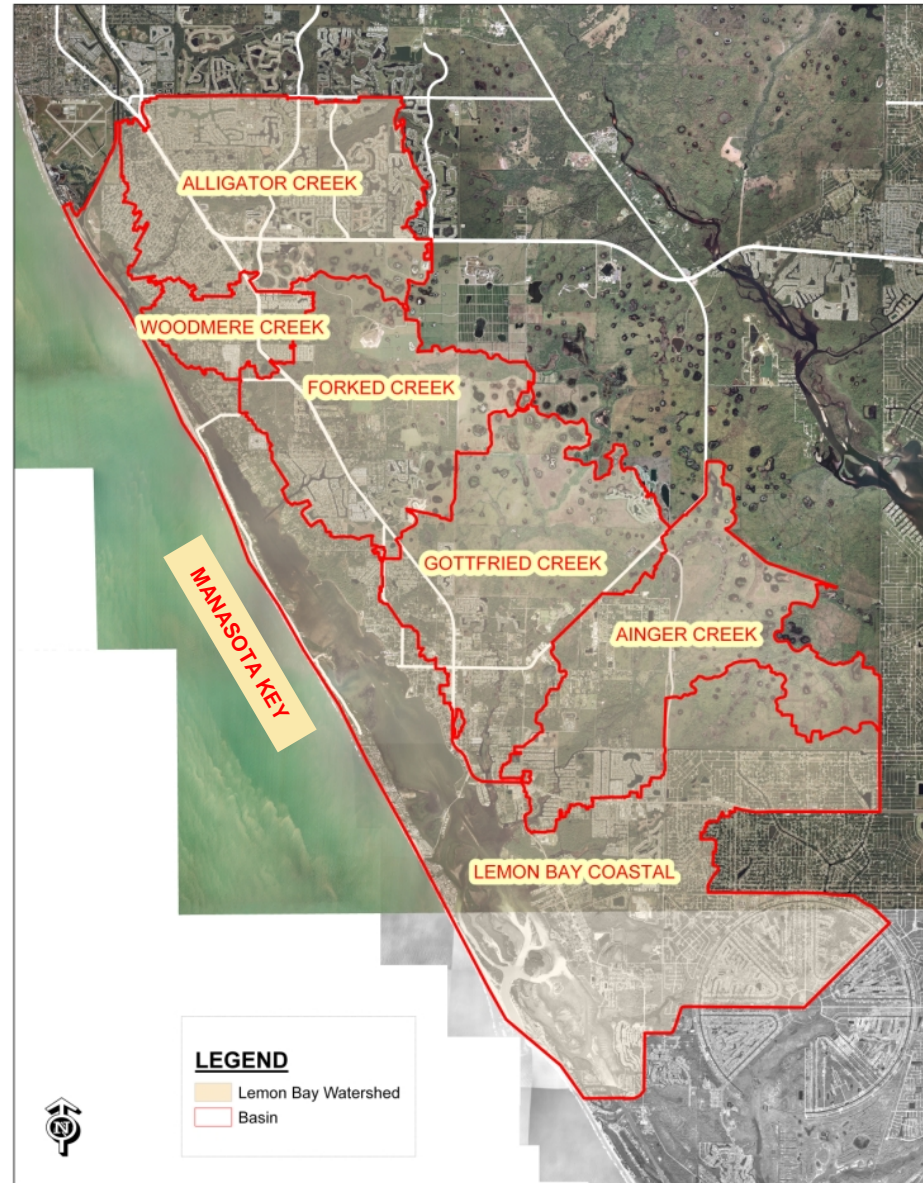
Center For Watershed Management Watershed Model Maintenance Program



Model Updates

- Current Model Updates for the Lemon Bay Watershed include:
 - Manasota Key
 - Lemon Bay Coastal Fringe

Lemon Bay Watershed



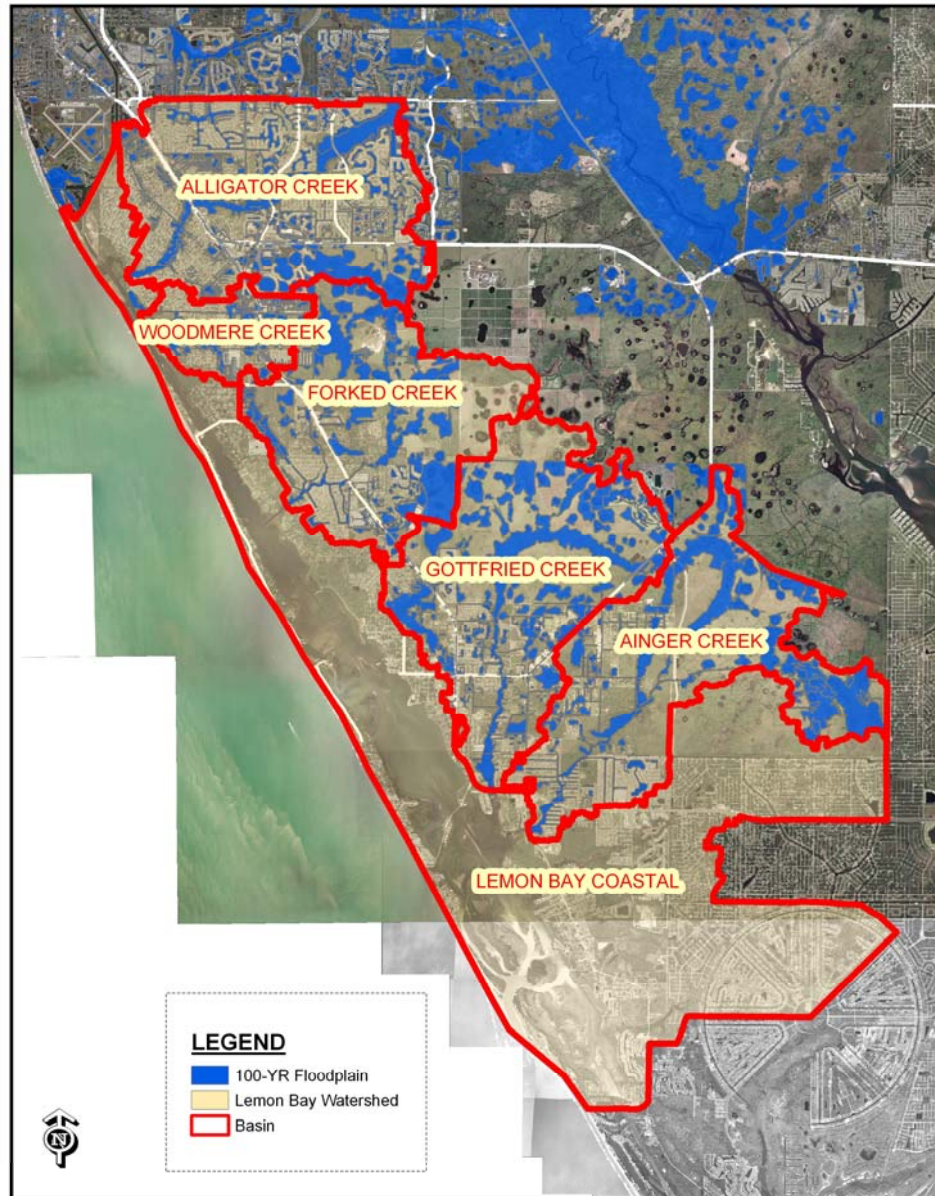
Major Work Tasks

- Topo / Survey Data Collection
- Hydrodynamic Parameterization
 - CN's, TC's and Nodal Storage
- Hydraulic Parameterization
 - Pipes, Control Structures and Weirs
- Model Computations & Maximum Storage Elevations
- 100-YR Floodplain Mapping
- LOS deficiencies identification (street and structure)
- Alternatives development to reduce flood risks to identified LOS deficiencies
- Cost Effective Analysis (avoid damages vs project construction cost and maintenance)
- Recommended Alternative(s) for future CIP project development

Model Interconnection

- Provide link connectivity between existing riverine flood studies and proposed Lemon Bay Coastal Fringe flood study
 - Riverine Studies include: Alligator Creek, Woodmere Creek, Forked Creek, Gottfried Creek and Anger Creek
- Creation of a single floodplain map layer for the entire Lemon Bay Watershed

Lemon Bay Watershed - 100-YR Floodplain



Coop Funding Agreement with SWFWMD

Currently Approved as a Multi – Year project:

- Beginning this year (FY 2007) in Siesta Key and Little Sarasota Bay Coastal
- Followed by Lido Key / St. Armands and Sarasota Bay Coastal in FY 2008
- Finally Manasota Key and Lemon Bay Coastal in FY 2009

Lemon Bay Coastal FY 2009

