



FLORIDA DEPARTMENT OF Environmental Protection

Bob Martinez Center
2600 Blair Stone Road
Tallahassee, Florida 32399-2400

Rick Scott
Governor

Carlos Lopez-Cantera
Lt. Governor

Noah Valenstein
Secretary

Phase I Municipal Separate Storm Sewer System (MS4) NPDES Stormwater Audit Report

I. BACKGROUND INFORMATION

MS4 Permit Name: City of North Port
Permittee: Sarasota County
Permit Number: FLS000004-004
Annual Report Year: Year 4
Reporting Period: January 2017 – December 2017
Audit Date/Time: August 29, 2018

Inspector(s):

Name	Title	Phone/ Email
Jonathan Turner	Environmental Consultant	850-245-8482 Jonathan.Turner@dep.state.fl.us

Permittee Representative(s):

Name	Permittee/Dept	Phone	Email
Elizabeth Wong	City of North Port – Public Works	941-240-8321	EWong@cityofnorthport.com
David Jayroe	City of North Port – Public Works	941-429-2228	DJayroe@cityofnorthport.com

II. GENERAL COMMENTS.

North Port is a city of about 70,000 which was developed with a series of flood-control canals which, along with Myakkahatchee Creek, are also used for the city's drinking water supply.

III. SITE VISITS

Satisfactory

Unsatisfactory

Not Applicable

Site Type: Public Works Yard and Fleet Maintenance

Site Name and Location: City of North Port Public Works and Fleet Maintenance

Applicable Permit Provision(s): Part III.A.3

Observations: City Public Works yard and fleet maintenance facility collects stormwater and discharges into on-site dry retention pond.



Satisfactory

Unsatisfactory

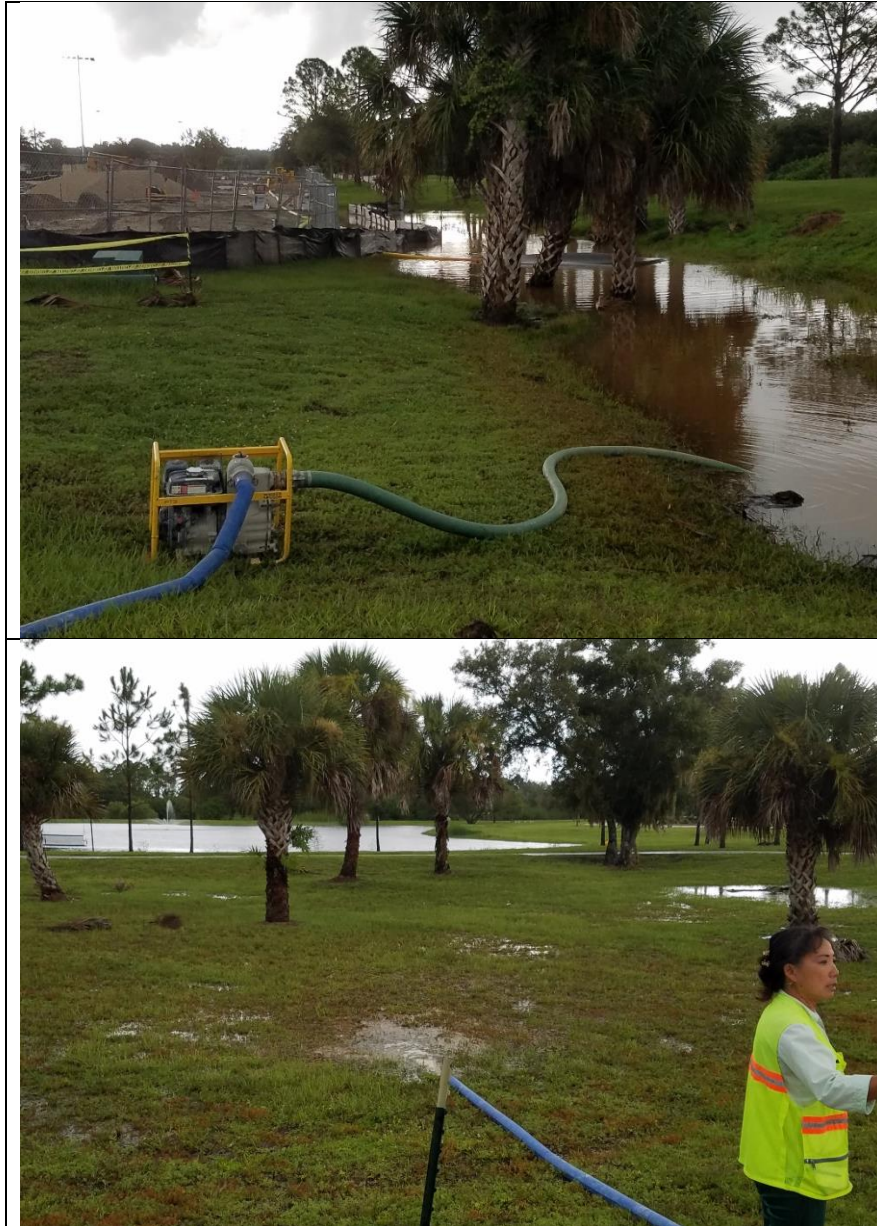
Not Applicable

Site Type: Construction

Site Name and Location: Aquatic Center at Butler Park

Applicable Permit Provision(s): Part III.A.9

Observations: Construction site after several days with heavy rainfall. The dewatering activities were filtered using a treatment train of filters and the available open areas before the water entered the nearby stormwater pond. Despite the recent rainfall, there was no noticeable sedimentation originating from the construction site.



IV. SWMP IMPLEMENTATION REVIEW

Monitoring Program

Satisfactory Unsatisfactory Not Applicable

Summary: The city has a sampling network of multiple locations along the canals within the city. The stations include sampling in the freshwater portions of the city and in the areas with tidal influences.

Fiscal Analysis

Satisfactory Unsatisfactory Not Applicable

Not reviewed during audit, but based on annual report review, city is implementing this section satisfactorily.

TMDL Prioritization

Satisfactory Unsatisfactory Not Applicable

City is working with county on addressing Gottfried Creek bacteria impairment, including participating in Walk-the-WBID exercise in 2015.

Part III.A.1: Structural Controls and Stormwater Collection Systems Operation

Satisfactory Unsatisfactory Not Applicable

Inspection frequency: City inspects entire inventory annually, including the city's 10 major outfalls.

Part III.A.2: Areas of New Development and Significant Redevelopment

Satisfactory Unsatisfactory Not Applicable

City is working on revising land development code to include more requirements pertaining Low-Impact Development (LID).

Part III.A.3: Roadways

Satisfactory Unsatisfactory Not Applicable

Street Sweeping: Contracted with USA Services, which is routinely audited by the city for QA. City receives load receipts which are then used to calculate the TN/TP loading.

Litter Control: Occurs daily.

Public Works Yard: City public works facility is inspected annually by the stormwater manager, but is regularly maintained and kept clear.

Part III.A.4: Flood Control Projects

Satisfactory Unsatisfactory Not Applicable

City works to include water quality treatment function on all flood control projects

**Part III.A.5: Municipal Waste Treatment, Storage, and Disposal Facilities
Not Covered by an NPDES Stormwater Permit**

Satisfactory Unsatisfactory Not Applicable

Public Works Yard: City public works facility is inspected annually by the stormwater manager, but is regularly maintained and kept clear.

Part III.A.6: Pesticides, Herbicides, and Fertilizer Application

Satisfactory Unsatisfactory Not Applicable

FDACS License: City staff who apply fertilizers, herbicides or pesticides are licensed thru FDACS.

Education/Outreach: City has robust outreach and education program

**Part III.A.7.a: Illicit Discharges and Improper Disposal —
Inspections, Ordinances, and Enforcement Measures**

Satisfactory Unsatisfactory Not Applicable

**Part III.A.7.c: Illicit Discharges and Improper Disposal —
Investigation of Suspected Illicit Discharges and/or Improper Disposal**

Satisfactory Unsatisfactory Not Applicable

Proactive Inspections: Conducted when city staff discover potential illicit discharges or illegal dumping during inspections.

Reactive Inspections: City responds to and follows up on reports of illicit discharges received from the public.

**Part III.A.7.d: Illicit Discharges and Improper Disposal —
Spill Prevention and Response**

Satisfactory Unsatisfactory Not Applicable

City staff are trained on proper responses to hazardous and non-hazardous spills.

**Part III.A.7.e: Illicit Discharges and Improper Disposal —
Public Reporting**

Satisfactory Unsatisfactory Not Applicable

Public Outreach: City has robust outreach and education program

**Part III.A.7.f: Illicit Discharges and Improper Disposal —
Oils, Toxics, and Household Hazardous Waste Control**

Satisfactory Unsatisfactory Not Applicable

Public Outreach: City has robust outreach and education program.

**Part III.A.7.g: Illicit Discharges and Improper Disposal —
Limitation of Sanitary Sewer Seepage**

Satisfactory Unsatisfactory Not Applicable

City has contracted services to prioritize repair/replacement of sanitary sewer systems in areas where SSOs occur.

**Part III.A.8.a: Industrial and High-Risk Runoff —
Identification of Priorities and Procedures for Inspections**

Satisfactory Unsatisfactory Not Applicable

The city does not have any high-risk facilities identified. Recommendation: The city should continue to evaluate facilities as high-risk which may contribute stormwater pollution to the city's MS4.

**Part III.A.8.b: Industrial and High-Risk Runoff —
Monitoring for High Risk Industries**

Satisfactory Unsatisfactory Not Applicable

Not applicable as the city has not identified any high-risk facilities.

**Part III.A.9.a: Construction Site Runoff —
Site Planning and Non-Structural and Structural Best Management Practices**

Satisfactory Unsatisfactory Not Applicable

The city reviews construction site plans and confirms appropriate coverage of state permits.

**Part III.A.9.b: Construction Site Runoff —
Inspection and Enforcement**

Satisfactory Unsatisfactory Not Applicable

Construction sites are prioritized between significant development projects and single-family houses. The significant development sites are inspected on a routine basis, and single-family houses are inspected 3 times (before, during and after) during the construction lifespan.

**Part III.A.9.c: Construction Site Runoff —
Site Operator Training**

Satisfactory Unsatisfactory Not Applicable

Inspectors are trained and given in-house refreshers on stormwater, erosion and sedimentation control principles.