



FLORIDA DEPARTMENT OF Environmental Protection

Bob Martinez Center
2600 Blair Stone Road
Tallahassee, Florida 32399-2400

Rick Scott
Governor

Carlos Lopez-Cantera
Lt. Governor

Noah Valenstein
Secretary

Phase I Municipal Separate Storm Sewer System (MS4) NPDES Stormwater Audit Report

I. BACKGROUND INFORMATION

MS4 Permit Name: City of Sarasota
Permittee: Sarasota County
Permit Number: FLS000004-004
Annual Report Year: Year 4
Reporting Period: January 2017 – December 2017
Audit Date/Time: August 30, 2018

Inspector(s):

Name	Title	Phone/ Email
Jonathan Turner	Environmental Consultant	850-245-8482 Jonathan.Turner@dep.state.fl.us

Permittee Representative(s):

Name	Permittee/Dept	Phone	Email
Georges Nicolas	City of Sarasota – Public Works	941-365-2200 x6367	Georges.Nicolas@sarasotafl.gov
Leonard Scherry	City of Sarasota – Public Works	941-365-2200 x4367	Leonard.Scherry@sarasotafl.gov

II. GENERAL COMMENTS.

Sarasota is a city in Sarasota County of about 55,000 people. The city has an interlocal agreement with the county which, among other things, has the county performing inspections and maintenance of the stormwater infrastructure, as well as responses to illicit discharges.

III. SITE VISITS

Satisfactory

Unsatisfactory

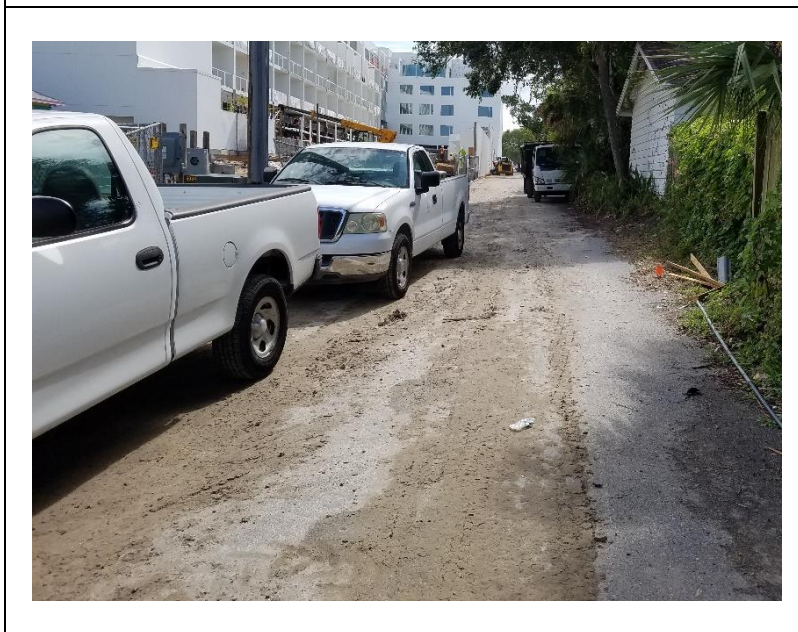
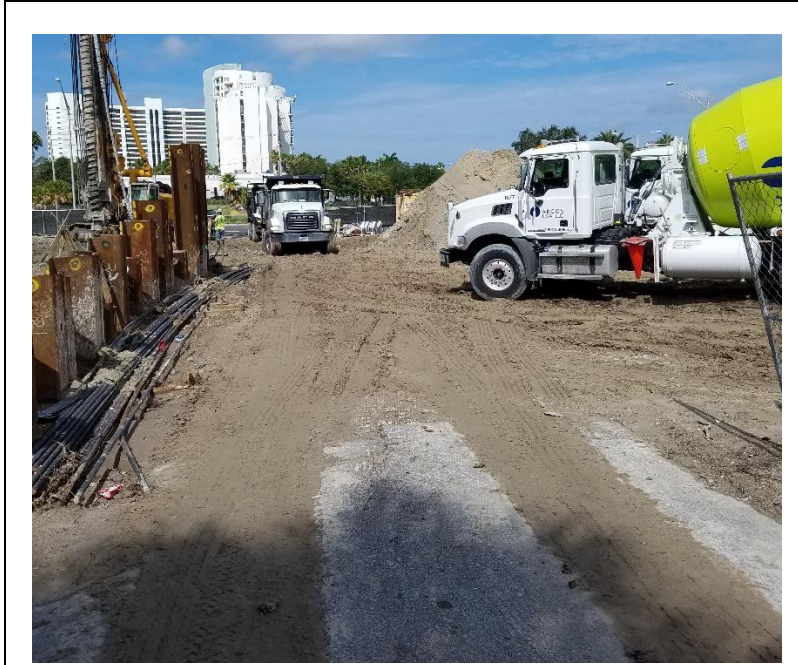
Not Applicable

Site Type: Construction Site

Site Name and Location: Corner of US 41 and Blvd of the Arts.

Applicable Permit Provision(s): Part III.A.9

Observations: After recent rainfall, there was evidence of much sedimentation and tracking originating from the worksite. City inspectors had been at the site earlier in the day and issued a fine with the notice of violation for the worksite.



IV. SWMP IMPLEMENTATION REVIEW

Assessment Program

Satisfactory Unsatisfactory Not Applicable

Summary: County has robust monitoring program which includes multiple chemical and biological markers and includes routine sampling for indicator species in estuarine areas.

Fiscal Analysis

Satisfactory Unsatisfactory Not Applicable

Not reviewed during audit, but condition is satisfactory based on annual report reviews

TMDL Prioritization

Satisfactory Unsatisfactory Not Applicable

City works with county on TMDL implementation for Phillippi Creek. Significant progress has been made towards eliminating potential sources of bacteria pollution in the Phillippi Creek.

Part III.A.1: Structural Controls and Stormwater Collection Systems Operation

Satisfactory Unsatisfactory Not Applicable

Sarasota has interlocal agreement with the county on maintenance and inspections of city stormwater inventory.

County utilizes MAXIMO software system as a tool for tracking inventory of all structures and assigning work-orders for inspections and maintenance of structures. County is split into zones to aid in meeting NPDES permit requirements. County utilizes ArcGIS for mapping of inventory which includes city infrastructure.

Part III.A.2: Areas of New Development and Significant Redevelopment

Satisfactory Unsatisfactory Not Applicable

Not specifically reviewed during audit, but condition is satisfactory based on annual report reviews

Part III.A.3: Roadways

Satisfactory Unsatisfactory Not Applicable

Street Sweeping: City has in-house street sweeping which is able to cover city on monthly basis, or with increased frequency when appropriate. The city tracks this information to report.

Litter Control: Occurs daily.

Public Works Yard: City staff regularly inspect the public works yard, and county staff annually inspect

Part III.A.4: Flood Control Projects

Satisfactory Unsatisfactory Not Applicable

City incorporates stormwater treatment aspects into projects where available.

**Part III.A.5: Municipal Waste Treatment, Storage, and Disposal Facilities
Not Covered by an NPDES Stormwater Permit**

Satisfactory Unsatisfactory Not Applicable

Public Works Yard: City staff regularly inspect the public works yard, and county staff annually inspect

Part III.A.6: Pesticides, Herbicides, and Fertilizer Application

Satisfactory Unsatisfactory Not Applicable

FDACS License: City maintain records of staff who apply fertilizers, herbicides or pesticides and are licensed thru FDACS, as well as contractors licensed thru FDACS.

Education/Outreach: County has robust education and outreach program which the city also participates. County utilizes WaterAtlas website and many other campaigns to educate the public on who to contact if there are any issues involving potential illicit discharges.

**Part III.A.7.a: Illicit Discharges and Improper Disposal —
Inspections, Ordinances, and Enforcement Measures**

Satisfactory Unsatisfactory Not Applicable

**Part III.A.7.c: Illicit Discharges and Improper Disposal —
Investigation of Suspected Illicit Discharges and/or Improper Disposal**

Satisfactory Unsatisfactory Not Applicable

Proactive Inspections: City and county conduct proactive inspections in areas and at locations which have been known to have had recurring issues.

Reactive Inspections: Sarasota County Air & Water Quality inspectors perform inspections when complaints are received. Public can call county hotline, or use the See-Click-Fix mobile app to submit complaints.

**Part III.A.7.d: Illicit Discharges and Improper Disposal —
Spill Prevention and Response**

Satisfactory Unsatisfactory Not Applicable

County has developed web-based training program which is used by co-permittees for training purposes. City distributes county training to appropriate staff within the city.

**Part III.A.7.e: Illicit Discharges and Improper Disposal —
Public Reporting**

Satisfactory Unsatisfactory Not Applicable

Public Outreach: City has robust outreach and education program

**Part III.A.7.f: Illicit Discharges and Improper Disposal —
Oils, Toxics, and Household Hazardous Waste Control**

Satisfactory Unsatisfactory Not Applicable

Public Outreach: City and county has robust outreach and education program

**Part III.A.7.g: Illicit Discharges and Improper Disposal —
Limitation of Sanitary Sewer Seepage**

Satisfactory Unsatisfactory Not Applicable

City owns and operates the sanitary sewer in the city and regularly performs maintenance activities to the infrastructure to reduce/eliminate potential infiltration.

**Part III.A.8.a: Industrial and High-Risk Runoff —
Identification of Priorities and Procedures for Inspections**

Satisfactory Unsatisfactory Not Applicable

County maintains the list of high-risk facilities in the city.

Recommendation: The city should work with the county to make sure that the list is up-to-date with facilities which may impact the city's MS4.

**Part III.A.8.b: Industrial and High-Risk Runoff —
Monitoring for High Risk Industries**

Satisfactory Unsatisfactory Not Applicable

High-risk facilities are sampled when deemed necessary by the SOPs.

**Part III.A.9.a: Construction Site Runoff —
Site Planning and Non-Structural and Structural Best Management Practices**

Satisfactory Unsatisfactory Not Applicable

City reviews construction plans and notifies permittees of potential need to attain other state permits. City can track entire review process thru city database.

**Part III.A.9.b: Construction Site Runoff —
Inspection and Enforcement**

Satisfactory Unsatisfactory Not Applicable

City regularly inspects all active construction sites within the city and tracks the inspections thru the city database. City has enforcement capabilities and can levy fines and stop work at sites when appropriate.

**Part III.A.9.c: Construction Site Runoff —
Site Operator Training**

Satisfactory Unsatisfactory Not Applicable

Appropriate staff are certified through the FDEP sedimentation and erosion control program, and conduct annual refreshers to remind staff of city procedures for inspections and enforcement actions.