

SARASOTA COUNTY

and the

CITY OF SARASOTA

ANNUAL REPORT

for PERMIT YEAR SIX

January 1, 2000 to December 31, 2000

National Pollutant Discharge Elimination System

Municipal Separate Storm Sewer System

Permit Number FLS000004

Co-Permittees with:

City of Venice

City of North Port

Town of Longboat Key

Florida Department of Transportation, District 1

Table of Contents

Page

REPORT CERTIFICATIONS	1
SECTION 1 - LIST OF CONTACTS	3
SECTION 2 - STORM WATER MANAGEMENT PROGRAM EVALUATION	
2.1 Objective of Program	5
2.2 Major Findings	6
2.3 Major Accomplishments	8
2.4 Overall Program Strengths and Weaknesses	9
2.5 Future Direction of Program	10
SECTION 3 - SUMMARY TABLE	
3.1 Maintenance of Structural Controls	11
3.2 Development Planning Procedures	12
3.3 Roadway Maintenance	14
3.4 Flood Management	17
3.5 Municipal Facilities	18
3.6 Pesticides, Herbicides, and Fertilizers	19
3.7 Illicit Discharges and Improper Disposal	20
3.8 High Risk Industrial Facilities	27
3.9 Construction	29
SECTION 4 - NARRATIVE REPORTS	
4.1 Maintenance of Structural Controls	35
4.2 Development Planning Procedures	37
4.3 Roadway Maintenance	39
4.4 Flood Management	40
4.5 Municipal Facilities	42
4.6 Pesticides, Herbicides, and Fertilizers	45
4.7 Illicit Discharges - Inspection, Investigation, and Enforcement	53
4.8 Field Screening	54
4.9 Spill Response	55
4.10 Public Reporting of Illicit Discharges	57
4.11 Oil and Household Hazardous Waste	59
4.12 Sanitary Sewage Seepage	60
4.13 High Risk Industrial Facility Inspection	64
4.14 Construction Planning Procedures	66
4.15 Construction Inspections	67
4.16 Education Activities	68
4.17 Monitoring Activities	69
4.18 Additional SWMP Activities	70

SECTION 5 - MONITORING PROGRAM REPORT	
5.1 Monitoring Objectives	71
5.2 Summary Table of Completed Monitoring	72
5.3 Monitoring Conclusions	73
5.4 Monitoring Compliance	75
5.5 Monitoring Program Revisions	76
5.6 Additional Major Outfalls	77
SECTION 6 - PERMIT MODIFICATIONS	
6.1 Storm Water Management Program Modifications	78
6.2 Monitoring Program Modifications	79
6.3 Other Permit Modifications	80
SECTION 7 - FISCAL ANALYSIS	81
APPENDICES	
A Structural Controls Inspections	
B Stormwater Capital Improvement Projects	
C Citizen Complaint Investigations Log	
D Dry-Weather Field Screening Inspection Log	
E High Risk Industrial Facility Inspections	
F Erosion Inspection Log	
G Environmental Landscape Management	
H Ambient Monitoring Program Segments	

Report Certification for Sarasota County

I certify under penalty of law that this document and all attachments were prepared under my direction or supervision in accordance with a system designed to assure that qualified personnel gathered and evaluated the information submitted. Based on my inquiry of the person or persons who manage the system, or those persons directly responsible for gathering the information, the information submitted is, to the best of my knowledge and belief, true, accurate, and complete. I am aware that there are significant penalties for submitting false information, including the possibility of fine and imprisonment for knowing violations.

David R. Bullock, Deputy County Administrator
Sarasota County

Date

Report Certification for the City of Sarasota

I certify under penalty of law that this document and all attachments were prepared under my direction or supervision in accordance with a system designed to assure that qualified personnel gathered and evaluated the information submitted. Based on my inquiry of the person or persons who manage the system, or those persons directly responsible for gathering the information, the information submitted is, to the best of my knowledge and belief, true, accurate, and complete. I am aware that there are significant penalties for submitting false information, including the possibility of fine and imprisonment for knowing violations.

David R. Sollenberger, City Manager
City of Sarasota

Date

Section 1 - List of Contacts

Co - Permittee Contacts

Sarasota County: Laura Ammeson, Environmental Supervisor
Pollution Control
2817 Cattlemen Road
Sarasota, FL 34232
Phone: (941) 378-6128, extension 5606
Fax: (941) 378-6563
lammeson@co.sarasota.fl.us

City of Sarasota: David R. Sollenberger, City Manager
P.O. Box 1058
Sarasota, FL 34230
Phone: (941) 954-4102
Fax: (941) 954-4129
david_sollenberger@ci.sarasota.fl.us

City of Venice: Nancy K. Woodley, Ph.D., P.E., City Engineer
401 West Venice Avenue
Venice, FL 34285
Phone: (941) 486-2626, extension 2066
Fax: (941) 480-3031
nwoodle@ci.venice.fl.us

City of North Port: Chris Dilley, P.E., Stormwater Manager
1930 West Price Boulevard
North Port, FL 34286
Phone: (941) 423-7220, extension 225
Fax: (941) 423-6608
cdilley@cityofnorthport.com

Town of
Longboat Key: Bruce St. Denis, Town Manager
501 Bay Isles Road
Longboat Key, FL 34228
Phone: (941) 316-1999
Fax: (941) 316-1942
bstdenis@cyberstreet.com

Florida
Department of
Transportation: T.W. Hunt, P.G., Environmental Manager
Division of Operations/Maintenance, District One
801 N. Broadway Avenue
Bartow, FL 33831-1249
Phone: (863) 519-2560
Fax: (863) 534-7045
tw.hunt@dot.state.fl.us

This Annual Report is compiled and produced for Sarasota County and the City of Sarasota. The co-permittees, including the Florida Department of Transportation, District 1, the Town of Longboat Key, the City of Venice, and the City of North Port, submit Annual Reports that have been produced independently. All co-permittees have participated in a committee discussion of the issues presented in this report that apply to all co-permittees, such as permit modifications.

Contributors to this Report from Sarasota County

Gene Middaugh	Land Development Services	378-6890
Jim Somers	Drainage Operations	316-1460
Kirk Bagley	Stormwater Management	378-6148
Ben Newman	Road Construction	378-6040
Mike Holsinger	Cooperative Extension Services	316-1000
Jim Brown	Utilities	316-1591
Sandra Washington	Keep Sarasota Beautiful	364-4667
Lois Rose	Hazardous Waste	316-1301
Doug Wolfe	Fire Department	361-6881
Don Shaulis	Solid Waste	486-2600
Dr. Lyman Roberts	Mosquito Management	316-1247
Gus Klein	Parks and Recreation	316-1172
Richard Sanger	Parks and Recreation	316-1269
Norm Easey	Forestry	316-1460
Dr. Fred Santana	Integrated Pest Management	316-1206
Marie Wilson	Drainage Operations	316-1460
Brooke Elias	Resource Management	378-6142
Nina Powers	Facilities Maintenance	316-1087
Laura Ammeson	Pollution Control	378-6128

Contributors to this Report from the City of Sarasota

Richard Winters	Engineering	954-4180
Richard Meier	Public Services Division	954- 4198
Doug Taylor	Utilities	955-2325
Mark Hess	Planning	954-4195

Storm Water Management Program Evaluation

Section 2.1 - Objective of Program

The objective of the Storm Water Management Program (SWMP) is to improve the quality of surface waters in Sarasota County by improving the quality of stormwater runoff, through implementation of the many elements of the permit that was developed by the co-permittees in cooperation with the Florida Department of Environmental Protection (Department), and the United States Environmental Protection Agency (EPA).

Storm Water Management Program Evaluation

Section 2.2 - Major Findings

Monitoring of Hudson Bayou has been very informative, as described in the Annual Report for Year Five (1999). The Bayou is heavily contaminated by lead-tainted sediments, but does not currently receive correspondingly high amounts of lead from stormwater or other discharges. Concentrations of lead in the water column are intermittently elevated, probably related to weather conditions that stir up contaminated sediments. An interagency investigation of the situation has expanded far beyond the permit required monitoring that was completed last year. No source of the contamination has been identified.

By today's public health and environmental protection standards, there are unacceptable wastewater treatment methods in the Phillippi Creek Basin. Nearly 14,000 septic systems discharge 2.8 million gallons of partially treated wastewater into the ground every day. An extensive study concluded the most cost-effective solution is a central sewer system. As a result, the Sarasota Board of County Commissioners has developed and adopted a wastewater improvement program. The goal of this program is to replace ineffective, outdated septic systems and small package wastewater treatment plants. In the fall of 2000 an eight to ten-year septic system replacement program began by connecting 14,000 homes to the central sewer system.

The City and County continued the Basin Master Planning program; approving new studies and updating previously completed studies. The newly approved studies, covering North Creek and Woodmere Creek, were adopted by the Board of County Commissioners during 2000. Several other basin studies were updated to include a significant amount of detailed information. It is anticipated that the basin studies and necessary updates will be completed in 2002. Upon reaching completion of this element, the permit will require modification. Although complete, the basin studies will need to be maintained to reflect on-going development and new information as it is discovered. In addition, staff previously involved in the master planning process will be able to focus more directly on water quality issues rather than flood control.

The Cooperative Extension Service met the public demand for information about environmentally friendly living. Programs continued to encourage reductions in the use of pesticides, herbicides, fertilizers, and excessive irrigation as well as encouraging landscape designs that minimize stormwater runoff. The Florida Yards and Neighborhoods program recommended Environmental Landscape Management principles to reduce energy consumption, waste generation, and the environmental impact of residential living. The Florida House received over 9,000 visitors, 30,000 people received assistance by contacting the Extension Helpdesk, and there were over 136,000 visitors to the internet website. Additional outreach efforts were made to public schools, condominiums, homeowner associations, builders, developers, landscape architects, and homeowners certifying their residential property as "Florida Yards."

Storm Water Management Program Evaluation

Section 2.3 - Major Accomplishments

Additional progress was made in completing and updating Basin Master Plans and Capital Improvement Projects. Thirteen Basin Master Plans were completed, and seven were updated.

All required monitoring was completed. The forty stations sampled monthly provided data useful to state and regional agencies involved in watershed studies. An evaluation of the data is in Section 5 of this report.

Domestic wastewater utilities for the City of Sarasota and Sarasota County continued to improve specific collection systems that are most prone to overflow. Both were involved in repairing privately-owned portions of the collection system. This is a fresh approach to a seemingly intractable problem.

Municipal agencies continued to improve housekeeping, storage, and disposal practices of contaminating materials. Many separate units of the City and County generate petroleum, rinsates, and wash-wastewaters that need special disposal. Each year additional headway is made in improving materials management.

Streets and stormwater systems were well maintained, although it required a substantial allocation of money, manpower, and coordination. The maintenance schedules are in Sections 3 and 4 of this report.

Proper disposal methods were made more available to citizens and small businesses in Sarasota County by Hazardous Waste Management. These programs redirect a tremendous amount of waste from illicit disposal methods that could contaminate storm water. The amounts and types of materials are described in Sections 3 and 4 of this report.

Many minor illicit discharges were alleviated through voluntary compliance with County ordinances. Pollution Control was involved in 149 enforcement actions (including voluntary compliance following notification of a violation) and Hazardous Waste was involved in three.

Storm Water Management Program Evaluation

Section 2.4 - Overall Program Strengths and Weaknesses

SWMP strengths include:

- The comprehensive nature of the SWMP addressed many important issues.
- The ambient monitoring data was well designed to provide useful information for watershed planning.

SWMP weaknesses include:

- Dry-weather field screening has redirected manpower away from more productive pursuits;
- The construction site inspection checklist is needlessly specific;
- Discharge monitoring report forms are inappropriate for ambient water quality data;
- Some elements of the monitoring program could be better focused on identifying areas in need of water quality improvements. Improvements continue to be negotiated; and
- The permit could be more concise in defining the SWMP. The same is true of the annual reporting requirements.

Storm Water Management Program Evaluation

Section 2.5 - Future Direction of Program

- Land Development Services will improve the continuity of silt screen barriers and reduce persistent problems of minor breeches in the screens.
- Additional effort may be directed to improving coordination and oversight among the eight organizational units in the County involved in pesticide usage to expand the employment of least-toxic and nontoxic practices.
- Funding options for water quality improvement projects will be evaluated.
- Utilities will continue to upgrade sewage systems and reduce sewage and effluent spills throughout their service areas. More information about these efforts are in Section 4 of this report.

Summary Table for SWMP Activities

Section 3.1 - Maintenance of Structural Controls

PROGRAM ELEMENT	PERMITTEE	REQUIREMENT	ACTIVITY SCHEDULE			COMMENTS
			Activities Required by SWMP	Complied With	Activities Accomplished During Calendar Year	
1. Operation and Maintenance of Structural Controls and Stormwater Collection System	Sarasota County & City of Sarasota	Perform inspections and maintenance of structural controls. Maintain an internal record keeping system to track inspections and maintenance activities performed during the permit. Conduct an annual assessment of the effectiveness of inspection and maintenance schedule and provide a summary of the assessment in each Annual Report.	Inspect and keep records.	Yes	Structural controls were inspected and maintained, including mowing, debris removal, sediment removal, and erosion repair. Records were kept on computer.	Monthly wet retention system inspections. 1,176 total inspections. Herbicides applied as needed. Refer to the narrative section of this report for the assessment. Refer to Appendix A for inventories and schedules.
	Sarasota County & City of Sarasota	Identify and inventory each privately owned and maintained stormwater management facility, which discharges into the MS4. Within 12 months of the effective date of the permit (1-1-96).	Update inventory.	Yes	The inventory continued to be updated.	Private treatment systems are identified in the Storm Water Assessment database.
	Sarasota County & City of Sarasota	Develop a revolving inspection program for privately owned and maintained stormwater treatment systems which discharge into the MS4 to determine the compliance with local permit conditions and/or local ordinances. Program developed shall include a description of the enforcement provisions for non-compliance. Following development, include a summary of the inspection program and schedule in the subsequent Annual Report for incorporation into the permit. Within 12 months of the effective date of the permit (1-1-96).	Completed in previous years.	Yes	Completed in previous years.	
	Sarasota County & City of Sarasota	Implement revolving inspection program for privately owned and maintained stormwater systems, which discharge into the MS4 within 24 months of the effective date of the permit (1-1-97).	Inspect.	Yes	The inspection program continued. 65 private stormwater systems were inspected.	The new database identifies systems due for inspection.
	Sarasota County	Complete the Florida Water and Pollution Control Operators Association (FW&PCOA) course or equivalent.	Train 5 employees per year.	Yes	Refer to Sections 3.9 and 4.16 of this Annual Report for information about equivalent erosion and sediment control training.	
	City of Sarasota	Complete the Florida Water and Pollution Control Operators Association (FW&PCOA) course or equivalent.	Train 1 employee per permit.	Yes	The City inspector was FW&PCOA trained in 1995.	

Summary Table for SWMP Activities

Section 3.2 - Development Planning Procedures

PROGRAM ELEMENT	PERMITTEE	REQUIREMENT	ACTIVITY SCHEDULE			COMMENTS
			Activities Required by SWMP	Complied With	Activities Accomplished During Calendar Year	
2: Control of Discharges from Areas of New Development and Significant Redevelopment.	Sarasota County	Adopt as local ordinances stormwater quality treatment criteria consistent with, but not necessarily similar to, the State of Florida Storm Water Treatment Regulations (FAC 40D-4, 40D-40, 62-25). Prior to the end of the permit term (12-31-99).	Completed in previous years.	Yes	Sarasota County Land Development Regulations require the detention and treatment of stormwater in order to improve the quality of stormwater runoff.	The Land Development Regulations were revised during 2000 to better address flood control and water quality issues related to new development. Pertinent revisions will be provided in the next annual report.
	City of Sarasota	Adopt as local ordinances stormwater quality treatment criteria consistent with, but not necessarily similar to, the State of Florida Storm Water Treatment Regulations (FAC 40D-4, 40D-40, 62-25). Prior to the end of the permit term (12-31-99).	Submitted with permit application.	Yes	City stormwater regulations pertaining to new development is governed by the Engineering Design Criteria Manual, Chapter 29.5 of the Code of the City of Sarasota.	
	Sarasota County & City of Sarasota	Continue on the current schedule to perform master basin studies on the major watersheds identified in Table 1 on page 4A-34 of Appendix A. Develop a course of action for each as they are completed. Include in each Annual Report a brief summary of each basin study completed during the permit year and resulting course of action. Effective date of permit (1-1-95).	Study & Summarize.	Yes	Two basin studies were adopted in 2000. Completed basin master plans were updated to better define the floodplain and identify flood protection level of service deficiencies.	Basin updates better defined limits of floodplains. Updated basin models were used to determine effects of development and as a mechanism to protect the flood plain from development and other encroachments.
	Sarasota County	Evaluate land development practices to reduce the amount of impervious surfaces in future development. After completing the evaluation, include a summary of the resulting course of action in the subsequent Annual Report for incorporation into the permit. Within 36 months of the effective date of the permit (1-1-98).	Completed in previous years.	Yes	County Land Development Regulations are updated annually.	Current zoning regulations require open space.
	City of Sarasota	Evaluate land development practices to reduce the amount of impervious surfaces in future development. After completing the evaluation, include a summary of the resulting course of action in the subsequent Annual Report for incorporation into the permit. Within 36 months of the effective date of the permit (1-1-98).	Completed in previous years.	Yes	The City Comprehensive Plan includes language about reducing impervious surfaces. The January 2001 draft zoning code update includes proposed impervious surface limitations for all single-family residential zones.	

PROGRAM ELEMENT	PERMITTEE	REQUIREMENT	ACTIVITY SCHEDULE			COMMENTS
			Activities Required by SWMP	Complied With	Activities Accomplished During Calendar Year	
2: Control of Discharges from Areas of New Development and Significant Redevelopment (continued)	Sarasota County	Implement appropriate land development practices and incentives for the reduction of impervious surfaces. As determined by the evaluation - prior to the end of the permit term (12-31-99).	Implement LDRs.	Yes	Developers were encouraged to retain open space through the LDR; Incentives were realized through reduced stormwater assessments when impervious surfaces were reduced.	
	City of Sarasota	Implement appropriate land development practices and incentives for the reduction of impervious surfaces. As determined by the evaluation - prior to the end of the permit term (12-31-99).	Implement LDRs.	Yes	The City Comprehensive Plan includes language about reducing impervious surfaces. The January 2001 draft zoning code update includes proposed impervious surface limitations for all single-family residential zones.	

Summary Table for SWMP Activities

Section 3.3 - Roadway Maintenance

PROGRAM ELEMENT	PERMITTEE	REQUIREMENT	ACTIVITY SCHEDULE			COMMENTS
			Activities Required by SWMP	Complied With	Activities Accomplished During Calendar Year	
3: Operation and Maintenance of Public Streets, Roads, and Highways	Sarasota County	Provide a description of the municipally operated litter control programs for highways and streets within the jurisdictional area for incorporation into the permit. Provide in first Annual Report.	Completed in previous years.	Yes	The program reported in the Annual Report for Year One was continued.	
	City of Sarasota	Provide a description of the municipally operated litter control programs for highways and streets within the jurisdictional area for incorporation into the permit. Provide in first Annual Report.	Completed in previous years.	Yes	The City continued the litter control programs reported in the Annual Report for Year One, and continued to participate in Keep Sarasota Beautiful.	
	Sarasota County	Implement litter control programs for highways and streets within the jurisdictional area and properly dispose of collected material. Effective date of the permit (1-1-95).	Control litter.	Yes	Stormwater Operations (Aquatic Plant Control), Adopt-a-Pond, Keep Sarasota Beautiful, storm drain placarding, and litter control of roads, ponds, shorelines, lakes, and canals continued.	153 Areas were adopted. 622 storm drain placards were installed, accounting for 336 hours of work.
	City of Sarasota	Implement litter control programs for highways and streets within the jurisdictional area and properly dispose of collected material. Effective date of the permit (1-1-95).	Control litter.	Yes	Stormwater Operations (Aquatic Plant Control), Adopt-a-Pond, Keep Sarasota Beautiful, storm drain placarding, and litter control of roads, ponds, shorelines, lakes, and canals continued.	Approximately 150 trash receptacles were placed throughout the City parks and in shopping areas. They were picked up by either Solid Waste or Landscaping crews. Day laborers pick up trash in alleys, along railroads, and in other public areas. On a monthly basis, litter is picked up along all the state roads in the City. Public Works continues to participate in Keep Sarasota Beautiful and other neighborhood cleanups.
	Sarasota County	Implement street sweeping programs within the jurisdictional area and properly dispose of the collected material. Effective the date of the permit (1-1-95).	Sweep streets.	Yes	County employees and contractors swept 5,964 miles in 2000. Disposal was to the landfill.	On a quarterly cycle, 930 miles of residential streets were swept, totaling 3,720 miles annually. 348 curb miles of rural roads were swept.

PROGRAM ELEMENT	PERMITTEE	REQUIREMENT	ACTIVITY SCHEDULE			COMMENTS
			Activities Required by SWMP	Complied With	Activities Accomplished During Calendar Year	
3: Operation and Maintenance of Public Streets, Roads, and Highways (continued).	City of Sarasota	Implement street sweeping programs within the jurisdictional area and properly dispose of the collected material. Effective the date of the permit (1-1-95).	Sweep streets.	Yes	The City operates three sweepers daily and will continue the same level of service. Last year 1900 tons were removed from 225 miles of residential and 36 miles of commercial streets. This material was brought to the landfill.	
	Sarasota County & City of Sarasota	Provide the maintenance schedule for stormwater structures (i.e., catch basins) and roadside ditches. Provide in first Annual Report.	Completed in previous years.	Yes	Catch basins were cleaned by request. Grates were cleaned during and after storm events. Ditches were cleaned by request. Weirs were cleaned and maintained on a schedule, and as needed.	
	Sarasota County & City of Sarasota	Perform scheduled maintenance on catch basins, grates, and other stormwater structures and roadside ditches and properly dispose of accumulated sediments. Maintain an internal log documenting maintenance activities. Effective date of permit (1-1-95).	Maintain stormwater systems.	Yes	The maintenance schedule was followed. Appropriate disposal was continued. Refer to Appendix A.	

PROGRAM ELEMENT	PERMITTEE	REQUIREMENT	ACTIVITY SCHEDULE			COMMENTS
			Activities Required by SWMP	Complied With	Activities Accomplished During Calendar Year	
3: Operation and Maintenance of Public Streets, Roads, and Highways (continued)	Sarasota County	As described in Part II.3.A. on page 7 of the permit, develop practices to reduce polluted discharges to the MS4 from road repair, and all municipal equipment yards and maintenance shops that support road maintenance activities. After development, include a summary of the practices in the subsequent Annual Report for incorporation into the permit. Within 12 months of the effective date of the permit (1-1-96).	Completed in previous years.	Yes	The BMP practices reported in the Annual Report for Year One were continued.	
	City of Sarasota	As described in Part II.3.A. on page 7 of the permit, develop practices to reduce polluted discharges to the MS4 from road repair, and all municipal equipment yards and maintenance shops that support road maintenance activities. After development, include a summary of the practices in the subsequent Annual Report for incorporation into the permit. Within 12 months of the effective date of the permit (1-1-96).	Completed in previous years.	Yes	The Public Works Business Center continued following the manual of BMP practices reported in the Annual Report for Year One.	
	Sarasota County	Implement developed practices to reduce to the MEP pollutants from road repair and municipal yards. Within 24 months of permit (1-1-97).	Implement BMPs.	Yes	The BMPs reported in the Annual Report for Year One continued to be implemented.	
	City of Sarasota	Implement developed practices to reduce to the MEP pollutants from road repair and municipal yards. Within 24 months of permit (1-1-97).	Implement BMPs.	Yes	The BMPs reported in the Annual Report for Year One continued to be implemented.	The City uses best management practices to minimize the discharge of pollutants. The City's equipment yard and shop are inspected by the County.

Summary Table for SWMP Activities

Section 3.4 - Flood Management

PROGRAM ELEMENT	PERMITTEE	REQUIREMENT	ACTIVITY SCHEDULE			COMMENTS
			Activities Required by SWMP	Complied With	Activities Accomplished During Calendar Year	
4: Ensure Flood Control Projects Comply with State Storm Water Quality Requirements	Sarasota County & City of Sarasota	Develop a priority list and construction schedule for the retrofit projects recommended by the basin master studies completed to date. Within 12 months of permit (1-1-96).	Completed in previous years.	Yes	Ongoing.	
	Sarasota County & City of Sarasota	Include a copy of the prioritized list and construction schedule in the Annual Report for incorporation into the permit. Provide updates to this list in future annual reports as additional master basin studies are completed. Within 12 months of permit (1-1-96).	Update list in Annual Report.	Yes	The Capital Improvement Program schedule for the beginning of Fiscal Year 2000 is included as Appendix B.	Capital improvement projects continued. In 2000, 8 were completed, 4 were started, and 10 were in design.

Summary Table for SWMP Activities

Section 3.5 - Municipal Facilities

PROGRAM ELEMENT	PERMITTEE	REQUIREMENT	ACTIVITY SCHEDULE			COMMENTS
			Activities Required by SWMP	Complied With	Activities Accomplished During Calendar Year	
5: Identification, Monitoring, and Control of Discharges from Municipal Waste Treatment, Storage, or Disposal Facilities Not Covered by a NPDES Storm Water Permit.	Sarasota County & City of Sarasota	Develop a program to evaluate, through inspections and monitoring, the municipally operated solid waste transfer stations, maintenance and storage yards for waste transportation fleets, POTWs and sludge application and/or disposal sites. The goals of the evaluation program shall be to identify these facilities, determine the necessary control measures and procedures to be employed at each, and administer an appropriate implementation schedule. After developing the evaluation program, submit a program summary in the subsequent Annual Report for incorporation into the permit. Within 30 months of the effective date of the permit (7-1-97).	Completed in previous years.	Yes	The program summary was included in the Annual Report for Year Three.	
	Sarasota County & City of Sarasota	Implement developed program to reduce pollutants in stormwater discharges to the MEP and shall not cause or contribute to violations of State water quality standards of the receiving stream from these facilities. Within 36 months of permit (1-1-98).	Inspect.	Yes	Inspections of solid waste, POTW, residuals, and other municipal facilities were continued by Pollution Control and Hazardous Waste Management.	All sites were regulated by EPA, DEP, and/or the County.

Summary Table for SWMP Activities

Section 3.6 - Pesticides, Herbicides, and Fertilizers

PROGRAM ELEMENT	PERMITTEE	REQUIREMENT	ACTIVITY SCHEDULE			COMMENTS
			Activities Required by SWMP	Complied With	Activities Accomplished During Calendar Year	
6: Control of Pollutants Related to Application of Pesticides, Herbicides, and Fertilizers.	Sarasota County & City of Sarasota	Provide the details, for the incorporation into the permit, of the specific public education programs designed to encourage the public to reduce their use of pesticides, herbicides and fertilizers. Provide in the first Annual Report.	Completed in previous years.	Yes	Details were reported in the Annual Report for Year One.	
	Sarasota County & City of Sarasota	Implement the public education programs. Effective date of permit (1-1-95).	Educate.	Yes	The Florida House continued to encourage reductions in use of pesticides, herbicides, and fertilizers.	Florida Yards and Neighborhoods. County Integrated Pest Management.
	Sarasota County & City of Sarasota	Evaluate current training requirements and certification procedures for employees who handle pesticides, herbicides and fertilizer. After completing the evaluation, include a summary of the results in the subsequent Annual Report for incorporation into the permit. Within 24 months of the effective date of the permit (1-1-97).	Completed in previous years.	Yes	Completed in previous years.	
	Sarasota County & City of Sarasota	Implement any revised procedures for the training and certification of these employees. As necessary - Within 36 months of the effective date of the permit (1-1-98).	Continue program from previous years.	Yes	Applicators are either certified or directly supervised by a certified person. Certification is maintained through training courses, with CEUs.	Chapter 388 F.S. and 10D-54 allow supervision of up to 15 trained people by licensed persons. Mosquito Management is inspected annually by DACS and semiannually by DEP.
	Sarasota County & City of Sarasota	Require evidence of proper certification and licensing for all applicators contracted to apply pesticides, herbicides and fertilizers on municipal property. Effective date of the permit (1-1-95).	Continue program from previous years.	Yes	Applicators are either certified or directly supervised by a certified person. Certification is maintained through training courses, with CEUs.	Cary Clark has the Certified Pesticide Operator license for the City of Sarasota.
	Sarasota County & City of Sarasota	Develop a program with procedures to minimize the use of pesticides, herbicides, and fertilizers and to properly store and mix these products. The program developed should also consider planning assistance and promoting voluntary use of native Florida plantings and slow-release fertilizers. After development, include a summary of the procedures in the subsequent Annual Report for incorporation into the permit. Within 24 months of the effective date of the permit (1-1-97).	Completed in previous years.	Yes	Completed in previous years.	
	Sarasota County & City of Sarasota	Employ the program procedures to minimize the use of pesticides, herbicides, and fertilizers and to properly store and mix these products. Within 36 months of the effective date of the permit (1-1-98).	Continue program from previous years.	Yes	The IPM Program addressed these issues. Biological and mechanical pest control minimized the use of pesticides.	The City of Sarasota's policy is to apply the least toxic chemical available for a particular use.

Summary Table for SWMP Activities

Section 3.7 - Illicit Discharges and Improper Disposal

PROGRAM ELEMENT	PERMITTEE	REQUIREMENT	ACTIVITY SCHEDULE			COMMENTS
			Activities Required by SWMP	Complied With	Activities Accomplished During Calendar Year	
7a: Illicit Discharges and Improper Disposal. Inspections, ordinances, and enforcement measures.	Sarasota County & City of Sarasota	Complete the assessment of non-stormwater discharges allowed to be discharged to the MS4 as detailed on page 9 of the permit. After completing the assessment, include a summary of the results in the subsequent Annual Report for incorporation into the permit. Within 18 months of the effective date of the permit (7-1-96).	Completed in previous years.	Yes	The list of 20 non-stormwater discharges remained unchanged from the list in the Annual Report for Year Three.	
	Sarasota County & City of Sarasota	Develop an inspection program to enforce ordinances, which prohibit illicit connections and illegal dumping into the MS4. After development, include a summary of the inspection program in the subsequent Annual Report for incorporation into the permit. Within 30 months of the effective date of the permit (7-1-97).	Completed in previous years.	Yes	Completed in previous years.	
	Sarasota County & City of Sarasota	Implement an inspection program to enforce ordinances, which prohibit illicit connections and illegal dumping into the MS4. Maintain an internal log documenting inspections and enforcement actions performed and provide a summary of these reports in each Annual Report. Within 36 months of the effective date of the permit (1-1-98).	Inspect and keep records.	Yes	Inspection, enforcement, and internal log recordkeeping was continued.	Pollution Control investigated and resolved 744 incidents, many involving illicit discharges to the MS4. Refer to Appendix C for investigation logs.
	Sarasota County	Provide photocopies of signed adopted stormwater ordinances as identified in Table II.A.7.a.(3) on page 10 of the permit. Provide in first Annual Report.	Completed in previous years.	Yes	Completed in previous years.	The stormwater regulatory language from Ordinance No. 93-038 is currently part of Ordinance No. 96-020, as amended.
	City of Sarasota	Amend ordinances as identified in Table II.A.7.a.(4) on page 11 of the permit to reflect correct citation for "industrial activity" {40CFR 122.26(b)(14)}. Include a copy of the amended ordinances in the subsequent Annual Report for incorporation into the permit. Within 12 months of the effective date of the permit (1-1-96).	Completed in previous years.	Yes	The City gave the County authority, via Resolution No. 93-685, to enforce County Ordinance No. 93-038 within the City's jurisdictional boundaries. The contents of County Ordinance No. 93-038 were included in County Ordinance No. 96-020, as amended.	

PROGRAM ELEMENT	PERMITTEE	REQUIREMENT	ACTIVITY SCHEDULE			COMMENTS
			Activities Required by SWMP	Complied With	Activities Accomplished During Calendar Year	
7b: Illicit Discharges and Improper Disposal. Field Screening.	Sarasota County & City of Sarasota	Conduct field screening of the MS4 for illicit discharges and improper disposal as shown in Table II.A.7.b. on page 12 of this permit. Collect inventory information on outfalls, and on portions of the MS4 not mapped and update a database on an ongoing basis. Maintain an internal log documenting the results of all field screening performed. At least 1/3 of Grid Areas Screened in Permit Years Three, Four and Five with Entire MS4 screened once every five years.	Entire MS4 screened once every five years.	Yes	265 outfalls in the City and County were re-inspected. 37 new outfalls were identified and inspected. Outfalls at 120 new developments were inspected. The internal log was updated.	Field inspections included photos and sampling as needed. Refer to Appendix D for a tabulation of inspections. Very few illicit discharges were discovered by implementing this permit element.

PROGRAM ELEMENT	PERMITTEE	REQUIREMENT	ACTIVITY SCHEDULE			COMMENTS
			Activities Required by SWMP	Complied With	Activities Accomplished During Calendar Year	
7c: Illicit Discharges and Improper Disposal. Investigation of Suspected Illicits and/or Improper Disposal.	Sarasota County & City of Sarasota	Develop standard investigative procedures to identify and terminate the sources of illicit connections or discharges to the MS4. After development, include a summary of the investigative procedures in the subsequent Annual Report for incorporation into the permit. Within 24 months of the effective date of the permit (1-1-97).	Completed in previous years.	Yes	Standard investigative procedures were included in the Annual Report for Year Four (1998).	
	Sarasota County & City of Sarasota	Implement standard investigative procedures to identify and terminate the sources of illicit connections or discharges to the MS4. Within 30 months of the effective date of the permit (7-1-97).	Continue program from previous years.	Yes	Standard investigative procedures continued to be used for complaint investigation, high-risk facility inspections, and outfall field screening.	

PROGRAM ELEMENT	PERMITTEE	REQUIREMENT	ACTIVITY SCHEDULE			COMMENTS
			Activities Required by SWMP	Complied With	Activities Accomplished During Calendar Year	
7d: Illicit Discharges and Improper Disposal. Spill Prevention and Response	Sarasota County	Provide a copy of the applicable portions of Sarasota County's Hazardous Materials Emergency Plan which effectively mitigate potential pollutant discharges to surface waters. Provide in first Annual Report.	Completed in previous years.	Yes	A copy of the plan was included in the Annual Report for Year Five.	
	City of Sarasota	Adopt Sarasota County's Hazardous Materials Emergency Plan, FDOT's Emergency Operations Procedures, or a comparable plan and procedures which effectively mitigate potential pollutant discharges to surface waters. Within 12 months of the effective date of the permit (1-1-96).	Completed in previous years.	Yes	As reported in the Annual Report for Year One, the City and County Fire Departments merged. Therefore, Sarasota County's Hazardous Materials Emergency Plan applies within the City.	

PROGRAM ELEMENT	PERMITTEE	REQUIREMENT	ACTIVITY SCHEDULE			COMMENTS
			Activities Required by SWMP	Complied With	Activities Accomplished During Calendar Year	
7e: Illicit Discharges and Improper Disposal. Public Notification.	Sarasota County & City of Sarasota	Develop a program to promote, publicize, and facilitate public reporting of the presence of illicit discharges and improper disposal of materials to the MS4. After development, include a summary of the public programs in the subsequent Annual Report for incorporation into the permit. Within 30 months of the effective date of the permit (7-1-97).	Completed in previous years.	Yes	Completed in previous years.	
	Sarasota County & City of Sarasota	Implement public reporting program. Within 36 months of the effective date of the permit (1-1-98).	Publicize illicit reporting.	Yes	Pollution Control continued to promote the 24-hour on-call telephone number. Presentations to organizations continued.	
	Sarasota County & City of Sarasota	Maintain a citizen complaint log documenting all reports of illicit discharges and what actions were taken to investigate and resolve the problem. Include a summary of this log in each Annual Report. Within 36 months of the effective date of the permit (1-1-98).	Inspect and keep records.	Yes	Pollution Control investigated and resolved 744 incidents, many involving discharges to the MS4. Hazardous Waste completed 59 such investigations. The summary of the logs is in Appendix C.	Pollution Control investigations resulted in 149 enforcement actions (including voluntary compliance following notification of a violation). Hazardous Waste Management investigations resulted in 3 enforcement actions.

PROGRAM ELEMENT	PERMITTEE	REQUIREMENT	ACTIVITY SCHEDULE			COMMENTS
			Activities Required by SWMP	Complied With	Activities Accomplished During Calendar Year	
7f: Illicit Discharges and Improper Disposal. Oils, Toxics and Household Hazardous Waste Control	Sarasota County & City of Sarasota	Support and promote on a regular basis the six oil recycling site locations within Sarasota County and the two permanent collection centers for household hazardous waste materials. Continue Amnesty Days program. Document the total amount of household hazardous waste materials collected. Effective date of permit (1-1-95).	Collect wastes and keep records.	Yes	The Countywide curbside used oil collection program continued, with two used oil recycling stations still available to the public. CESQG collections were conducted one day per month. Two permanent household hazardous materials collection centers were open 2-3 days per week, including weekends. Household Chemical Collections (Amnesty Days) were conducted nine days per year.	In 2000, 23,510 gallons of used oil were collected and recycled; 389,461 pounds of household and CESQG hazardous waste were collected.
	Sarasota County & City of Sarasota	Actively promote and support a voluntary stenciling program for all storm sewer inlets that discharge directly or indirectly into surface waters. Within 12 months of the effective date of the permit (1-1-96).	Stencil drains.	Yes	Storm drains were placarded with the message: Dumping Here Pollutes Our Bay.	Placards replaced stenciling because the placards were more durable and easier to install. 622 drains were placarded.

PROGRAM ELEMENT	PERMITTEE	REQUIREMENT	ACTIVITY SCHEDULE			COMMENTS
			Activities Required by SWMP	Complied With	Activities Accomplished During Calendar Year	
7g: Illicit Discharges and Improper Disposal. Limitation of Sanitary Sewer Seepage.	Sarasota County	Develop procedures to limit the infiltration of sanitary sewer seepage into the MS4, in areas where wastewater infiltration is suspected. After development, include a summary of the procedures in the subsequent Annual Report for incorporation into the permit. Within 30 months of the effective date of the permit (7-1-97).	Completed in previous years.	Yes	Completed in previous years.	
	City of Sarasota	Develop procedures to limit the infiltration of sanitary sewer seepage into the MS4, in areas where wastewater infiltration is suspected. After development, include a summary of the procedures in the subsequent Annual Report for incorporation into the permit. Within 30 months of the effective date of the permit (7-1-97).	Completed in previous years.	Yes	Completed in previous years.	
	Sarasota County	Implement developed procedures to limit the infiltration of sanitary sewer seepage into the MS4. Within 36 months of the effective date of the permit (1-1-98).	Continue program from previous years.	Yes	Procedures continued to be implemented.	
	City of Sarasota	Implement developed procedures to limit the infiltration of sanitary sewer seepage into the MS4. Within 36 months of the effective date of the permit (1-1-98).	Continue program from previous years.	Yes	Procedures continued to be implemented.	
	Sarasota County & City of Sarasota	Advise appropriate utility owner of violation if constituents common to wastewater contamination are discovered in the MS4 during dry-weather field screening. Effective date of permit (1-1-95).	Continue program from previous years.	Yes	Pollution Control advised appropriate utilities of all reported discharges to the MS4.	No sanitary sewer seepage was found during dry-weather field screening.
	Sarasota County & City of Sarasota	Identify areas served by septic tanks. Advise appropriate State Agency of violation if constituents common to wastewater contamination due to malfunctioning septic systems are discovered in the MS4 during dry weather field screening. Within 12 months of the effective date of the permit (1-1-96).	Continue program from previous years.	Yes	Pollution Control notified the Department of Health of every reported septic system incident. No septic system seepage was found during dry weather field screening.	Areas served by septic systems were identified in the Preliminary Report on County Water and Sewer Service in Sarasota County by Post, Buckley, Schuh, & Jernigan (1994).

Summary Table for SWMP Activities

Section 3.8 - High Risk Industrial Facilities

PROGRAM ELEMENT	PERMITTEE	REQUIREMENT	ACTIVITY SCHEDULE			COMMENTS
			Activities Required by SWMP	Complied With	Activities Accomplished During Calendar Year	
8a: Industrial and High Risk Runoff. Identification of Priorities and Procedures for Inspections.	Sarasota County & City of Sarasota	Develop an inventory of all existing high-risk facilities discharging into the MS4. This inventory shall identify the outfall and surface waterbody into which each high-risk facility drains. Within 24 months of the effective date of the permit (1-1-97).	Completed in previous years.	Yes	Pollution Control tracks permits issued by DEP and EPA, as well as facilities found during inspections that are subject to Multi-Sector Permits.	The facility inventory is updated in part, by using the annual county Occupational License list.
	Sarasota County & City of Sarasota	Based on historical information and available monitoring and screening data, prioritize the identified high-risk facilities. Within 24 months of the effective date of the permit (1-1-97).	Completed in previous years.	Yes	Pollution Control inspectors prioritize their inspection activities based on local knowledge, cooperation with DEP, and awareness of DEP and EPA permits.	
	Sarasota County & City of Sarasota	Develop procedures for inspecting high-risk facilities and establish an inspection schedule. After development, include a summary of the procedures and inspection schedule in the subsequent Annual Report for incorporation into the permit. Within 24 months of the effective date of the permit (1-1-97).	Completed in previous years.	Yes	The inspection forms were included in the Annual Report for Year Three. Standard investigative procedures and permitting manual were included in the Annual Report for Year Four.	
	Sarasota County & City of Sarasota	Begin inspections of identified high-risk facilities. Maintain an internal log documenting the results of the inspections performed. Within 36 months of the effective date of the permit (1-1-98).	Inspect and keep records.	Yes	564 industrial facility inspections were conducted by Pollution Control. Several prohibited discharges were found and eliminated. The internal log was updated and is in Appendix E.	
	Sarasota County & City of Sarasota	Maintain a list of all industrial stormwater sources discharging to the MS4 and update in Annual Reports. Effective date of permit (1-1-95).	Continue program from previous years.	Yes	The lists were updated.	EPA and DEP issue regulatory permits to some industrial sources. Facilities inspected by Pollution Control were evaluated for applicability of EPA Multi-Sector Permits.

PROGRAM ELEMENT	PERMITTEE	REQUIREMENT	ACTIVITY SCHEDULE			COMMENTS
			Activities Required by SWMP	Complied With	Activities Accomplished During Calendar Year	
8b: Industrial and High Risk Runoff. Monitoring for High Risk Industries.	Sarasota County & City of Sarasota	Develop a monitoring (or self-monitoring) program for high-risk industrial facilities. Include a description of the specific enforcement steps to be taken to require compliance with local stormwater ordinances if violations are identified. After development, include a summary of the monitoring program in the subsequent Annual Report for incorporation into the permit. Within 24 months of the effective date of the permit (1-1-97).	Completed in previous years.	Yes	Completed in previous years.	
	Sarasota County & City of Sarasota	Implement the monitoring program for high-risk industrial facilities. Within 36 months of the effective date of the permit (1-1-98).	Monitor.	Yes	Facilities with EPA or DEP permits conducted monitoring as required by permit conditions.	Pollution Control evaluates high-risk facilities subject to multi-sector permits, and provides information to subject businesses. Monitoring may be a part of the EPA Multi-Sector Permit. DEP may also require monitoring for Industrial Waste permitted facilities.

Summary Table for SWMP Activities

Section 3.9 - Construction

PROGRAM ELEMENT	PERMITTEE	REQUIREMENT	ACTIVITY SCHEDULE			COMMENTS
			Activities Required by SWMP	Complied With	Activities Accomplished During Calendar Year	
9a. Construction Site Runoff. Site Planning & Structural and Non-Structural Controls.	Sarasota County	Review erosion and sediment control requirements to determine modifications necessary to correlate with SWFWMD's requirements and EPA's NPDES Construction Activity General Permit. Summarize the necessary modifications in the subsequent Annual Report for incorporation into the permit. Within 12 months of the effective date of the permit (1-1-96).	Completed in previous years.	Yes	Requirements and modifications were reported in previous Annual Reports.	
	City of Sarasota	Review erosion and sediment control requirements to determine modifications necessary to correlate with SWFWMD's requirements and EPA's NPDES Construction Activity General Permit. Summarize the necessary modifications in the subsequent Annual Report for incorporation into the permit. Within 12 months of the effective date of the permit (1-1-96).	Completed in previous years.	Yes	Requirements and modifications were reported in previous Annual Reports.	
	Sarasota County	Incorporate the necessary modifications to the erosion and sediment control requirements. Within 36 months of the effective date of the permit (1-1-98).	Completed in previous years.	Yes	The Land Development Regulations underwent major revisions during 2000. It is anticipated that the revisions will be adopted by the County Commission in 2001.	New Land Development Regulations became effective May 7, 2001
	City of Sarasota	Incorporate the necessary modifications to the erosion and sediment control requirements. Within 36 months of the effective date of the permit (1-1-98).	Completed in previous years.	Yes	Pertinent revisions to the LDR will be reported in the next annual report.	
	Sarasota County	In land development regulations, incorporate guidelines and recommendations for reducing the amount of sediment leaving construction sites. Within 36 months of the effective date of the permit (1-1-98).	Completed in previous years.	Yes	LDR revisions relative to erosion and sediment control will be implemented following Commission adoption.	
	City of Sarasota	In land development regulations, incorporate guidelines and recommendations for reducing the amount of sediment leaving construction sites. Within 36 months of the effective date of the permit (1-1-98).	Completed in previous years.	Yes	City Code, Chapter 29.5 Site Improvements - Engineering Design Criteria, subsection 29.5-8., addresses erosion and siltation control.	

PROGRAM ELEMENT	PERMITTEE	REQUIREMENT	ACTIVITY SCHEDULE			COMMENTS
			Activities Required by SWMP	Complied With	Activities Accomplished During Calendar Year	
9a. Construction Site Runoff. Site Planning & Structural and Non-Structural Controls (continued)	Sarasota County	Track construction projects required to install erosion and sediment controls. Document the installation, maintenance, and effectiveness of the controls. Integrate these records with the education program for training site contractors. Within 18 months of the effective date of the permit (7-1-96)	Inspect and keep records.	Yes	Land Development Services and Pollution Control included BMPs in reviews of construction documents. Resource Permitting required BMPs at sites. The log of Land Development Services inspections is in Appendix F.	As previously reported, construction plans include references to erosion and sediment control measures in the plan details and general/specific notes. An Erosion Control Best Management Practices Plan, including locating the proposed controls, is required for all projects reviewed under the Land Development Regulations.
	City of Sarasota	Track construction projects required to install erosion and sediment controls. Document the installation, maintenance, and effectiveness of the controls. Integrate these records with the education program for training site contractors. Within 18 months of the effective date of the permit (7-1-96)	Inspect and keep records.	Yes	As reported in the Annual Reports for years two and three, inspectors with the City Engineer's Office routinely check for compliance with BMPs and require improvements as necessary.	The City requires copies of NOI notifications to the EPA and copies of the Pollution Prevention Plans for every project over 5 acres.

PROGRAM ELEMENT	PERMITTEE	REQUIREMENT	ACTIVITY SCHEDULE			COMMENTS
			Activities Required by SWMP	Complied With	Activities Accomplished During Calendar Year	
9b: Construction Site Runoff. Inspection and Enforcement.	Sarasota County	Review existing inspection policies and code enforcement programs to first identify all agencies conducting site inspections and then to determine which agency is responsible for issuing enforcement actions for which code violations. Summarize the results and include in the subsequent Annual Report for incorporation into the permit. Within 24 months of the effective date of the permit (1-1-97).	Completed in previous years.	Yes	The summary was included in the Annual Report for Year Three.	
	City of Sarasota	Review existing inspection policies and code enforcement programs to first identify all agencies conducting site inspections and then to determine which agency is responsible for issuing enforcement actions for which code violations. Summarize the results and include in the subsequent Annual Report for incorporation into the permit. Within 24 months of the effective date of the permit (1-1-97).	Completed in previous years.	Yes	The City Engineer's office inspects and requires compliance with erosion control measures.	
	Sarasota County	Train inspectors (regardless of specialty) who are likely to be on-site during earth moving activities in erosion control techniques. One inspector per year.	Train one inspector per year.	Yes	28 County employees were trained and passed the exam for the DEP Erosion & Sedimentation certification offered by the American Public Works Academy at the Sarasota Vocational Technical Institute.	DEP Sediment and Erosion Control Training was included in Suncoast Public Works Academy curriculum, which is taught by trained municipal employees.
	City of Sarasota	Train inspectors (regardless of specialty) who are likely to be on-site during earth moving activities in erosion control techniques. One inspector per year.	Train one inspector per year.	Yes	3 City employees were trained and passed the exam for the DEP Erosion & Sedimentation certification offered by the American Public Works Academy at the Sarasota Vocational Technical Institute.	DEP Sediment and Erosion Control Training was included in Suncoast Public Works Academy curriculum, which is taught by trained municipal employees.
	Sarasota County	Implement the use of an erosion and sediment control checklist for all inspectors. Include verification that construction sites subject to the NPDES Storm Water Regulations have NPDES permit coverage and a Storm Water Pollution Prevention Plan on site. Include the checklist in the subsequent Annual Report for incorporation into the permit. Within 24 months of the effective date of the permit (1-1-97).	Completed in previous years.	Yes	The BMP plan sheets are a part of the approved construction plans. Land Development inspectors make inspection of BMPs a regular part of the inspection. The specific checklist is therefore incorporated into the BMP plan sheets.	

PROGRAM ELEMENT	PERMITTEE	REQUIREMENT	ACTIVITY SCHEDULE			COMMENTS
			Activities Required by SWMP	Complied With	Activities Accomplished During Calendar Year	
9b: Construction Site Runoff. Inspection and Enforcement (continued)	City of Sarasota	Implement the use of an erosion and sediment control checklist for all inspectors. Include verification that construction sites subject to the NPDES Storm Water Regulations have NPDES permit coverage and a Storm Water Pollution Prevention Plan on site. Include the checklist in the subsequent Annual Report for incorporation into the permit. Within 24 months of the effective date of the permit (1-1-97).	Completed in previous years.	Yes	Erosion/siltation permits function as checklists and were included with documents submitted during the permit application.	The City requires copies of NOI notifications to the EPA and copies of the Pollution Prevention Plans for every project over 5 acres.
	Sarasota County	Develop a program to inspect construction projects for compliance with local stormwater ordinances and/or local permits. Within 24 months of the effective date of the permit (1-1-97).	Completed in previous years.	Yes	The program was developed in previous years.	
	City of Sarasota	Develop a program to inspect construction projects for compliance with local stormwater ordinances and/or local permits. Within 24 months of the effective date of the permit (1-1-97).	Completed in previous years.	Yes	City Engineering inspectors check for water quality violations during inspections for compliance with City Codes.	
	Sarasota County	Implement program developed to inspect construction projects for compliance with local stormwater ordinances and/or local permits. Within 36 months of the effective date of the permit (1-1-98).	Inspect.	Yes	Pollution Control investigated referrals from other agencies about violations of the Pollution Control Code and 62-302, F.A.C., Surface Water Quality Standards.	
	City of Sarasota	Implement program developed to inspect construction projects for compliance with local stormwater ordinances and/or local permits. Within 36 months of the effective date of the permit (1-1-98).	Inspect.	Yes	City inspectors require corrections or refer water quality violations to Pollution Control, DEP, or SWFWMD.	

PROGRAM ELEMENT	PERMITTEE	REQUIREMENT	ACTIVITY SCHEDULE			COMMENTS
			Activities Required by SWMP	Complied With	Activities Accomplished During Calendar Year	
9c: Construction Site Runoff. Site Operator Training.	Sarasota County & City of Sarasota	Implement an annual NPDES workshop for design professionals, land developers, inspectors, and contractors, including earth-moving contractors. Topics to include are measures to reduce pollutants from sites, awareness of the NPDES program requirements for construction activities, and solutions to erosion and sediment problems found by inspectors during construction. Within 24 months of the effective date of the permit (1-1-97).	Educate.	Yes	The Suncoast Public Works Academy scheduled two training classes for contractors in August and December 2000. The Suncoast Public Works Academy offered the DEP erosion and sediment control training to contractors during 2000. Approximately 20 site operators attended. Participation in the test for certification was minimal, primarily because the course is not eligible for continuing education credits	Due to low turnout the second offering was cancelled and rescheduled for July 2001. Efforts are underway to solicit contractor support for the program.
	Sarasota County & City of Sarasota	Evaluate the feasibility of an erosion and sediment control certification program for construction site operators (contractors and developers), plan reviewers, and inspectors that work on sites that discharge to the MS4. Upon conclusion of the evaluation, include a summary of the findings in the subsequent Annual Report for incorporation into the permit. Within 30 months of the effective date of the permit (1-1-98).	Completed in previous years.	Yes	Completed in previous years.	
	Sarasota County & City of Sarasota	If the certification program is deemed feasible, implement program for construction site operators, plan reviewers, and inspectors. Within 36 months of the effective date of the permit (7-1-98).	Completed in previous years.	Yes	The DEP erosion and sediment control course is offered at the Suncoast Public Works Academy. The training was held three times during 2000 with approximately 20 attendees in each. Attendees included municipal employees/inspectors and contractors/site operators.	
	Sarasota County	Develop a procedure to notify building permit applicants in developments which, because of the amount of land area disturbed, are subject to the NPDES stormwater regulations of their application responsibilities under the NPDES permitting program for construction site runoff. After development, include a summary of the procedures in the subsequent Annual Report for incorporation into the permit. Within 24 months of the effective date of the permit (1-1-97).	Completed in previous years.	Yes		Sarasota County will modify the language on plan review forms to reflect NPDES Phase II regulations when the new rules are implemented.

PROGRAM ELEMENT	PERMITTEE	REQUIREMENT	ACTIVITY SCHEDULE			COMMENTS
			Activities Required by SWMP	Complied With	Activities Accomplished During Calendar Year	
9c: Construction Site Runoff. Site Operator Training (continued).	City of Sarasota	Develop a procedure to notify building permit applicants in developments which, because of the amount of land area disturbed, are subject to the NPDES stormwater regulations of their application responsibilities under the NPDES permitting program for construction site runoff. After development, include a summary of the procedures in the subsequent Annual Report for incorporation into the permit. Within 24 months of the effective date of the permit (1-1-97).	Completed in previous years.	Yes	Completed in previous years.	
	Sarasota County	Implement developed procedures to notify building permit applicants in developments which, because of amount of land area disturbed, are subject to the NPDES stormwater regulations of their application responsibilities under the NPDES permitting program for construction site runoff. Within 30 months of the effective date of the permit (7-1-97).	Notify builders.	Yes	During plans review, builders were notified about NPDES permits needed for sites over five acres.	Sarasota County will modify the language on plan review forms to reflect NPDES Phase II regulations when the new rules are implemented.
	City of Sarasota	Implement developed procedures to notify building permit applicants in developments which, because of amount of land area disturbed, are subject to the NPDES stormwater regulations of their application responsibilities under the NPDES permitting program for construction site runoff. Within 30 months of the effective date of the permit (7-1-97).	Notify builders.	Yes	During plans review, builders were notified about NPDES permits needed for sites over five acres.	
	Sarasota County & City of Sarasota	Conduct presentations to local professional organizations, which are associated with the construction industry to discuss proper construction site management for water quality. Ongoing.	Educate.	Yes	Water quality issues are discussed with design professionals at appropriate times during plan review (private development) and pre-bid and pre-construction meetings (municipal projects).	

Narrative Reports for SWMP Activities

Section 4.1 - Maintenance of Structural Controls

Ponds and Lakes - All City, County, and State ponds continued to be mowed, treated, and to have litter removed monthly. All underdrains were maintained annually. Fence repair and other maintenance were completed as required. Debris was properly disposed of at a lined landfill. Maintenance activities increased through additional contracts for mowing, ditch cleaning, and pond maintenance. Inspectors continued to check the side slopes, inlets, and outlets for damage or sediment buildup. A certified contractor applied all herbicides and a trained inspector reviewed the work.

Wet Retention Systems - Ninety-eight County wet retention systems were inspected monthly, for herbicide treatments and mowing, totaling 2,356 inspections in 2000. Sixty-two County dry ponds were inspected and mowed monthly, totaling 744 inspections annually. The City of Sarasota had 32 wet retention areas inspected and maintained monthly, totaling 768 inspections annually. The City had three dry ponds inspected and maintained monthly, totaling 36 inspections annually.

Weirs and Flow Control Devices - Litter control and vegetation removal were done as required on 81 weirs and flow control devices. Annual structural inspections included checking major defects, erosion, sedimentation, bleed-down devices, and underdrains. Maintenance schedules were rearranged to address deficiencies identified in the inspector's reports.

Channels - Maintenance included debris removal, noxious vegetation removal, sediment removal, and restabilization of slopes. These tasks were accomplished both in-house and by contractors. Sarasota County had 81 annual inspections of channel control structures in 2000.

All County canals (289 miles) were inspected annually, but only 197 miles were maintained annually. The City of Sarasota had eight control structures inspected once each in 2000. Twenty of the 27 miles of City canals were hand cleared and inspected, all 37 canals were treated and inspected; all travelways and slopes were mowed monthly by contract and inspected.

Private Stormwater Systems - City and County

The inventory of residential subdivisions and commercial parcels receiving Storm Water Assessment credits is regularly updated to account for new development. The credit is applied to developments that operate and maintain the private stormwater management system serving a specific area. The Sarasota County Storm Water Ordinance No. 94-066 and supporting Resolutions require inspections of these credited systems to assure appropriate application of the credits. During inspections, inspectors checked the condition of skimmers, outfall structures, sediment sumps, slope stabilization, underdrain/filtration systems, and other above ground features or otherwise visible features. As needed, existing conditions were compared to construction drawings or as-builts.

The Ordinance calls for owner notification if a private stormwater system does not pass inspection. Notification includes a 90-day time frame to perform remedial action to bring the system into compliance. Failure to do so results in the revocation of the Stormwater Assessment credits. During 2000, 65 private systems were inspected under this program. It was not necessary to revoke the credits for any of these private systems.

Training - City and County

County employees attended the 2000 Florida Association of Storm Water Utilities annual conference. Representatives from the County and City routinely attended the Florida Storm Water Programs Association meetings. Some County employees are members of the International Erosion Control Society.

Narrative Reports for SWMP Activities

Section 4.2 - Development Planning Procedures

Basin Master Planning - City and County

Sarasota County continued the Basin Master Planning program; approving new studies and updating previously completed studies. The newly approved studies, covering North Creek and Woodmere Creek, were adopted by the Board of County Commissioners during 2000. Several other basin studies were updated to include a significant amount of detailed information. The City of Sarasota continued to participate in the Basin Master Planning process.

Table 4.2. Basin Master Plans Status.

Completed Studies	Updated Studies	Studies Underway	Future Studies
Ainger Creek	Phillippi Creek**	Business District	Deer Prairie Slough
Alligator Creek	Matheny Creek	Whitaker Bayou**	Myakka River
Big Slough	Forked Creek		Little Salt Creek
Clower Creek	North Creek		Braden River
Elligraw Bayou	Woodmere Creek		Shakett Creek
Fox Creek	Holiday Bayou		Cowpen Slough*
Hudson Bayou**	Gottfried Creek		
Catfish Creek*			
Curry Creek*			
Hatchett Creek*			
South Creek*			

* Studies completed but not yet adopted by Board of County Commissioners

** Basin located entirely or partially within the City of Sarasota

It is anticipated that the basin studies and necessary updates will be completed in 2002. Upon reaching completion of this element, the permit will require modification. Although complete, the basin studies will need to be maintained to reflect on-going development and new information as it is discovered. In addition, staff previously involved in the master planning process will be able to focus more directly on water quality issues rather than flood control.

Narrative Reports for SWMP Activities

Section 4.3 - Roadway Maintenance

Road Repair - City and County

Best management practices were used on all road repairs, including silt fences, temporary and permanent vegetative cover, and turbidity screens.

Litter Control - City and County

Keep Sarasota Beautiful coordinated 129,639 volunteer hours (3,022 volunteers) for many litter control programs, including Adopt-a-Road, park, pond, shore, and spot. Bag it in Your Car Day distributed car litterbags at car washes and fast-food restaurants. The annual Florida Coastal Cleanup coordinated 7,368 donated work hours. Two community gardens changed littered areas into beautiful, shared plots of flowers and vegetables. A third garden opened in 2001. Control your Butts collected over 82,759 cigarette butts. The Great American Cleanup coordinated 1,329 volunteers. Keep Sarasota Beautiful was very active in public education.

Municipal Maintenance Yards - City and County

Equipment yards and maintenance shops continued to minimize the discharge of pollutants by employing good housekeeping and materials handling methods. Established procedures required immediate clean up of all spills. Some wastes were recycled, others had proper disposal. All recycling and disposal contractors were required to possess the necessary authorizations and certifications to transport and handle the specific materials involved.

Narrative Reports for SWMP Activities

Section 4.4 - Flood Management

Several flood control projects were completed during 2000. Recommended by the Basin Master Plans, these projects addressed structure and street flooding level of service deficiencies. Although focused on flood control, the projects, by design, also have some water quality attributes, as well. Bank stabilization, removal of sediments, and creation of lakes and ponds undoubtedly improved downstream water quality. It is anticipated that, upon completion of the flood control projects, focus will shift to water quality issues as the main objective.

Table 4.4 Year 2000 Flood Control Projects

Completed Projects	Projects Started	Projects in Design
Sunnyside Lane	Redbug Slough	Arlington / Euclid
East Avenue	Main B	Bahia Vista / Lockwood Ridge
Hyde Park	Oakhurst Condo	Branch BA
Arlington Canal Bypass	Baywood Drive	Albee Road
Coral Lakes		Chapel Drive
Newtown Canal		St. Armands Circle
Osprey Acres		Little Five Points
State Road 776 Crossing		North Englewood Lateral
		South Creek
		Osprey / Ohio / Oak

During 2000, the County began the development of a dredging program to facilitate navigation of area waterways, independent of the sediment removal normally performed for drainage purposes. Regardless of the objective of the dredging activity, navigation or drainage, the County will focus on sediment source abatement. It is anticipated that the source abatement effort will be implemented during 2001 and be included in the next annual report.

Narrative Reports for SWMP Activities

Section 4.5 - Municipal Facilities Not Covered by a NPDES Storm Water Permit

Solid Waste Facilities - Sarasota County

All three solid waste facilities have stormwater systems that are inspected daily.

- The Central County Solid Waste Disposal Complex (CCSWDC) was opened in 1998 and was subject to the NPDES stormwater discharge requirements for municipal landfills. The Department also regulates the site.
- The Bee Ridge Landfill was closed in February 2000 but is still subject to NPDES Permit FLS0039306. The runoff from the site drains to stormwater detention ponds. The site is mowed, cleaned to grade, and maintained as needed. The Department also regulates this site.
- The former Venice Landfill was closed in 1986 and is now subject to a Department Long Term Care Permit that includes stormwater issues. The existing Jackson Road Transfer Station has a leachate control system that was deactivated in October 1998. The Department also regulates the site. This site does not have a NPDES permit.

Solid Waste Facilities - City of Sarasota

The City of Sarasota continued to contract with Browning Ferris Industries to operate a solid waste transfer facility. The facility is regulated by a NPDES multi-sector permit, the Southwest Florida Water Management District (SWFWMD), and a Department Solid Waste Transfer Station Operation Permit. Leachate is discharged to the sanitary sewer. Runoff is detained in a SWFWMD regulated stormwater pond.

Solid Waste Fleet and Equipment Maintenance and Storage Yards - Sarasota County

The fleet site is at the CCSWDC maintenance building and the runoff is controlled. All oil and fuel is kept in confined areas. A permanent storage facility is under construction.

Solid Waste Fleet and Equipment Maintenance and Storage Yards - City of Sarasota

Facilities are properly maintained.

Publicly Operated Wastewater Treatment Works (POTWs) - Sarasota County

Mineral acid tanks, fuel tanks, and hazardous substance tanks over 550 gallons are regulated and inspected by the Department. Although state rules require a visual inspection of these tanks once a month, they are actually inspected daily.

Some of the facilities have Department or SWFWMD stormwater permits that require mowing of small stormwater detention ponds. None of the POTWs have NPDES permits.

Refer to Section 4.12 of this annual report for control of sewage and effluent from facility sites and collection and distribution systems.

Publicly Operated Wastewater Treatment Works - City of Sarasota

The POTW site was operated according to a stormwater pollution prevention plan. Diesel, acid, and caustic tanks were all within secondary containment.

Wastewater Residuals Application Sites - Sarasota County

In 2000 Sarasota County had four ranch properties permitted and actively receiving applications of domestic wastewater residuals. Two additional sites were permitted and actively receiving industrial wastewater residuals. The land application site Agricultural Use Permits are issued by the Department of Environmental Protection. Sarasota County Environmental Services Pollution Control inspects the domestic wastewater residuals sites on a monthly schedule as part of the Domestic Wastewater program, while the industrial residuals sites are directly regulated by the Department.

The two south-county sites are spread with residuals generated solely by the City of Venice Wastewater Treatment Facility. The two north-county sites are spread by Elmore Environmental Services, Inc. Residuals applied to the north-county sites consist of material generated by treatment facilities owned and operated by Sarasota County Environmental Services Utilities, smaller private and franchise utilities, and out-of-county sources under contract with Elmore. Land application sites are excluded from NPDES permitting per 40 Code of Federal Regulations, 122.26(b)(14)(ix), but are inspected monthly to ensure that proper application rates, setbacks, and access restrictions for cattle and humans are met.

Wastewater Residuals Application Sites - City of Sarasota

Wastewater residuals were composted and reused as mulch; 1,500 dry tons of sewage sludge were composted. No residuals were land applied.

Wastewater Utilities Fleet and Equipment Maintenance and Storage Yards - Sarasota County

Vehicles were maintained off-site by Transit and Fleet Services. Vehicles are stored in Utilities parking lots.

Wastewater Utility Fleet and Equipment Maintenance and Storage Yards - City of Sarasota

Facilities were properly maintained.

Narrative Reports for SWMP Activities

Section 4.6 - Pesticides, Herbicides, and Fertilizers

Public Education to Encourage Reduced Use of Pesticides, Herbicides, and Fertilizers.

Community Services, Cooperative Extension Service - City and County

- Public education programs continued to encourage the reduced use of pesticides, herbicides, and fertilizers, the reduced use of landscape watering, and the design of landscapes to minimize stormwater runoff. Some specific topics included native plants, xeriscaping, slow release fertilizers, and integrated pest management (emphasizing least-toxic approaches).
- The Florida Yards and Neighborhoods program recommends using Environmental Landscape Management principles. The principles are demonstrated at the Florida House Learning Center by using innovative materials and methods to reduce energy consumption, reduce waste generation, and reduce the overall environmental impact of residential living.
- In 2000 Sarasota County Cooperative Extension Service conducted over 100 tours and welcomed 9,350 recorded visitors to the Florida House, with another 6,500 visitors estimated to have visited the landscape alone.
- Another 30,090 people received landscape assistance from Extension staff in direct outreach efforts, primarily through contact with the Extension Helpdesk and Satellite Service, and there were over 136,000 hits on the office website, which features resource conservation and Environmental Landscape Management information.
- There were 68 landscape and pesticide educational programs conducted, 171 citizens were enrolled into the Florida Yards and Neighborhoods program, and 36 achieved Certified Florida Yard status (bringing the total number of Certified Florida Yards to 134 in Sarasota County).
- There was an active outreach program to the public school system to promote the responsible use of pesticides, herbicides, and fertilizers.

- In November 2000, a new outreach program was initiated to assist condominium and homeowner associations to reduce stormwater runoff and improve stormwater quality through landscape and irrigation modifications. The pilot program targeted builders, developers, and landscape architects and encouraged the design and installation of landscapes and communities using Florida Yards principles.
- The Environmental Pest Management coordinator offered least toxic and nontoxic alternatives for pest and weed control to the County as well as the employees of the school board and cities within the County. The Integrated Pest Management (IPM) Advisory Board reviewed the programs of various departments. Reducing fertilizer runoff was also addressed.

Sarasota County Public Works - Facilities Maintenance

A staff horticulturist conducts numerous programs through the libraries and local garden clubs to educate the public on landscape practices to minimize the use of pesticides, herbicides, and fertilizers. Facilities Maintenance maintains a web page on Integrated Pest Management.

Training for Handlers of Pesticides, Herbicides, and Fertilizers - Sarasota County

Sarasota County employees and contractors whose duties include the application of pesticides and herbicides were certified by the Florida Department of Agriculture and Consumer Services (DACS) and were trained and tested by the Sarasota County Cooperative Extension Service.

Health and Human Services, Mosquito Management Services

Personnel who store, handle, and apply pesticides are state certified and/or work under supervision of a state certified applicator.

Public Works, Facilities Maintenance

Public Works Facilities Maintenance contract bid specifications require a copy of a proper DACS Pest Control license prior to bid award. The specifications do not allow pesticide applications to be subcontracted and requires a certified applicator to be part of the on-site work force. All applicators are required to be State certified and a certified applicator must be part of the on-site work crew. Restricted-use pesticides are not allowed, so the only license required is

the Limited Certification in the Commercial Landscape Maintenance category. Although all pesticide application is provided by contractual service, horticultural staff oversees the contract, provides IPM monitoring, and attends numerous CEU-granting seminars offered by the University of Florida. Ongoing training is provided monthly.

Public Works, Operations, Aquatic Plant Control Section

- The Aquatic Plant Control Section has certification, training and inspection practices very similar to those of Mosquito Management Services.
- All ten Aquatic Plant control applicators hold Department of Agriculture and Consumer Services Restricted Use Pesticide Licenses with Aquatic and Right of Way endorsements attached.
- These licenses require 24 CEUs every 4 years.

Public Works, Forestry Operations

All pesticide applicators have earned the Department of Agriculture, Limited Lawn and Ornamental Applicator's Licenses and are required to maintain them through continuing education.

Environmental Services, Resource Management Services

- Three staff members have state-certified herbicide application licenses and related CEUs.
- All herbicide application is performed by licensed employees or contractors, or under the direct supervision of a licensed applicator.
- Resource Management Services supervises the occasional herbicide applications conducted by Resource Protection Services.

Community Services, Parks and Recreation

Three Horticulture Technicians and two Arborists are certified in the public category for lawn and ornamental pest control. A new Horticulture Technician and two Arborists work under a supervisor's Florida PCO Certification for application of pesticides to lawns and ornamentals.

Workers are sent to required pesticide training sessions when available.

Training for Handlers of Pesticides, Herbicides, and Fertilizers - City of Sarasota

Applicators were properly trained.

Reduced Use and Proper Storage and Mixing of Pesticides, Herbicides, and Fertilizers - Sarasota County

Health and Human Services, Mosquito Management Services

- All pesticides are stored, applied, and disposed of according to their individual EPA-registered labels;
- Storage of pesticides is confined to the pesticide storage facility, a 40 by 60-foot building with concrete floors and a 120-gallon impervious sump;
- All application of pesticides is done in compliance with the EPA pesticides labels. Non-insecticide methods of mosquito management are used whenever practical; these methods include source reduction, predator mosquito fish distribution, public education, and review of engineering plans;
- No pesticide rinsates are accumulated; all pesticide rinsates are applied at treatment sites;
- Pesticide drums are removed on a regular basis by a registered recycling service and containers are disposed of according to their label instructions;
- Personnel are trained to handle and apply pesticides to eliminate chances of spills or accidents. However, if spills do occur, personnel also have the training and skills to contain and clean-up spills. Any spilled pesticides/materials and clean-up materials are identified and packaged for pick-up by the County's registered Household Hazardous Waste contractor;
- The Safety and Health Specialist or designee inspects the chemical storage building weekly and oversees immediate corrective action if any deficiencies are found;
- The Safety and Health Specialist or designee inventories pesticides monthly; and
- Fifteen staff members hold Florida Department of Agriculture and Consumer Services, Public Health, Pest Control certifications that require 16 hours of continuing education units during a four-year period.

The Safety and Health Specialist or other certified instructors train the staff in the following:

- Hazard Communication (Right to Know);
- Fire Prevention and Evacuations;
- Emergency Preparedness;
- Personal Protective Equipment;
- Respirator;
- Hazardous Waste Operations; and
- Hurricane Emergency.

Public Works, Operations , Aquatic Plant Control Section

- Storage of pesticides is confined to the same 40 by 60-foot pesticide storage building used by Mosquito Management Services;
- Chemicals that are applied by Aquatic Plant Control are approved by the Department for use in water bodies;
- Aquatic Services does scheduled maintenance on canals and drainage ditches throughout the year. Canal slopes and banks are spot sprayed and every effort is made to avoid broadcast spraying to reduce the amount of herbicide put in the environment; and
- The number of crews spraying herbicides into canals and along roads has been reduced.

Public Works, Facilities Maintenance

- Environmental landscape management practices were employed. (Refer to Appendix G);
- Proper storage and mixing of pesticides, herbicides, and fertilizers was employed;
- No pesticides or herbicides were used on lawn areas;
- 100% organic fertilizer was used;
- Pesticides must be bio-rational, no synthetic chemical pesticides;
- There were no insect problems in the landscape plants. No pesticides were applied there during 2000;

- Storing or mixing of pesticides is prohibited on properties managed by Facilities Maintenance;
- All County libraries have all been certified under the Florida Yards and Neighborhoods Program. Signs are posted by each front entrance and information for the public is available inside the library;
- Contractor bid specifications for Environmental Landscape Management services include explanations, for educational purposes, of the environmental reasons we require the services requested;
- Mulching mowers are required. These specialized mowers chop grass clippings into small pieces that fall amongst the grass, rather than blow out large clumps of grass that can end up in street gutters and stormwater systems;
- Fertilizations practices minimize the harmful impact of nitrate leaching. Sound turfgrass management ensures that the nitrogen is not lost below the root zone by using efficient irrigation systems that minimize percolation, by using slow release nitrogen, and lower application rates, by using reduced frequency of application, by not using sewage sludge products, and by using setbacks from waterbodies. Chelated iron is applied in place of a nitrogen in some cases; and
- Integrated Pest Management focuses on prevention or suppression of pest problems while minimizing impacts on human health, non-target organisms, and surface and groundwater. Less-toxic and biological pesticides are used. When treatment is necessary, the least toxic, most target specific, non-synthetic chemical pesticide will be chosen. The primary objective of the IPM program is to prevent pest problems and eliminate the need for pesticide applications. Facilities Maintenance is a partner in the EPA's Pesticide Environmental Stewardship Program.

Public Works, Forestry Operations

- 13,000 street trees on 100 miles of County roadways are maintained. The trees reduce stormwater volume and aid in the stabilization of roadside and median soils. About 800-1000 new trees are added per year.
- In some areas herbicide usage was reduced 50% by the use of synthetic mulches and mulch blankets.

- The use of slow-release nitrogen fertilizers has reduced application rates by 33% in the last three years.
- All plants and plant areas are inspected at least three times per year for pest control purposes.
- Least-toxic methods, such as the use of baits and soaps, are used to control pests once threshold levels have been reached.
- Native and pest-resistant plant species are used.
- Plant health is emphasized in order to reduce the frequency of pest outbreaks requiring treatment.
- County-wide IPM policies and practices for pest monitoring and pesticide application are followed.
- Proper storage and mixing of pesticides, herbicides, and fertilizers was employed.

Community Services, Parks and Recreation

Pesticide storage was consolidated into one building, reducing the accumulation of old and unused pesticides.

The Model Ballfield project has expanded the use of IPM by the athletic field maintenance program:

- Athletic fields are now being aerated on a regular basis;
- Two slow-release fertilizers were tested for efficiency with the intent to lessen the amount of nitrogen runoff;
- Corn gluten was tested as a natural pre-emergent herbicide;
- USDA and DACS were contacted to obtain the parasitic ant-decapitating flies that attack fire ants; and
- The University of Florida and DACS were contacted to obtain *Steinernema scapterisci*, the species-specific parasitic nematode that attacks mole crickets.

Three additional playgrounds and one park were designated as sites where only least-toxic pesticides will be used. A sign will identify the site as special and will list the least toxic or nontoxic materials used. Three years ago, one playground and one park were designated as pesticide-free. A hot water weed control machine is used as an alternative to herbicides.

Pesticide applications have continued to decline due to scouting activities and increased tolerance for pest damage. Weed control remains the biggest pest problem with no expected reductions in the amount or number of herbicides applied.

Environmental Services, Resource Management

- All pesticides are stored, applied, and disposed of according to their individual EPA-registered labels; and
- Personnel who store and handle pesticides are state certified or work under the supervision of a state certified applicator.

Reduced Use and Proper Storage and Mixing of Pesticides, Herbicides, and Fertilizers - City of Sarasota

Proper storage and mixing of pesticides, herbicides, and fertilizers were employed.

Narrative Reports for SWMP Activities

Section 4.7 - Illicit Discharges - Inspection, Investigation and Enforcement

Pollution Control and Hazardous Waste Management investigated 803 citizen complaints and agency referrals, and also initiated dozens of proactive facility inspections. A substantial number of these investigations involved illicit discharges to the MS4. State rule or County ordinance violations were primarily resolved by voluntary compliance, others involved code enforcement or referral to another regulatory agency. More information is available in Appendices C and E of this report.

Narrative Reports for SWMP Activities

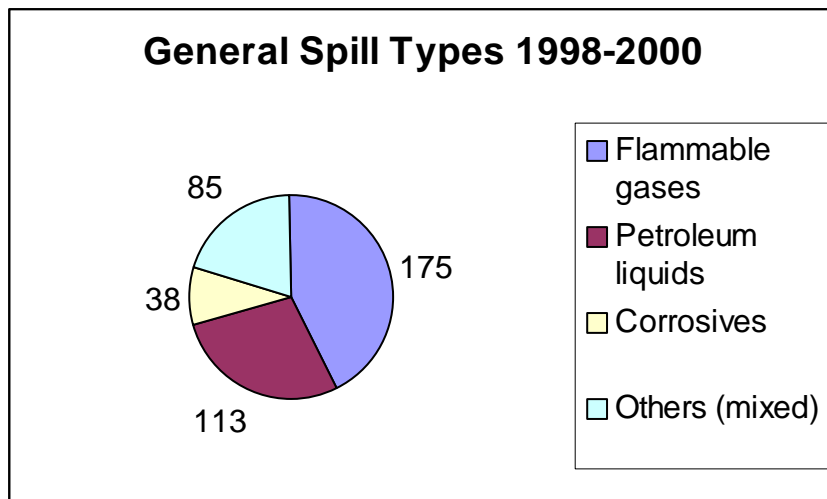
Section 4.8 - Field Screening

Two hundred sixty-five major stormwater outfalls were field-screened during dry-weather. No illicit discharges were found and no contaminants were detected. Refer to Appendix D for a log of sites. More information is available in Appendix D of this report.

Narrative Reports for SWMP Activities

Section 4.9 - Spill Response

The Sarasota County Hazardous Materials Plan describes procedures to be followed in the event of a hazardous materials spill, as reported in the Annual Report for Year One. The plan is followed in both the City of Sarasota and Sarasota County since the Fire Departments were consolidated in 1996. The Fire Department Special Operations Team is the lead agency for spill response and handled 411 hazardous materials incidents during the 1998-2000 calendar years. Sarasota County Hazardous Waste Management assisted in 34 instances. The table below summarizes the types of most common incidents:



During 2000, the Sarasota County Fire Department Special Operations Team undertook a strategic planning initiative that resulted in two significant outputs. First, the development of a more comprehensive incident response report that provides better data concerning product releases and control efforts. Second, the Special Operations team has established a set of performance measures that will be closely tracked for improvement. The performance measures are:

- Ratio of materials released compared to that available for release from a container;
- Perceived as “mostly helpful” by our customers;
- Percentage of time that highly trained Haz-Mat Technicians are on scene anywhere within Sarasota County within 20 minutes of initial dispatch;

- Time from initial dispatch to “on-air” (starting offensive leak control operations);
- Time from initial dispatch to a declaration of “spill controlled;”
- Time from initial dispatch to a declaration of “leak controlled;”
- Average and actual number of hours training per Special Operations team member; and
- Haz-Mat Team assessment score obtained from the Florida State Emergency Response Commission (SERC) Hazardous Materials Team. SERC was formed as a result of the Superfund Amendments and Reauthorization act of 1986.

The Performance Measure Assessment Methodology:

- Number of Section 302 and 311 target hazards planned each quarter. (Superfund Sections 302 and 311 requires facilities storing hazardous materials to register with Haz-Mat teams);
- Percentage of Special Operations Team members trained to the Florida SERC and National Fire Protection Association (NFPA) standard competencies for Haz-Mat Technician;
- Percentage of shifts in which seven Haz-Mat Technicians are available for immediate dispatch on a first alarm assignment;
- Percentage of direct expense recovered from responsible party; and
- Percentage of indirect expense (readiness to respond) recovered from external funding sources (e.g., grants).

The combination of the new incident reporting document and the newly adopted performance measures ensures that the Fire Department Special Operations Team will meet the needs of the community.

Narrative Reports for SWMP Activities

Section 4.10 - Public Reporting of Illicit Discharges

Pollution Control continued the 24-hour on-call hotline to receive reports of pollution incidents and citizen complaints. A summary table of the 744 reports in 2000 is in Appendix C. All were investigated. The tallies for each category were:

Water Quality	131
Sewage	91
Wash Water	90
Grease	65
Petroleum	55
Stormwater	46
Wastewater Treatment	
Facility Odor	38
Algae/Bacteria/Vegetation	30
Erosion/ Turbidity	29
Odor	27
Chemical	26
Fish Kill	23
Solid Waste	16
Industrial Waste	14
POTW	12
Hazardous Waste	11
Burn	11
Noise	7
Pesticide	7
Landfill	5
Particulates	3
Septage	3
Abnormal Event	3
Asbestos	1

An incident response form will be posted on the County website in 2001 and will provide a means for citizens to report pollution problems to Pollution Control via the internet.

A training program is being developed for county field personnel to improve the detection of and reporting of illicit connections to the MS4.

Education of the public in water quality issues was continued. Some of the public education forums included:

- The Alliance for Environmental Education Solutions annual "Teach the Teacher" program;
- Sarasota County Fair;
- Earth Day;
- Ashton Elementary School Science Fair;
- The Pollution Control sponsored Annual Domestic Waste Workshop;
- Ongoing education of citizens, business owners, and employees during incident responses and inspections;
- The Environmental Services newsletter; and
- Presentations made to interested groups.

Narrative Reports for SWMP Activities

Section 4.11 - Oil and Household Hazardous Waste

City and County

- Hazardous Waste Management provided citizens with proper methods of disposal for household hazardous waste and used oil;
- Project Green Sweep provided an inexpensive method of disposal for hazardous wastes generated by businesses defined as Conditionally Exempt Small Quantity Generators (CESQGs);
- The Countywide curbside used oil collection program continued, and two used oil recycling stations were also available to the public;
- CESQG collections were conducted one day per month;
- 23,510 gallons of used oil were collected and recycled;
- 389,461.25 pounds of household and CESQG hazardous waste were collected;
- Two permanent household hazardous materials collection centers were open 2-3 days per week, including weekends;
- Household Chemical Collections (Amnesty Days) were conducted nine days during the year; and
- Sarasota County Hazardous Waste Management conducted 146 inspections of renovation and demolition projects to ensure proper disposal of mercury-containing lamps and thermostats, ballasts, rechargeable batteries, lead, and other hazardous materials.

Narrative Reports for SWMP Activities

Section 4.12 - Sanitary Sewer Seepage

All citizen reports of discharges from sanitary sewers were promptly reported to the appropriate utility. All reports of septic system discharges were promptly referred to the Sarasota County Department of Health. The seventy wastewater treatment facilities (City, County and private) in Sarasota County reported the following types of abnormal events to Pollution Control:

No spill	77
Lift station electrical	19
Lift station mechanical	22
Manhole overflow	21
Force main	31
Lateral	9
Spill to ground	70
Spill to stormwater	57
Spill to surface water	37

Sarasota County

Sarasota County Utilities owns and operates the following nine wastewater treatment plants:

- Bee Ridge Water Reclamation Facility (WRF) FLA013372
- Central County WRF FLA013455
- Meadowood WRF FLA013385
- Venice Gardens WRF FLA0434940
- Atlantic/Brentwood WRF FLA134333
- Plantation WRF FLA013365
- Circlewoods WWTF FLA013406
- Gulf View WWTF FLA013465
- Proctor Road WWTF FLA013447

Sanitary sewer seepage occurs from three main sources: gravity sewer lines (including manholes), sewer force mains, and lift stations. A concerted effort by Utilities to eliminate and minimize such spills is described below.

- Treatment facilities were inspected at least twice a day, during which the operator looked for evidence of leaking pipes and malfunctioning equipment. Two checklists were completed daily. The treatment facility was inspected at least once a day for the items on the pretreatment, biological nutrient reduction, chlorination equipment, and effluent checklists. The equipment running hours checklist was filled out daily, as a check on potential equipment problems.
- Most of the effluent was used for irrigation of golf courses and residences. Quarterly groundwater monitoring was conducted at most sites where reclaimed water was applied. Effluent was monitored annually for primary and secondary drinking water standards. In addition, all groundwater monitor wells were tested during permit renewal for primary and secondary drinking water standards. Most golf courses had an effluent storage pond from which irrigation water was drawn. These ponds are regulated by the Department and SWFWMD.
- A vacuum/flush truck was used to flush gravity sewer lines. Flushing prevented the development of obstructions in the pipes that cause sewage backups and overflows.
- A SCADA telemetry system provided a radio linkup between the facilities and lift stations. Malfunctions were identified faster and responses were faster, resulting in fewer spills.
- Sarasota County Utilities spent \$2,150,000 on lift station maintenance and rehabilitation.
- Utilities used a television truck to view gravity sewer lines and services. The truck enabled the identification of potential breaks and misaligned pipes that could have resulted in spills or overflows.
- The ongoing Sanitary Sewer Evaluation Study (SSES) evaluated the integrity of gravity sewer lines and manholes, and helped prioritize replacement and repair projects. The purpose of this project was to prevent groundwater or stormwater from inflowing or infiltrating (I&I) into the collection system, but also reduced the potential for leakage during periods of low groundwater. The SSES findings resulted in the expenditure of \$750,000 for relining of gravity sewer lines and rehabilitation of manholes.

- A team of eight employees and \$85,000 in new equipment were allocated solely to the prevention and reduction of I & I.
- A manhole insert program was initiated. Diaphragm-type units were inserted into the top of manholes to prevent stormwater inflow at a cost of \$60,000.
- All lift stations were fenced to reduce vandalism.
- Utilities followed an in-house protocol for spill response: “Spill Response Standard Operations Procedures.” Appropriate clean up, disinfection, and sampling procedures were followed.
- All wastewater collection and transmission systems and appurtenances (lift stations, manholes) were permitted by both the Department and Utilities. The local ordinance, the Sarasota County Utilities Uniform Water, Wastewater and Reuse System Code, regulates new wastewater systems. All aspects of construction were monitored by Utilities staff. Proper design and construction of wastewater systems results in adequate sizing of lines, pumps, and lift stations as well as better joining and restraint of pipes that helps reduce the possibility of sewage leaks.
- All wastewater treatment facility designs complied with design standards of the Department, including prevention of flooding.
- Treatment plant service commitments were reviewed annually after each plant reached 50% of its capacity. Treatment plants expansion was appropriately done to prevent hydraulic overload conditions that could lead to wastewater spills or substandard effluent.
- The lift station maintenance program is described in “Sarasota County Utilities Department Lift Station Preventive Maintenance and Routine Maintenance Procedures.”

City of Sarasota

The Public Works Department continued to improve its sole domestic wastewater treatment facility:

- Continuing maintenance and capital upgrades improved the system;
- Although grant funding was no longer available, an infiltration and inflow control project was continued;

- The cleaning and televising study of the collection system focused repairs (including slip lining) on the weakest components;
- A pilot project to reduce infiltration by evaluating 500 private building sewers was continued. Phase One at a cost of \$227,000, included video inspection and installation of a cleanout. Those data were analyzed and used to develop Phase Two of the program that replaced defective private sewers beginning during the summer of 2001. The project will use no-dig technology such as pipe splitting wherever possible. Estimated final cost is \$750,000;
- Wastewater residuals were composted and reused as mulch; 1500 dry tons of sewage sludge were composted, rather than being land applied;
- Effluent disposal was subject to a NPDES permit for direct discharge to Whitaker Bayou, or to reuse irrigation; and
- The Spill Response Plan approved by Pollution Control was still employed.

Narrative Reports for SWMP Activities

Section 4.13 - High Risk Industrial Facility Inspections

Pollution Control inspected 564 City and County industrial facilities; several of these were identified as having prohibited discharges. Each facility was evaluated for the necessity of an EPA Multi-Sector NPDES Permit. A log of facility inspections is in Appendix E.

Pollution Control began an expansion of its industrial database by accessing the Sarasota County Tax Collector records of occupational licenses. Many of the businesses inspected were identified as having incorrectly listed SIC codes, which in some cases triggered their removal from the industrial list or their shift to the appropriate Multi-Sector General Permit (MSGP) sector. In addition, final delegation of the NPDES Stormwater program to the Department caused a local-level program change primarily with respect to the federal No Exposure Exclusion. The following table totals the industrial inspections according to the Phase I rule (Federal Register, Volume 60, No. 189, Friday, September 29, 1995).

Table 4.13 Industrial Inspections.

MSGP Sector	Sector Description	NPDES Phase I Category	Number of Inspections
A	Timber Products	(ii): SIC Code 24, Lumber & Wood Products except 2434	7
B	Paper & Allied Products Manufacturing	(ii): SIC Code 26, Paper & Allied Products except 265 paperboard containers, & 267 converted paper; (xi): Light Industry SIC Code 265, Paperboard Containers; 267 Miscellaneous Products	1
C	Chemical & Allied Products Manufacturing	(ii): SIC Code 28, Chemicals & Allied Products except 283 drugs, & 285 paints & allied products.	22
E	Glass, Clay, Cement, Concrete, & Gypsum Product Manufacturing	(ii): SIC Code 32, Stone, Clay, & Glass Production except 323 products of purchased glass; (xi): Light Industry SIC Code 323, Products of Purchased Glass.	23
F	Primary Metals	(ii): SIC Code 33, Primary Metal Industry	2
M	Automotive Salvage Yards	(vi): SIC Code 5015, Scrap Recycling Facilities Used Motor Vehicle Parts	1
N	Scrap Recycling Facilities	(ii): SIC Code 5093, Scrap Recycling Facilities Scrap & Waste Materials	5
P	Land Transportation	(viii): Transportation SIC Code 40, Railroad Transportation; 41, Local & Transit; 42, Trucking & Warehousing except 4221-25; 43 US Postal Service; 5171, Petroleum Terminals	38
R	Ship or Boat Building or Repairing Yards	(ii): SIC Code 373, Ship & Boat Building & Repair.	18
T	Treatment Works	(ix): Treatment Works SIC Code TW (4952), Treatment Works.	16
U	Food & Kindred Products	(xi): Light Industry SIC Code 20, Food & Kindred Products.	9
V	Textile Mills, apparel, & Other	(xi): Light Industry SIC Code 22, Textile Mill Products; 23 Apparel & Other Textile Products.	35

	Fabric Product Manufacturing		
W	Furniture & Fixtures	(xi): Light Industry SIC Code 25, Furniture & Fixtures; 2434, Wood Kitchen Cabinets	38
X	Printing & Publishing	(xi): Light Industry SIC Code 27, Printing & Publishing	53
Y	Rubber, Miscellaneous Plastic Products, & Miscellaneous Manufacturing Industries	(xi): Light Industry SIC Code 30, Rubber & Miscellaneous Plastic; 39, Miscellaneous Manufacturing	53
AA	Fabricated Metal Products	(xi): Light Industry SIC Code 34, Fabricated Metal Products except 3441; 39, Miscellaneous Manufacturing; (ii): SIC Code 3441, Fabricated Structural Metal.	62
AB	Transportation Equipment, Industrial or Commercial Machinery	(xi): Light Industry SIC Code 35, Industrial Machinery & Equipment	22
AC	Electronic, Electrical, Photographic & Optical Goods	(xi): Light Industry SIC Code 36, Electronic & Other Electric Equipment; 38, Instruments & Related Products	37
Other	Other Local Businesses Inspected for Stormwater Issues	Not Applicable	122

Hazardous Waste Management inspected 185 businesses as part of the Small Quantity Generator (SQG) program. The inspection included a NPDES Stormwater Inspection screening form that was forwarded to Pollution Control for further investigation.

Narrative Reports for SWMP Activities

Section 4.14 - Construction Planning Procedures

Sarasota County - The previous annual report referenced revisions to the Land Development Regulations and predicted approval of the revisions during 2000. As a result of the lengthy review process and demands on staff, the revisions were not presented to the Board of County Commissioners until the end of 2000. The revisions have been finalized and became effective May 7, 2001. The revisions include a more stringent requirement for installation, inspection, and maintenance of BMPs. Additionally, failure to install or properly maintain the erosion controls will result in a stop work order being posted on the site until such deficiencies are corrected. Final acceptance and verbiage of the revisions will be reported in the subsequent Annual Report (for year 2001).

Engineering Inspectors have initiated the use of a construction site checklist to document inspections and needed maintenance of the Best Management Practices in place. The process, during 2000, called for completing the checklist at the beginning of every project. Subsequently, needed maintenance of the BMPs was reported to the site operator verbally. This method was deemed effective in having the maintenance needs addressed. For 2001, it is expected that written documentation will be kept of the needed BMP maintenance activities.

Narrative Reports for SWMP Activities

Section 4.15 - Construction Inspections

Sarasota County

Land Development Services inspected hundreds of construction sites and advised the developers about proper installation and maintenance of erosion control devices.

When the field inspectors observed a failure in the sediment runoff containment system, the contractor was given a day or two to correct. Failure to correct the problem within the specified time resulted in an immediate stop-work order issued by Land Development Services. The stop-work order stayed in effect until the containment system was re-established.

The General Manager and the Executive Director of Land Development Services were supportive of firm enforcement. A goal for 2001 is to improve the continuity of the silt screens and reduce persistent problems of minor breeches in the silt screen.

City of Sarasota

Chapter 29.5 of the City of Sarasota's Code requires erosion and siltation permits for all soil disturbing activities, all commercial construction permits, and some residential construction permits. The permit required implementation of BMPs for erosion, siltation, and pollution prevention. Inspections were conducted by an employee of the City Engineer's office, who was certified through FW&PCOA for construction site erosion and siltation BMPs. Enforcement was handled by Development Services using code enforcement or stop-work orders.

Narrative Reports for SWMP Activities

Section 4.16 - Education Activities

Twenty-eight County employees and three City employees were trained, and passed the exam, for the Department Erosion and Sedimentation certification offered by the Suncoast Public Works Academy at the Sarasota Vocational Technical Institute. Trained municipal employees taught the class.

Narrative Reports for SWMP Activities

Section 4.17 - Monitoring Activities

Section 5 of this Annual Report details the monitoring accomplishments.

Narrative Reports for SWMP Activities

Section 4.18 - Additional SWMP Activities

There are no additional activities to report at this time.

Monitoring Program Report

Section 5.1 - Monitoring Objectives

The monitoring program was developed in two phases. The permit required:

- Seasonal loading and event mean concentration data to be reported in the Annual Report for Year Four (Part V.A.1.);
- Investigation of organic pollutants identified in the permit application to be reported in the Annual Report for Year Three (Part V.A.2.); and
- Development of additional monitoring conditions (Part V.B.).

The additional monitoring conditions were defined in a letter from the U.S. EPA to Sarasota County Government dated March 27, 1997 and required:

- Long term monthly ambient water quality sampling from several bays and the Myakka River starting December 31, 1996 and to be reported on Discharge Monitoring Report forms with the Annual Report for Year Five (Part V.B.1.a.);
- Long term sampling near the North Port water plant to be reported by the City of North Port (Part V.B.1.b.);
- Long term ambient sediment, water, and biological sampling from Big Slough, Phillippi Creek, and Hudson Bayou to be reported in the Annual Report for Year Five (Part V.B.2.); and
- Two-phased investigation of metals contamination in Hudson Bayou, including sediment and stormwater samples, to be reported in the Annual Report for Year Five (Parts V.B.3. and 4.).

The objectives for these monitoring activities are two fold. The objective of long term ambient monitoring, as well as the seasonal load and event mean concentration data, is to characterize water quality trends (improvements or degradations). Refer to Appendix H for the segments for the Ambient Monitoring Program. The objective of the Hudson Bayou and organics investigation data is to find and eliminate sources of pollutants.

Monitoring Program Report

Section 5.2 - Summary Table of Completed Monitoring

Table 5.2 Completed Monitoring

Station Locations	Sample Type	Parameters	Frequency	Completed	Comments
Seasonal loading and event mean concentration (Part V.A.1.).	Water	BOD, COD, TSS, TDS, TKN, NO ₂ +NO ₃ , TP, O&G, Cd, Cr, Cu, Pb, Zn, and dissolved P.	Once.	Yes. Completed in 1998-99.	The report was submitted on October 14, 1999, subsequent to the Annual Report for Year Four.
Richardson Road / 1 station. (Part V.A.2.)	Storm Water	Bis(2-ethylhexyl)phthalate.	Once.	Yes. Completed in 1999.	
East Avenue / 1 station. (Part V.A.2.)	Storm Water	3,4 benzofluoranthene, Bis(2-ethylhexyl)phthalate, Chrysene, and 4,4'-DDE.	Once.	Yes. Completed in 1999.	
Several bays and Myakka River / 40 stations. (Part V.B.1.a.)	Water	Temperature, pH, DO, salinity, specific conductance, BOD, color, turbidity, TSS, dissolved NO ₂ , dissolved NO ₃ , NO ₂ +NO ₃ -N, dissolved and total ammonia, dissolved inorganic nitrogen, TKN, TN, orthophosphate, TP, chlorophyll, and secchi depth.	Ongoing Monthly.	Yes. Completed from 1995 to present.	The data format is the same as provided in the Annual Report for Year Five (1999). Data is available on request.
Several bays and Myakka River / 40 stations. (Part V.B.1.a.)	Water	In-situ: water temperature, pH, dissolved oxygen, salinity, and specific conductance.	Ongoing. One early morning per month.	Yes. Completed from 1995 to present.	The data format is the same as provided in the Annual Report for Year Five (1999). Data is available on request.
Several bays and Myakka River / 40 stations. (Part V.B.1.a.)	Water	Hydrolabs measure continuous 24-hour in-situ: water temperature, pH, dissolved oxygen, salinity, and specific conductance.	Ongoing. Two per month.	Yes. Completed from 1995 to present.	The data format is the same as provided in the Annual Report for Year Five (1999). Data is available on request.
Phillippi Creek, Hudson Bayou, and Big Slough / 6 stations. (Part V.B.2.)	Water	COD, BOD, NO ₂ +NO ₃ -N, TKN, total and dissolved P, TDS, TSS, oil & grease, cadmium, chromium, copper, lead, zinc, temperature, pH, DO and specific conductance.	Ongoing. Twice annually in wet season and dry season.	Yes. Completed in 2000.	The data format is the same as provided in the Annual Report for Year Five (1999). Data is available on request.
Phillippi Creek, Hudson Bayou, and Big Slough / 6 stations. (Part V.B.2.)	Biological	Analysis of Biological Community.	Ongoing. Twice annually in wet season and dry season.	Yes. Completed in 2000.	The data format is the same as provided in the Annual Report for Year Five (1999). Data is available on request.
Phillippi Creek, Hudson Bayou, and Big Slough / 6 stations. (Part V.B.2.)	Sediment	Particle size, aluminum, cadmium, chromium, copper, lead, zinc, TN, TP, and TOC.	Ongoing. Annually in December.	Yes. Completed in 2000.	The data format is the same as provided in the Annual Report for Year Five (1999). Data is available on request.
Hudson Bayou / 5 stations. (Parts V.B.4.)	Storm Water	Cadmium, lead, copper, zinc, and chromium.	Four times.	Yes. Completed in 1999 and 2000.	The data was provided in the Annual Report for Year Five (1999).

Monitoring Program Report

Section 5.3 - Monitoring Conclusions

Estimates of seasonal pollutant load and event mean concentrations for a representative storm were calculated using a watershed management model for each major watershed. The model is based on the observation that stormwater characteristics vary with land use. The same method was used for the permit application in 1993. The report concluded that total pollutant loads increased slightly because of increased urbanization, despite the addition of stormwater control structures. The report was submitted on October 14, 1999, subsequent to the Annual Report for Year Four. This element was required by permit Part V.A.1.

The long-term, monthly ambient water quality sampling from several bays and the Myakka River is an excellent data set for the following reasons:

- Monthly samples are frequent enough to allow various methods of data analysis;
- Nearly all estuaries are included;
- The sample locations are random enough to allow characterization of the water body segments as a whole;
- The contractor provided a high level of quality control;
- The data has been gathered for more than six years;
- The design parameters are consistent with the other adjacent monitoring programs; and
- The sample locations are geographically close, allowing more data analysis.

The data has been aggressively shared with several agencies for water quality trends analysis, including:

- Florida Department Bureau of Watershed Management;
- Charlotte Harbor Environmental Center;

- Charlotte Harbor National Estuary Program;
- SWFWMD District Myakka River Comprehensive Watershed Management;
- SWFWMD Southern Coastal Comprehensive Watershed Management;
- Sarasota Bay National Estuary Program;
- Tampa Bay Estuary Program; and
- Mote Marine Laboratory.

It is expected that conclusions will have been drawn by these agencies and will be reported in the next Annual Report. This element was required by permit Part V.B.1.a.

Conclusions from the long-term monitoring of sediments, biology, and water quality in Hudson Bayou, Phillippi Creek, and Big Slough were described in the Annual Report for Year Five (1999). In general, this portion of the monitoring program develops data that is too sparse to be readily analyzed for trends. Eventually some trends may be retrieved from the data. This element was required by permit Part V.B.2.

Monitoring of Hudson Bayou has been very informative, as described in the Annual Report for Year Five (1999). The Bayou is heavily contaminated by lead-tainted sediments, but does not currently receive correspondingly high amounts of lead from stormwater or other discharges. Concentrations of lead in the water column are intermittently elevated, probably related to weather conditions that stir up contaminated sediments. An interagency investigation of the situation has expanded far beyond the permit required monitoring that was completed last year. No source of the contamination has been identified. These elements were required by permit Parts V.B.3. and V.B.4.

Monitoring Program Report Section 5.4 - Monitoring Compliance

All monitoring was completed.

Monitoring Program Report

Section 5.5 - Monitoring Program Revisions

There are no Monitoring Program Revisions at this time. Refer to Section 6.2 of this report for Monitoring Program Modifications.

Monitoring Program Report

Section 5.6 - Inventory of Major Outfalls

An updated inventory of all outfalls in both unincorporated Sarasota County and the City of Sarasota was included in the Annual Report for Year Five (1999). The outfall inventory continues to be updated.

Permit Modifications

Section 6.1 - SWMP Modifications

The following suggestions are intended to focus limited resources on activities more likely to effect positive changes in water quality.

- Construction site inspectors are required to complete a checklist that includes observing a Notice of Intent (NOI) and Stormwater Pollution Prevention Plan (SWPPP) on site. The NOI is submitted during development review with plans that include BMPs that are substantially the same as the SWPPP. Please replace the checklist requirement from the permit, and substitute verification of NPDES permit coverage and a SWPPP or equivalent BMPs submitted during the plans review phase.
- Please delete the requirement for holding an annual NPDES workshop for design professionals, land developers, inspectors, and contractors (Part II 9.C) from the permit. It has come to our attention that the Department will no longer offer certification to the contractors. This requirement should be elective rather than mandatory.
- The FW&PCOA training course is substantially the same as the Department Erosion and Sediment Control training. Please consolidate these two training requirements and allow either to suffice.

Permit Modifications

Section 6.2 - Monitoring Program Modifications

Estimates of seasonal pollutant load and event mean concentrations for a representative storm were calculated using a watershed management model for each major watershed. This model may need to be modified to provide estimates of pollutant loading useful to watershed management.

The long-term, monthly ambient water quality sampling from bays and river will be modified in 2001. The early morning meter readings will no longer be collected. Instead, the contractor will provide trend analysis of all data to date. New segments will be added to fill data gaps in northern Sarasota Bay and near the Venice inlets.

As discussed in the previous section, the Discharge Monitoring Report is inappropriate for the permit-required, non-discharge water quality data. There are no applicable effluent limits and the forms are too small to handle the amount of data generated. The ambient bay and river monitoring program generates 1624 rows and 27 columns of data in an Excel spreadsheet that does not include most of the in-situ meter data. A DMR form can hold seven data points. Neither the permittees or permitters can use data in a DMR format; it is inaccessible. Please replace the DMR reporting format with a spreadsheet format.

Sarasota County is willing to develop new monitoring elements to replace those that were completed, as long as the total cost does not increase. It is essential that the design of any replacement monitoring be capable of providing useful information. The ambient bay and river monitoring provides a useful model for additional monitoring designs. The County is investigating grant funding to expand the ambient monitoring program into the watersheds. A design is being considered that could characterize water segments and could also be used to calculate pollutant loading. This monitoring design would need to correspond closely with the Department watershed management methods. A negotiation with NEPs, the Department, and SWFWMD is suggested to develop a useful monitoring element.

Permit Modifications
Section 6.3 - Other Permit Modifications

No other permit modifications are suggested at this time.

Section 7 - Fiscal Analysis

These figures were based on the best available information from the employees of Sarasota County and the City of Sarasota who were responsible for implementing and reporting on these elements.

Table 7.1. Financial Survey for Year Six (2000):

Program Activity	Previous Year (FY 1999)	Current Year (FY 2000)	Future Year (FY 2001)	Funding Source/Comments
1. O & M of Structural Controls; Inspect Structural Controls - City & County	\$187,000	\$191,000	\$191,000	Stormwater Fees
1. O & M of Structural Controls; Private Stormwater Systems - City and County	Not Available as a Line Item Cost			Costs included with Inspections of Structural Controls
1. O & M of Structural Controls; Inspector Training - City and County	Drainage: \$2,500	Drainage: \$2,500	Drainage: \$2,500	Stormwater Fees
2. Control of Discharges; Adopt Ordinances and LDRs - County	Not Available as a Line Item Cost			
2. Control of Discharges; Adopt Ordinances and LDRs - City	Not Available as a Line Item Cost			
2. Control of Discharges; Basin Planning - City and County	\$2,033,000	\$1,815,000	\$1,598,059	Stormwater Fees
3. O & M of Roads; Litter Control - City and County	\$80,000	\$136,214 (10% of mowing contract)	\$136,214 (10% of mowing contract)	Transportation General Funds & Solid Waste Fees
3. O & M of Roads; Litter Control Keep Sarasota Beautiful -City & County	\$130,000	\$139,000	\$139,000	Solid Waste Tipping Fees & DEP Grants.
3. O & M of Roads; Street Sweeping - County	\$3,100,000	\$3,000,200 Road & Br: \$240,063	Road & Br: \$245,000	Stormwater Fees & General Funds
3. O & M of Roads; Street Sweeping - City	\$250,000	\$450,800	\$450,800	Gas Tax
3. O & M of Roads; Catch Basin and Ditch Maintenance - City & County	\$1,961,297	Drainage: \$900,392	Drainage: \$950,000	Stormwater Fees
3. O & M of Roads; Road Repair & Facility BMPs - County	Drainage: \$2,250 \$2, 844	\$2,793	\$2,793	Stormwater Fees
3. O & M of Roads; Road Repair & Facility BMPs - City	\$4,000	\$4,000	\$4,000	Public Works

Program Activity	Previous Year (FY 1999)	Current Year (FY 2000)	Future Year (FY 2001)	Funding Source/Comments
4. Flood Control Projects; Capital Improvement Drainage Projects - City & County	\$7,728,221	\$7,352,000	\$5,567,973	Stormwater Capital Improvement Assessments
5. Discharges from Solid Waste, POTW, Residuals, and Fleet Facilities - County	Sol.Waste: \$50,000 City Utility: NA	Sol.Waste: \$50,000 City Utility: NA	Sol.Waste: \$50,000 City Utility: NA	Utilities Fees & Solid Waste Fees
5. Discharges from Solid Waste, POTW, Residuals, & Fleet Facilities - City	Not Available as a Line Item Cost			Utility Fees & Solid Waste Fees
6. Pesticides, Herbicides, and Fertilizers; Public Education - City & County	Coop. Ext: 35,885 Mosquito: \$4,100	Coop. Ext: \$43,767 Mosquito: \$4,300	Coop. Ext: \$85,000 Mosquito: \$4,800	Extension Service General Funds, Utilities and Stormwater
6. Pesticides, Herbicides, and Fertilizers; Employee Training - County	Extension: \$815 Mosquito: \$2,800 Res. Mgt: \$100 Drainage: \$800	Extension: \$1271 Mosquito: \$3,200 Res. Mgt.: \$800 Drainage: \$1000	Extension: \$1271 Mosquito: \$3,300 Res. Mgt. : \$375 Drainage: \$1,000	Stormwater & Extension Service General Funds & NRM/ESBC
6. Pesticides, Herbicides, and Fertilizers; Employee Training - City	NA	NA	NA	
6. Pesticides, Herbicides, and Fertilizers; Minimize Use and Proper Storage - County	Drainage: \$7000 Mosquito: \$5,600 Res. Mgt.: \$650	Drainage: \$10,000 Mosquito: 3,700 Res. Mgt. : \$500	Drainage: \$10,000 Mosquito: \$2,750 Res. Mgt.: \$425	Stormwater & Extension Service General Funds & NRM/ESBC
6. Pesticides, Herbicides, and Fertilizers; Minimize Use and Proper Storage - City	NA	NA	NA	
7a. Illicit Discharges & Disposal; Non-Stormwater Discharges Allowed - City & County	Not Available as a Line Item Cost			Included in Cost of Illicit Inspections and Enforcement
7a. Illicit Discharges & Disposal; Inspections and Enforcement - City & County	\$376,124	\$426,019	\$426,019	Unincorporated Area Services Funds
7a. Illicit Discharges & Disposal; Amend Ordinances - City & County	Not Available as a Line Item Cost			Included in Cost of Illicit Inspections and Enforcement
7b. Illicit Discharges & Disposal; Outfall Inventory & Field Screening - City & County	Not Available as a Line Item Cost			Included in Cost of Illicit Inspections and Enforcement
7c. Illicit Discharges & Disposal; Investigate Illicit Connections - City & County	Not Available as a Line Item Cost			Included in Cost of Illicit Inspections and Enforcement
7d. Illicit Discharges & Disposal; Spill Response - City & County	\$ 315,395	\$ 324,107	\$ 352, 746	Landfill Fee Surcharges & Fire Department General Funds
7e. Illicit Discharges & Disposal; Publicize Reporting of Illicit Discharges - City & County	Not Available as a Line Item Cost			Included in Cost of Illicit Inspections and Enforcement
7f. Illicit Discharges & Disposal; Hazardous Waste Collection - City & County	\$386,490	\$386,490	\$352,400	Landfill Fee Surcharge

Program Activity	Previous Year (FY 1999)	Current Year (FY 2000)	Future Year (FY 2001)	Funding Source/Comments
7f. Illicit Discharges & Disposal; Storm Drain Stenciling - City & County	Not Available as a Line Item Cost			Costs Included in Litter Control
7g. Illicit Discharges & Disposal; Sanitary Sewer Seepage - County	\$3,200,000	\$3,145,000	\$3,145,000	Utilities Fees
7g. Illicit Discharges & Disposal; Sanitary Sewer Seepage - City	O&M: \$1,870,123 CIP: \$3,627,250	O&M: \$1,732,267 CIP: \$2,058,460	O&M: \$1,847,971 CIP: \$2,164,732	Utility Fees
8a. Industrial and High Risk Runoff; Facility Inspections - City & County	Not Available as a Line Item Cost			Included in Cost of Illicit Inspections and Enforcement
8b. Industrial and High Risk Runoff; Monitoring - City & County	Not Available as a Line Item Cost			Included in Cost of Illicit Inspections and Enforcement
9a. Construction Site Runoff; Amend Rules & Track Projects - County	Not Available as a Line Item Cost			Natural Resources & Transportation General Funds
9a. Construction Site Runoff; Amend Rules & Track Projects - City	Not Available as a Line Item Cost			
9b. Construction Site Runoff; Inspection and Enforcement - County	NA	\$13,500	\$27,000	Review Fees
9b. Construction Site Runoff; Inspection and Enforcement - City	Not Available as a Line Item Cost			
9c. Construction Site Runoff; Site Operator Training & Notification - County	NA	NA	NA	
9c. Construction Site Runoff; Site Operator Training & Notification - City	Not Available as a Line Item Cost			
V.A.1. Seasonal Loadings and Event Mean Concentrations - City & County	\$7500	NA	NA	Stormwater Fees
V.A.2. Investigation of Organic Pollutants - City & County	\$1000	NA	NA	Stormwater Fees
V.B.1. Existing Monthly Bay and Stream Runs - City & County	\$119,941	\$119,941	\$131,232	Unincorporated Area Services Funds
V.B.2. Monitoring in Big Slough, Hudson Bayou & Phillippi Creek Basins - City & County	\$28,020	\$28,684	\$26,722	Stormwater Fees
V.B.3. Heavy Metals Monitoring Program in Hudson Bayou, Phase I - City & County	\$2020	Completed	Completed	Stormwater Fees

Program Activity	Previous Year (FY 1999)	Current Year (FY 2000)	Future Year (FY 2001)	Funding Source/Comments
V.B.4. Heavy Metals Monitoring in Hudson Bayou, Phase II - City & County	\$3081	\$7529	\$30,000	Stormwater Fees
Totals	\$25,525,806	\$22,594,497	\$17,597,336	