

Roberts Bay (WBID 1968D) Watershed Sampling

Sarasota County
Water Resources

The background of the slide is a solid blue color. In the lower right quadrant, there are several decorative elements consisting of concentric circles, resembling ripples in water. These ripples are rendered in a lighter shade of blue, creating a subtle, textured effect.

Roberts Bay (WBID 1968D) TMDL

- TMDL issued by FDEP and EPA in November 2005
- Calls for a 0.6% reduction in total nitrogen or an 8.4% NPDES nonpoint source load reduction

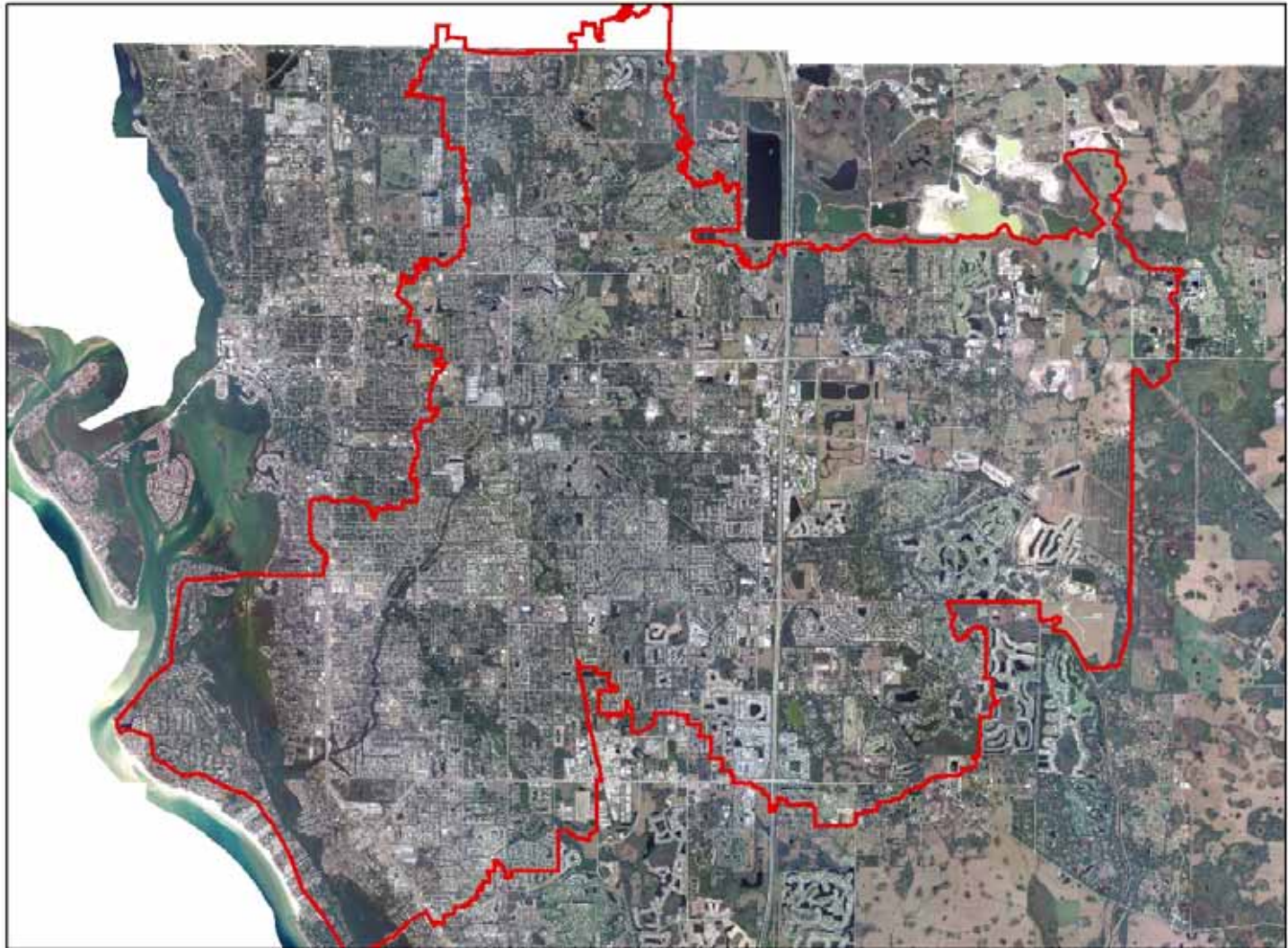
TN Load Estimates (2004)

- 61% - Surface Water Runoff
- 31% - Groundwater Seepage
- 3.5% - Baseflow
- 3% - Point Source Load
- 1.5% - Atmospheric Deposition

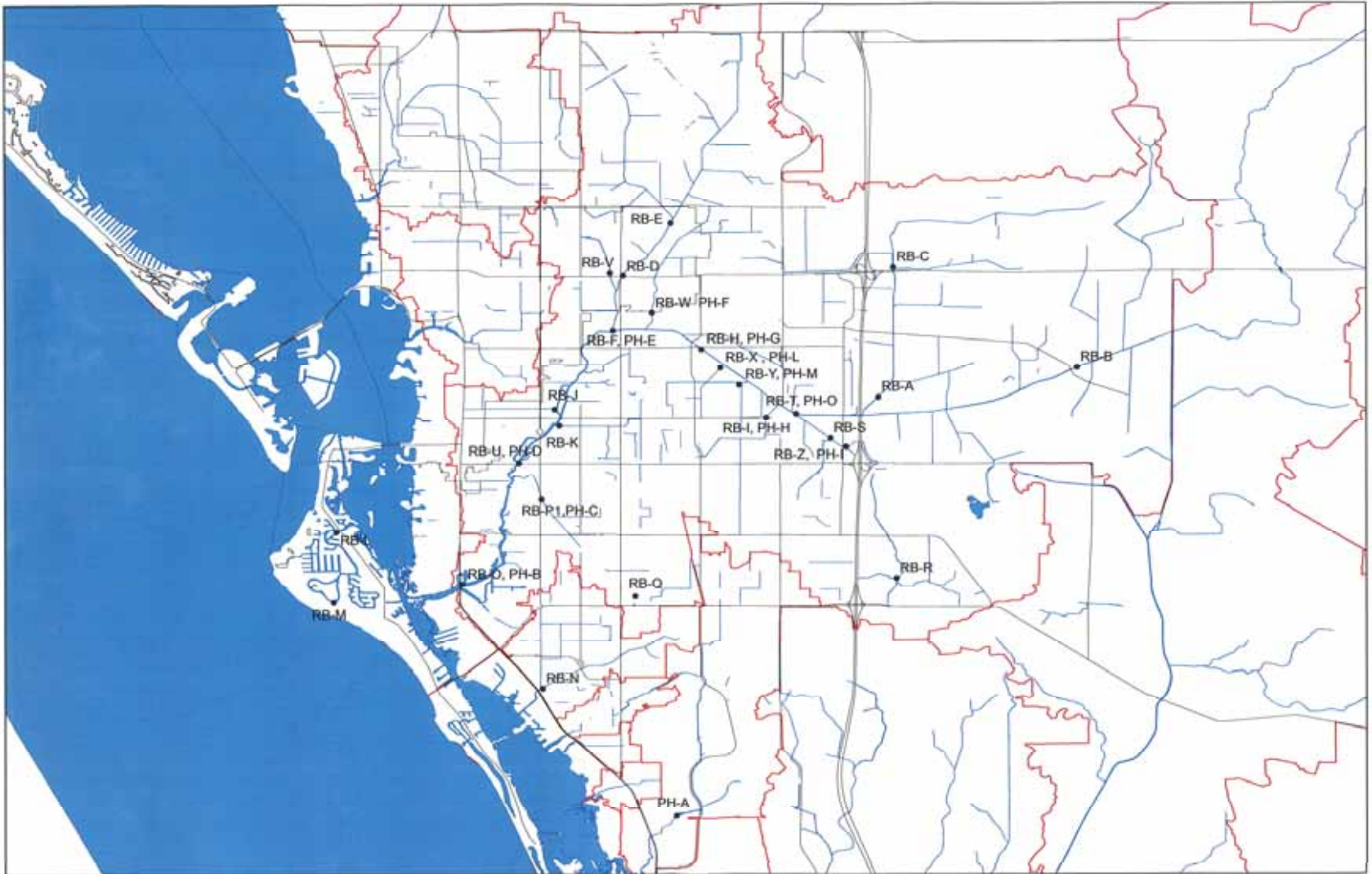
Sampling Design

- Sarasota County hasn't had an ambient creek sampling program since ~1995
- The current scheme, started as a "survey" of the watershed to assess what is there
- Stations scattered throughout the basin to identify "hotspots" and stream reaches in need of further work
- Monthly sampling began in March 2006

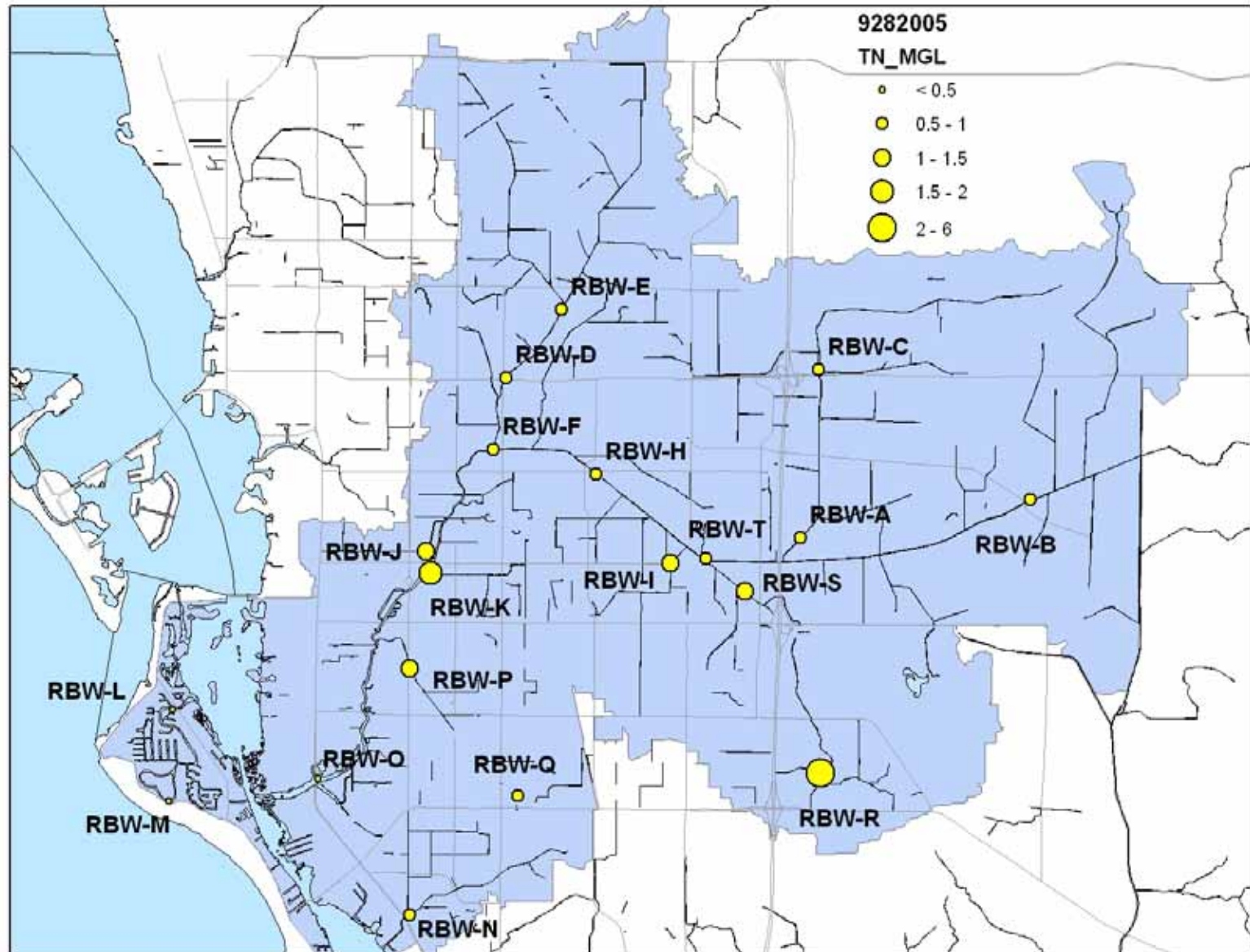
Roberts Bay Watershed 2004 Aerial Photograph



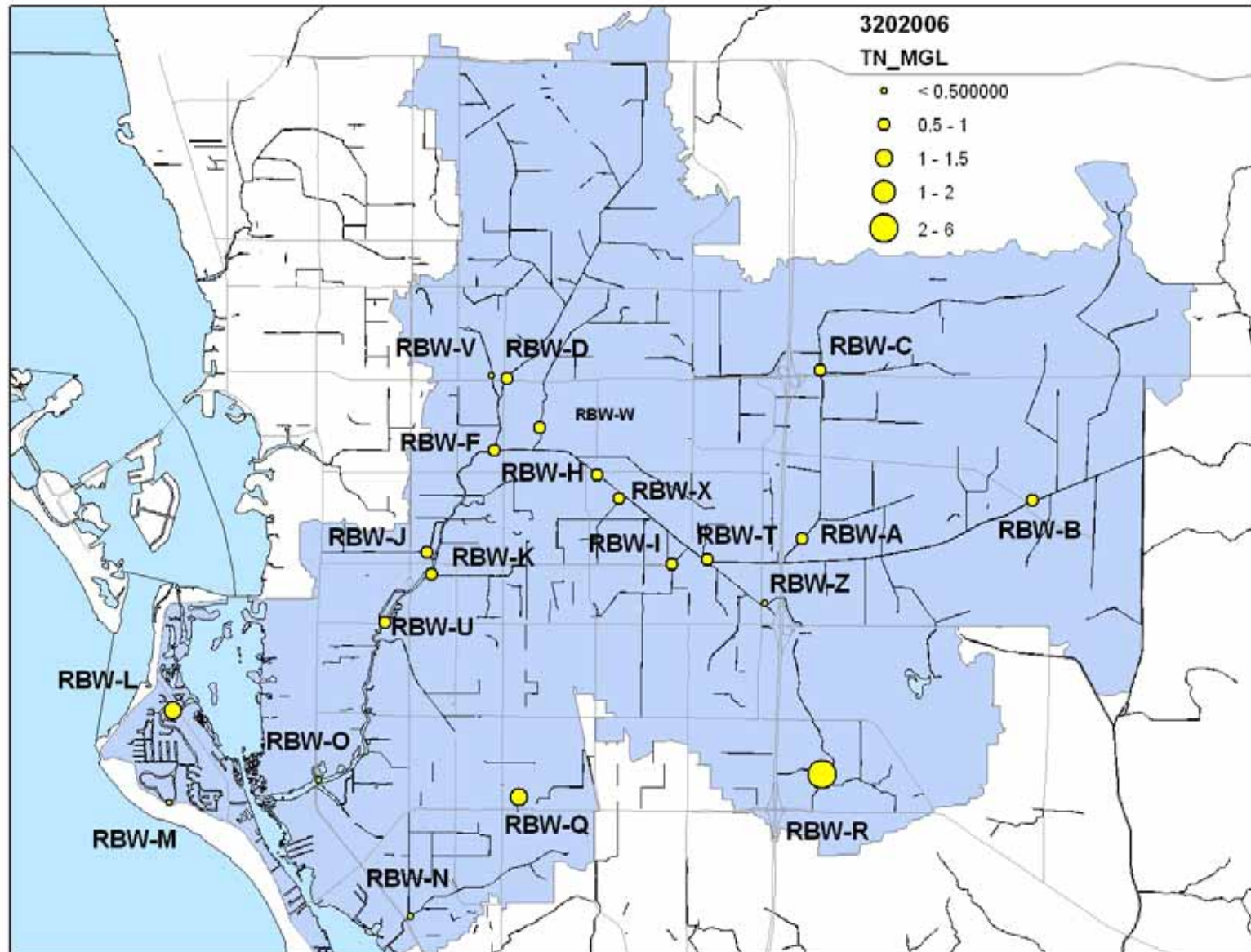
Watershed Sampling Stations



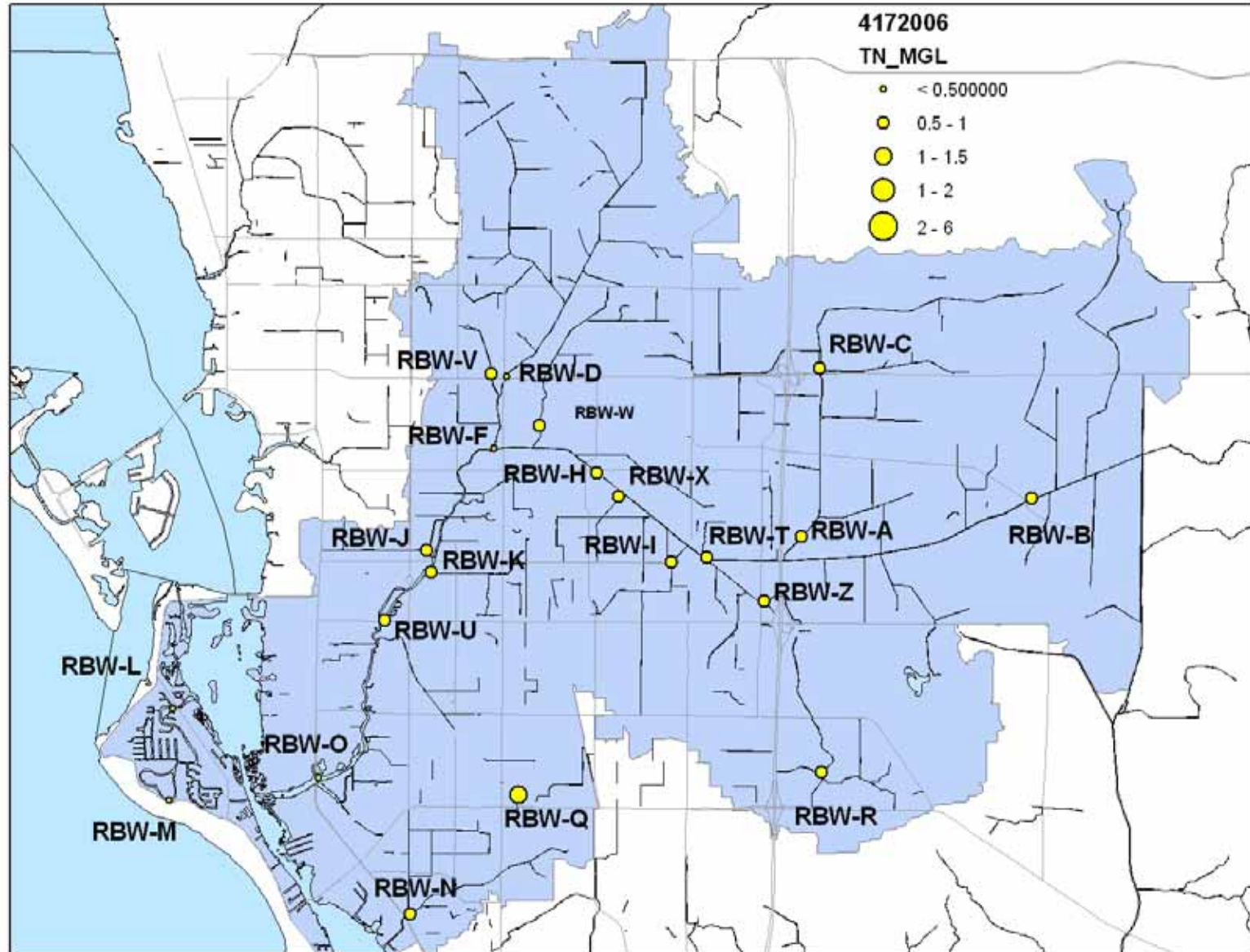
September 2005



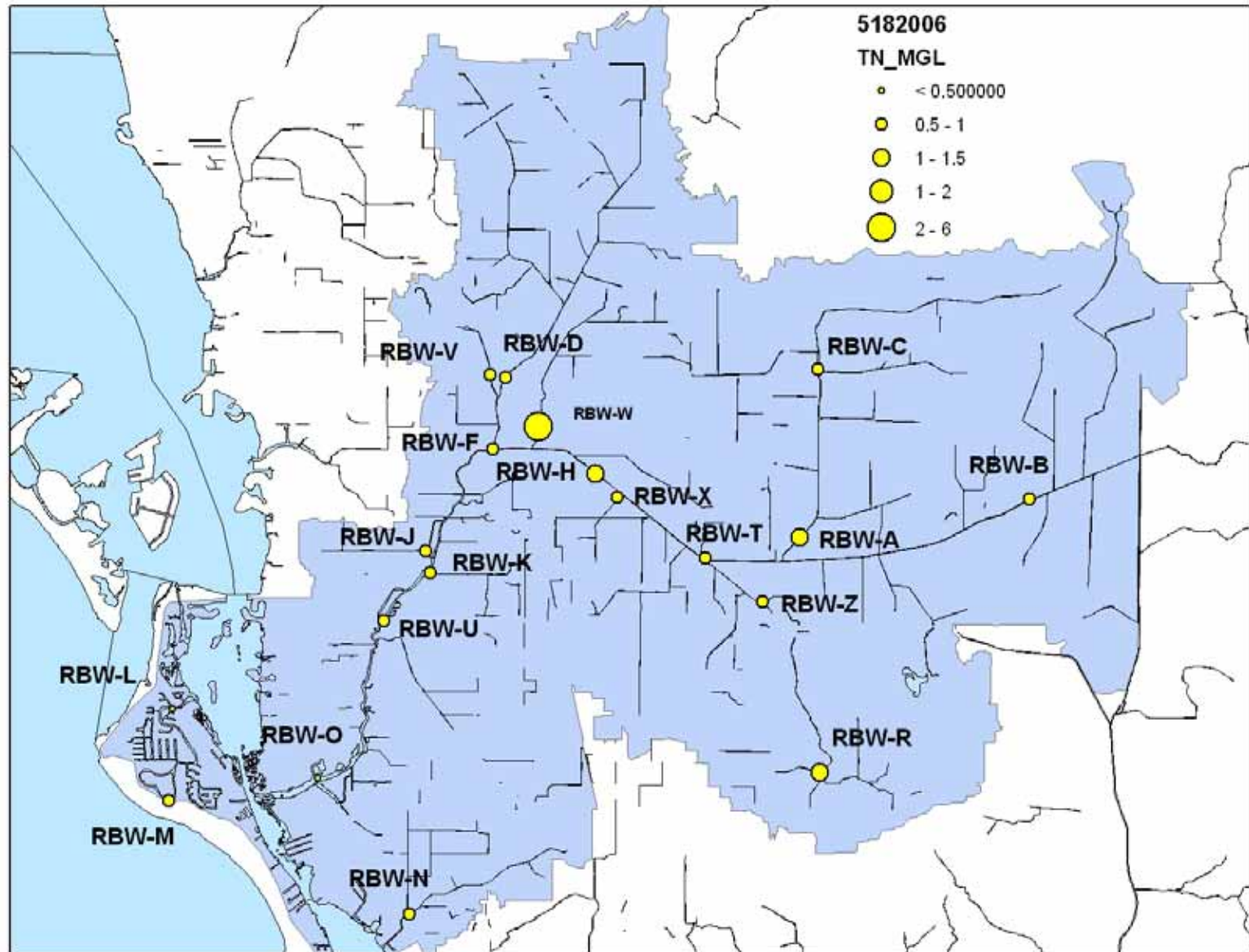
March 2006



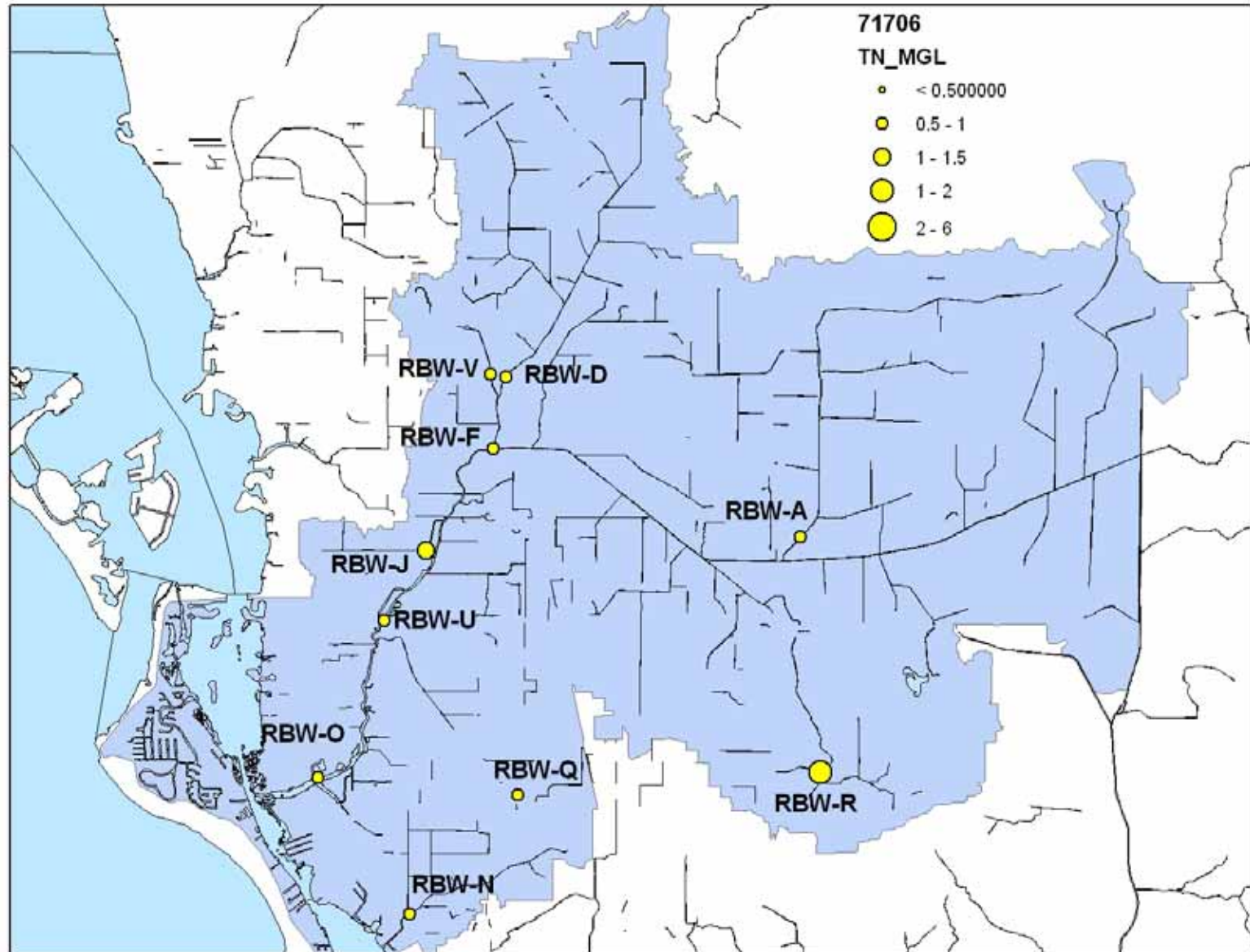
April 2006



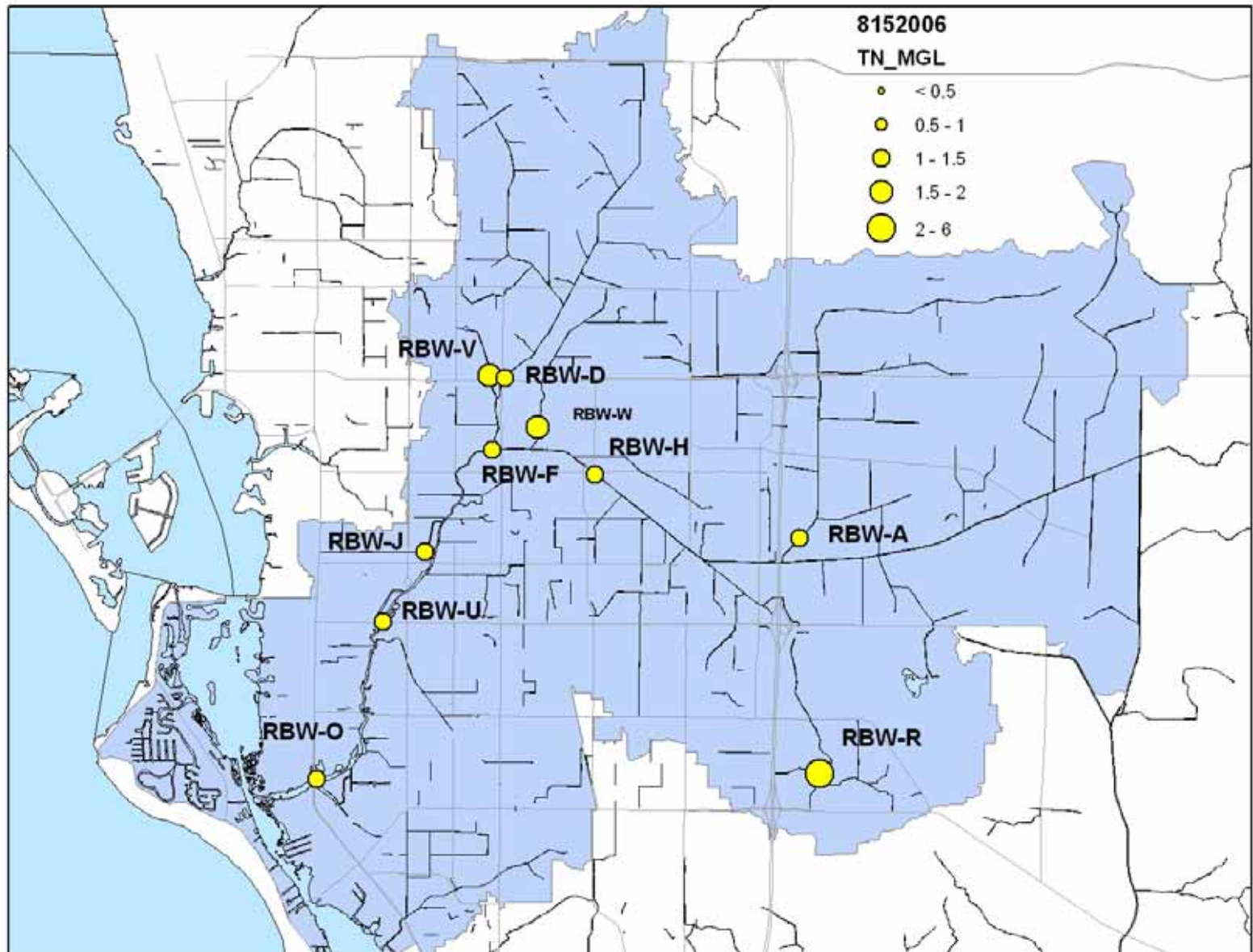
May 2006



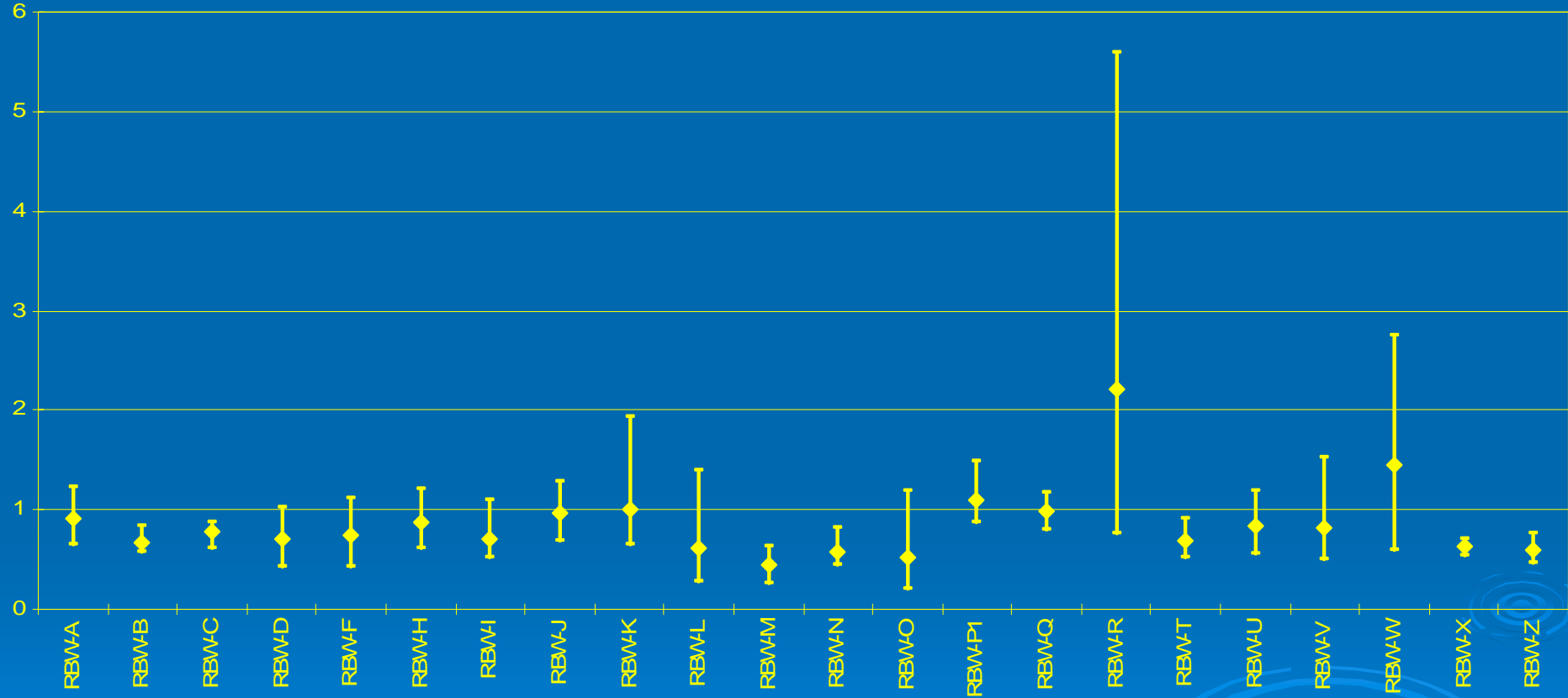
July 2006



August 2006



Summary of TN



What's next?

- We are able to identify “Hotspots”
- Flow in some form will be added to the sampling protocol to calculate load
- Available flow data from the County's ARMS station will become more accessible for load calculations
- In October 2006, sampling will return to previous levels
- ???