

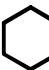
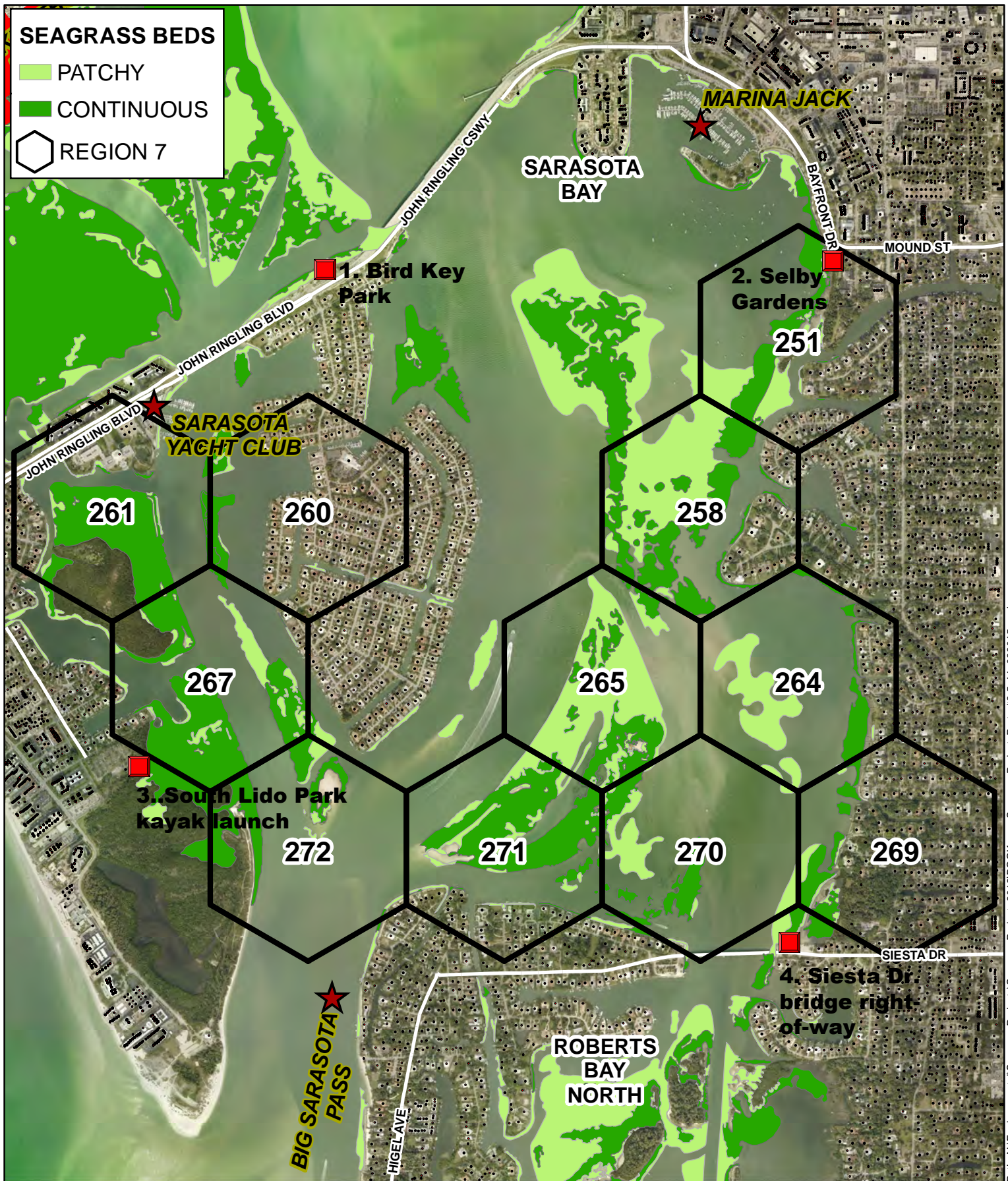


**SEAGRASS BEDS**

-  PATCHY
-  CONTINUOUS
-  REGION 7



Map published using ArcGIS 10.x by jsantama on Friday, April 03, 2015

Path: N:\Environmental\SeagrassProjects\SeagrassProject\_2012\BOOKmap\_SeagrassProject\_Portrait8.5x11\_033015.mxd



2015  
**SEAGRASS SURVEY**  
Seagrass: the lawn that doesn't need fertilizer.



This map is produced from Sarasota County GIS, and is representative information only. The County does not warrant, guarantee, or assume any responsibility for geographic information completeness and/or accuracy. This map should not be used as guide for navigation. Copyright © SCGIS 2015

## Hexagon Coordinate Table Region 7

REGION	GRID #	Latitude	Longitude	Latitude	Longitude
		Decimal Degrees (DD)		Degrees/Minutes/Seconds (DD/MM/SS)	
7	251	27.32515	-82.54213	27° 19' 30.534" N	82° 32' 31.662" W
	258	27.31894	-82.5461	27° 19' 8.197" N	82° 32' 45.956" W
	260*	27.31888	-82.5621	27° 19' 7.969" N	82° 33' 43.565" W
	261	27.31885	-82.5701	27° 19' 7.852" N	82° 34' 12.369" W
	264	27.31277	-82.54207	27° 18' 45.972" N	82° 32' 31.446" W
	265	27.31274	-82.55007	27° 18' 45.860" N	82° 33' 0.248" W
	267*	27.31267	-82.56607	27° 18' 45.630" N	82° 33' 57.854" W
	269*	27.3066	-82.53804	27° 18' 23.747" N	82° 32' 16.937" W
	270*	27.30657	-82.54604	27° 18' 23.635" N	82° 32' 45.738" W
	271	27.30653	-82.55404	27° 18' 23.522" N	82° 33' 14.539" W
	272	27.3065	-82.56204	27° 18' 23.407" N	82° 33' 43.340" W

### \*Access Points:

- 1) Bird Key Park/Point: John Ringling Causeway/FL – 798, Sarasota, FL 34236
  - North side of road, east side of bridge
  - Launch over seawall
- 2) Selby Gardens: 811 S. Palm Ave., Sarasota FL 34236
  - Located off of Mound St.
  - Access shoreline (bay) from native planting trail near lagoon (behind mansion)
- 3) South Lido County Park kayak launch: 190 Taft Dr., Sarasota, FL 34236
  - At end of Taft Rd., past kayak outfitters
  - Launch at shoreline
- 4) Siesta Dr. bridge right-of-way: Sarasota, FL 34239
  - North of road side, east of bridge
  - Launch over seawall