

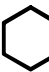
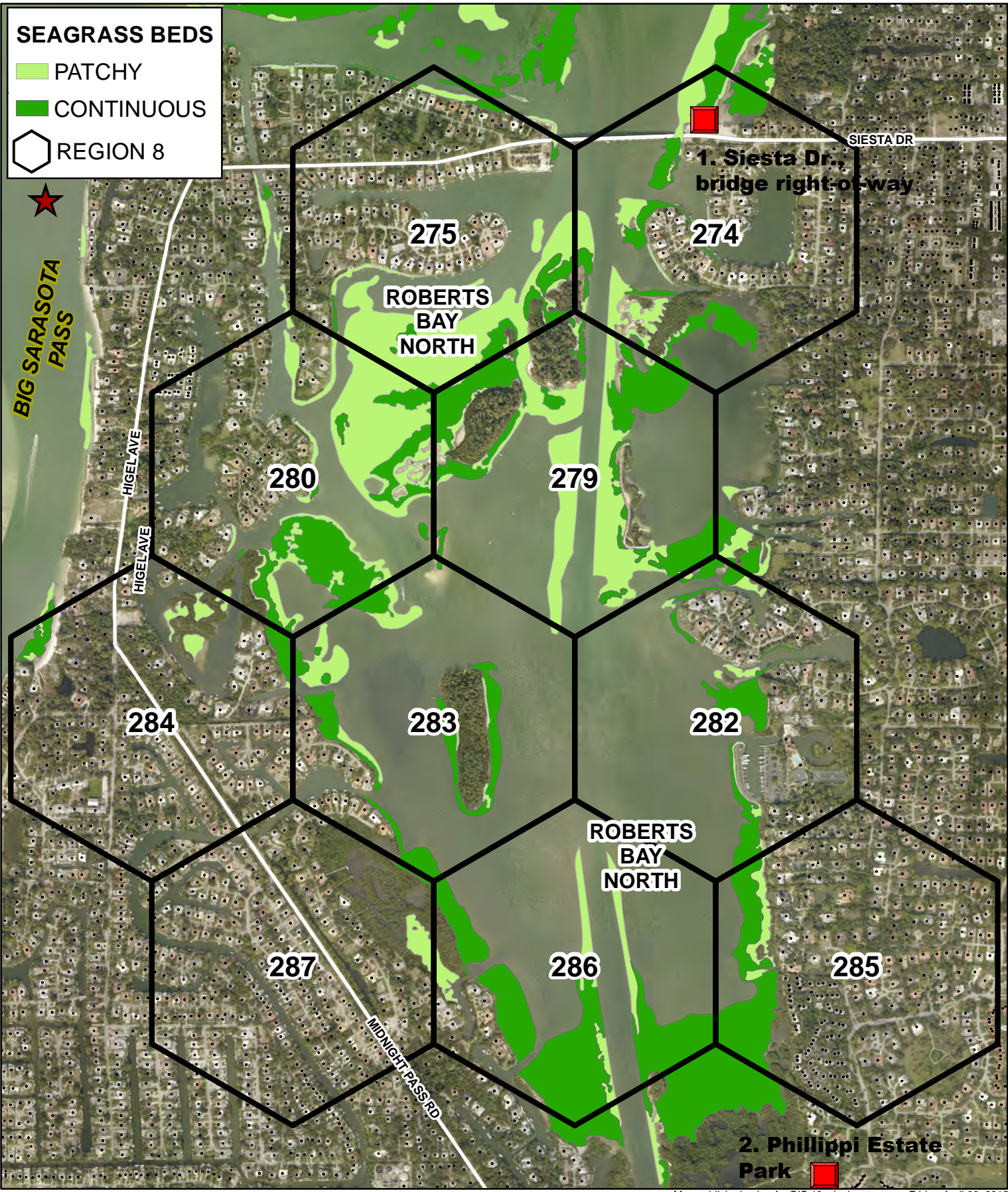


SEAGRASS BEDS

-  PATCHY
-  CONTINUOUS
-  REGION 8


BIG SARASOTA PASS



**1. Siesta Dr.,
bridge right-of-way**

**2. Phillippi Estate
Park**

Map published using ArcGIS 10.x by jsantama on Friday, April 03, 2015



2015
SEAGRASS SURVEY
Seagrass: the lawn that doesn't need fertilizer.


Sarasota County
scgov.net | 941.861.5000

This map is produced from Sarasota County GIS, and is representative information only. The County does not warrant, guarantee, or assume any responsibility for geographic information completeness and/or accuracy. This map should not be used as guide for navigation. Copyright © SCGIS 2015

Path: N:\Environmental\SeagrassProjects\SeagrassProject_2012\BOOKmap_SeagrassProject_Porrait8.5x11_033015.mxd

Hexagon Coordinate Table Region 8

REGION	GRID #	Latitude	Longitude	Latitude	Longitude
		Decimal Degrees (DD)		Degrees/Minutes/Seconds (DD/MM/SS)	
8	274*	27.30039	-82.54201	27° 18' 1.410" N	82° 32' 31.229" W
	275	27.30036	-82.55001	27° 18' 1.298" N	82° 33' 0.029" W
	279	27.29419	-82.54598	27° 17' 39.073" N	82° 32' 45.520" W
	280	27.29416	-82.55398	27° 17' 38.960" N	82° 33' 14.318" W
	282	27.28801	-82.54195	27° 17' 16.848" N	82° 32' 31.013" W
	283	27.28798	-82.54995	27° 17' 16.736" N	82° 32' 59.809" W
	284	27.28795	-82.55795	27° 17' 16.622" N	82° 33' 28.605" W
	285	27.28184	-82.53792	27° 16' 54.623" N	82° 32' 16.507" W
	286*	27.28181	-82.54592	27° 16' 54.511" N	82° 32' 45.302" W
	287	27.28178	-82.55392	27° 16' 54.398" N	82° 33' 14.097" W

***Access Points:**

- 1) Siesta Dr. bridge right-of-way: Sarasota, FL 34239
 - North of road side, east of bridge
 - Launch over seawall
- 2) Phillippi Estate Park: 5500 S. Tamiami Trl., Sarasota, FL 34231
 - Park at gazebo
 - Kayak/canoe launch 0.06 miles from parking lot