

10 GUIDELINES FOR CLIMATE-FRIENDLY LANDSCAPING

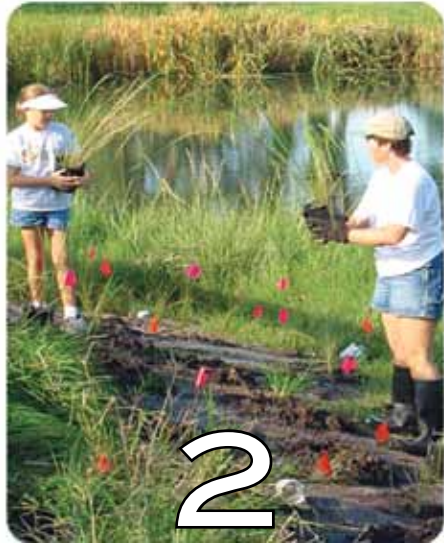


1

Minimize Mowing

Lawns require carbon and nitrogen intensive maintenance.

- Expand plant beds
- Use groundcovers
- Use electric or manual lawn equipment



2

Incorporate Native Plants

Native plants are adapted to local conditions and need less carbon and nitrogen intensive maintenance.



3

Reduce Hardened Surfaces

Driveways and sidewalks heat up quickly and radiate that heat. Break-up these heat islands by reducing hardened surfaces with landscaped beds and trees.



4

Conserve Energy by Conserving Water

It takes energy to pump, filter and distribute water. Capture and reuse rainwater with:

- Rain barrels
- Rain gardens
- Green roofs



5

Minimize/Eliminate Fertilizers & Pesticides

Reduce emissions associated with the use of chemicals in your yard.



6

Reuse Yard Waste

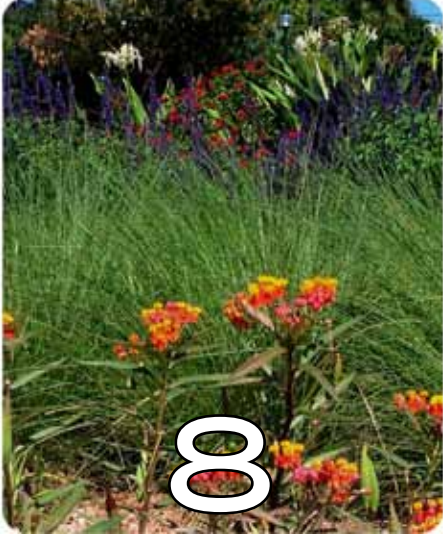
Recycle carbon and nitrogen back into the soil naturally.



7

Increase Tree Canopy

Keep mature trees and plant new trees to decrease your carbon footprint.



8

Create Biodiversity

Plants absorb more carbon and nitrogen than mowed lawns. Diversity plantings also attract birds and butterflies!



9

Naturalize the Shoreline

Plant native vegetation to buffer against storm surge and rising sea levels. Remove seawalls. Create low maintenance buffer zones along all shorelines.



10

Engage Your Neighborhood

One person can make a difference. But more people can make an even bigger difference!

FYI DID YOU KNOW?

According to EPA-

- A power push mower emits as much pollution in an hour as 11 cars
- A riding mower emits as much pollution in an hour as 34 cars
- Native plants work much better than traditional mowed grass as a carbon sink due to their extensive root systems and increased ability to retain and store water
- The few ounces spilled during each refueling of lawn and garden equipment adds up to 17,000,000 gallons of gasoline nationwide, every summer
- Annual U.S. nitrous oxide emissions began rising sharply from 2003 to 2006, largely as a result of increases in the application of synthetic fertilizers (DOE EIA)
- It requires 22,159 Btu of energy to produce one pound of nitrogen (USDA). That's equivalent to 111 tons of CO₂ or emissions from 20 cars
- It requires about 180,000 Btu of energy to produce one pound of insecticide or herbicide (USDA). That's equivalent to 900 tons of CO₂ or emissions from 165 cars

- Sarasota Bay Estuary Program**
www.sarasotabay.org 941.955.8085
- Sarasota County**
www.scgov.net 941.861.5000
www.scgov.net/sustainability
- Florida Native Plant Society**
www.fnps.org 321.271.6702
- Association of Native Plant Nurseries**
www.afnn.org 877.352.2366
- Environmental Protection Agency (EPA)**
www.epa.org 800.424.8802
www.epa.gov/greenacres
- US Climate Science Program**
www.climatescience.gov
- National Oceanic and Atmospheric Administration**
www.noaa.gov 202.482.6090



A BETTER WAY TO LANDSCAPE

Conventional landscapes require energy intensive, polluting, and expensive maintenance practices through demands for irrigation, fertilizers and frequent mowing.

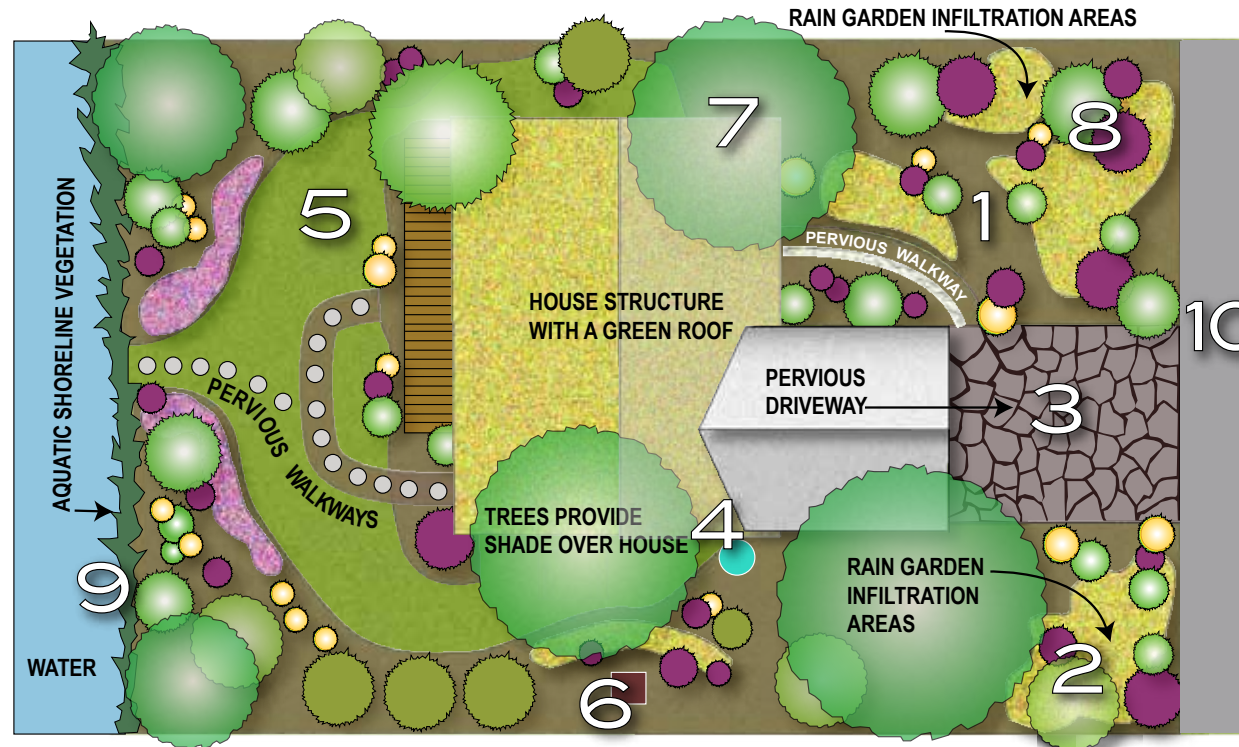
When we reduce our carbon dioxide and nitrous oxide emissions we are preserving the vitality of the communities that we appreciate today for generations of tomorrow. Landscaping for climate change strategies can help to offset the emissions footprint of our everyday activities.

Reduce Greenhouse Gases such as Carbon Dioxide (CO₂) & Nitrous Oxide (N₂O)

Trees and other vegetation benefit the climate in many ways: human comfort, energy conservation, cooling urban climates, and reducing air pollution.

Using Climate Friendly Landscape Guidelines reduce the demand for non-renewable resources and improves the water and air quality. Within this brochure are steps you can take to make your yard climate friendly.

CLIMATE FRIENDLY LANDSCAPE GUIDELINES



- | | | |
|------------------------------------------------|------------------------------|-----------------------|
| 1. Minimize Mowing | 6. Reuse Yard Waste | Compost Bin |
| 2. Incorporate Native Plants | 7. Increase Tree Canopy | Rain Barrel / Cistern |
| 3. Reduce Hardened Surfaces | 8. Create Biodiversity | |
| 4. Conserve Energy by Conserving Water | 9. Naturalize the Shoreline | |
| 5. Minimize/Eliminate Fertilizers & Pesticides | 10. Engage Your Neighborhood | |

LANDSCAPING TO SAVE ENERGY

Making a Difference for Tomorrow



Climate Friendly Landscaping