

New Vision for Action

Sarasota Bay's continued recovery depends on all of us. With the help of informed citizens, our community can envision a future that looks like this:

- Water quality continues to improve throughout the Bay, with a resurgence of sea grass, marine life and birds.
- Wetlands, both freshwater and tidal, are restored.
- Residents improve their yards, planting native habitats for birds and other wildlife.
- Wastewater rarely enters the bay; septic tanks are a thing of the past.
- Recreational and economic opportunities abound.

Want to Learn More?

Here are just a few helpful resources:

Sarasota Bay Estuary Program
www.sarasotabay.org

US Environmental Protection Agency
www.epa.gov and www.estuaries.gov

National Oceanic and Atmospheric Administration www.noaa.gov

US Fish and Wildlife Service www.fws.gov

Sarasota Bay Estuary Program
111 South Orange Avenue,
Room 200W
Sarasota, FL 34236
Ph: 941-955-8085
Fax: 941-955-8081
www.sarasotabay.org



Funding Partners:
US Environmental Protection Agency
FL Department of Environmental Protection
Southwest Florida Water Management District
Sarasota County
Manatee County
City of Sarasota
City of Bradenton
Town of Longboat Key

Cover Photograph – Lou DiVita, Photographic Art and Restoration
941.302.2660 www.rsimaginc.com

Design – Chebacco Design & Communications
941.753.4044 www.chebaccodesign.com

Printed 10/28/04 5000

PLACE
STAMP
HERE

Sarasota Bay Estuary Program
111 South Orange Avenue
Room 200W
Sarasota, FL 34236

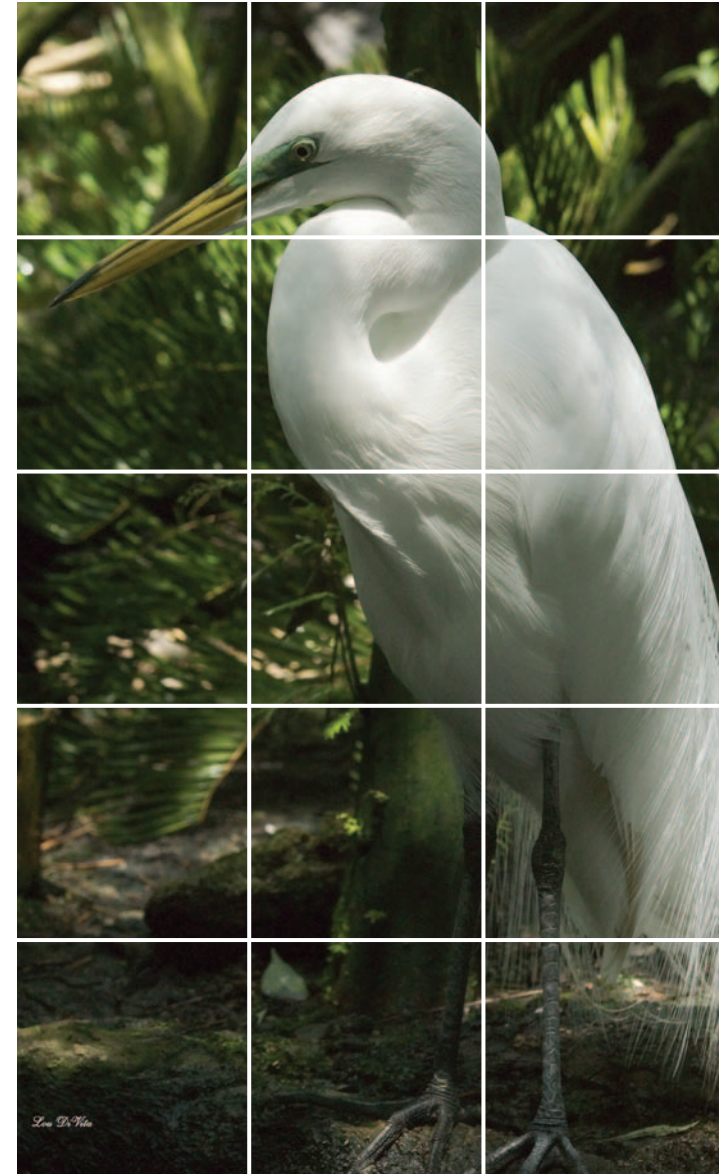


SARASOTA BAY
ESTUARY PROGRAM
Protecting Our Water Heritage



Working to Protect and Preserve Sarasota Bay

The Sarasota Bay Estuary Program is dedicated to improving and protecting the area's greatest and most important natural asset – Sarasota Bay



Lou DiVita

Estuary of National Significance

Es-tu-ar-y (es-choo-air-ee): A place where fresh water and salt water meet. Harbors, bays, lagoons, creeks and inlets are examples of estuaries.

Sarasota Bay is one of 28 estuaries in the United States named by the US Congress as an "estuary of national significance." Established in 1989, the Sarasota Bay Estuary Program is committed to restoring, improving and protecting our Bay.

Sarasota Bay is a vast coastal system that extends from Anna Maria Sound to Venice Inlet, encompassing the barrier islands, tributaries and uplands in the local watershed.

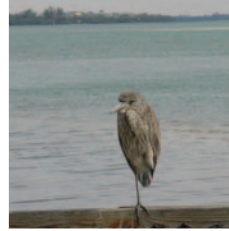


City of Sarasota by the Bay



More Than a Decade of Progress

Bay Projects – Protecting a Fragile Ecosystem



Juvenile Night Heron, Leffis Key



Anna Maria Island dunes

The Sarasota Bay Estuary Program spearheads and carries out projects that improve water quality, increase natural habitats and enhance the natural resources of the area for use and enjoyment by the public.



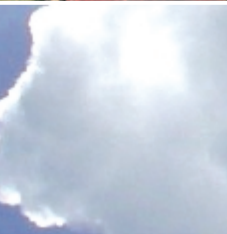
Intercoastal Waterway Bird Rookery



School reef ball project



Environmental stewards



Restoring oyster habitats



Today, Sarasota Bay is much different than it was 14 years ago when the Sarasota Bay Estuary Program first started. What are some of the successes we can celebrate?

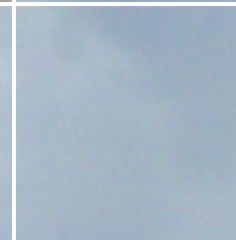
- Water quality has improved in the Bay
- Seagrass beds are recovering
- Wetlands and artificial reefs are creating new habitat for marine life
- Recreational fishing is excellent
- The community has upgraded wastewater treatment plants and initiated storm-water run-off prevention projects



Florida Friendly Landscaping



Certified Florida Yard



Durante Park field trip